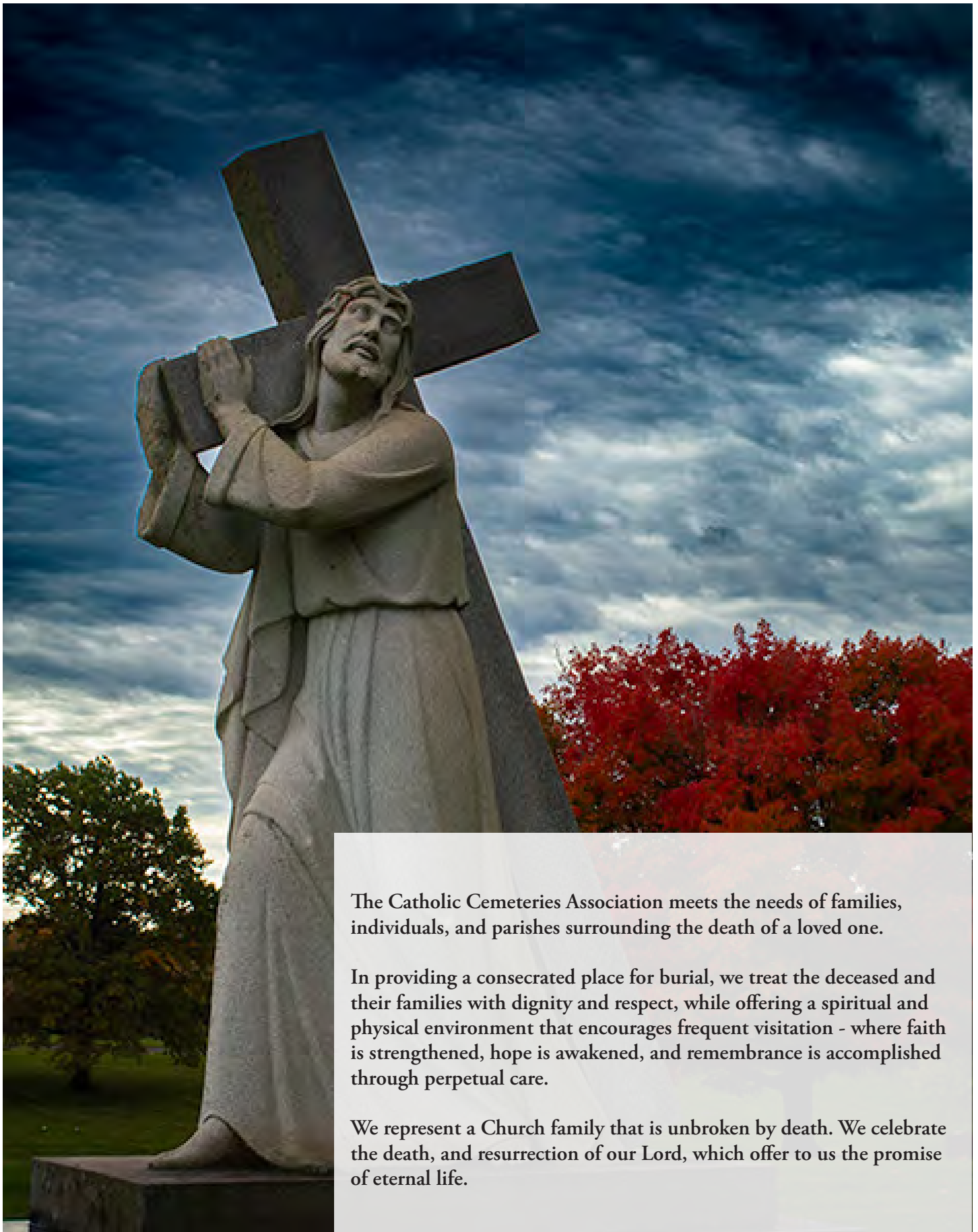


Information Guide



ALL SAINTS CEMETERY
CATHOLIC CEMETERIES ASSOCIATION
Faith, Hope, and Remembrance



The Catholic Cemeteries Association meets the needs of families, individuals, and parishes surrounding the death of a loved one.

In providing a consecrated place for burial, we treat the deceased and their families with dignity and respect, while offering a spiritual and physical environment that encourages frequent visitation - where faith is strengthened, hope is awakened, and remembrance is accomplished through perpetual care.

We represent a Church family that is unbroken by death. We celebrate the death, and resurrection of our Lord, which offer to us the promise of eternal life.



From the Director

Welcome to Catholic Cemeteries!

Thank you for choosing the CCA. We are truly honored to care for you and your family during your time of need. Whether you're coping with a recent loss or planning for the future – we are here for you.

The CCA manages and maintains 20 cemeteries across the Diocese of Cleveland. Our properties include over 1,900 acres of land, 35 miles of roads, and 60 buildings. We work very hard to maintain our cemeteries, and are constantly improving our grounds by paving roads, planting trees, opening new burial areas, upgrading facilities, and adding streams and ponds. We are self-sustaining and the income generated from all CCA products is invested back into your Catholic cemeteries. This income ensures that each of these improvements can be made.



We make all of our decisions with you, our families, in mind and strive to make our cemeteries places of peaceful, sacred, and prayerful remembrance. The Catholic Cemeteries Association understands the responsibility placed on us to care for families and their dearly departed loved ones. While nothing can take away the pain of losing someone you love, we hope to provide families with the support and guidance they need during life's most difficult times.

We look forward to serving your family and our Catholic community for years to come.


God Bless,


Andrej N. Lah
Director

Stay Connected With Catholic Cemeteries

 Follow catholiccemeteriesassociation on Facebook

 Follow clecatholiccems on Instagram

 Subscribe to our channel on YouTube

 Sign up for our e-newsletter at clecem.org

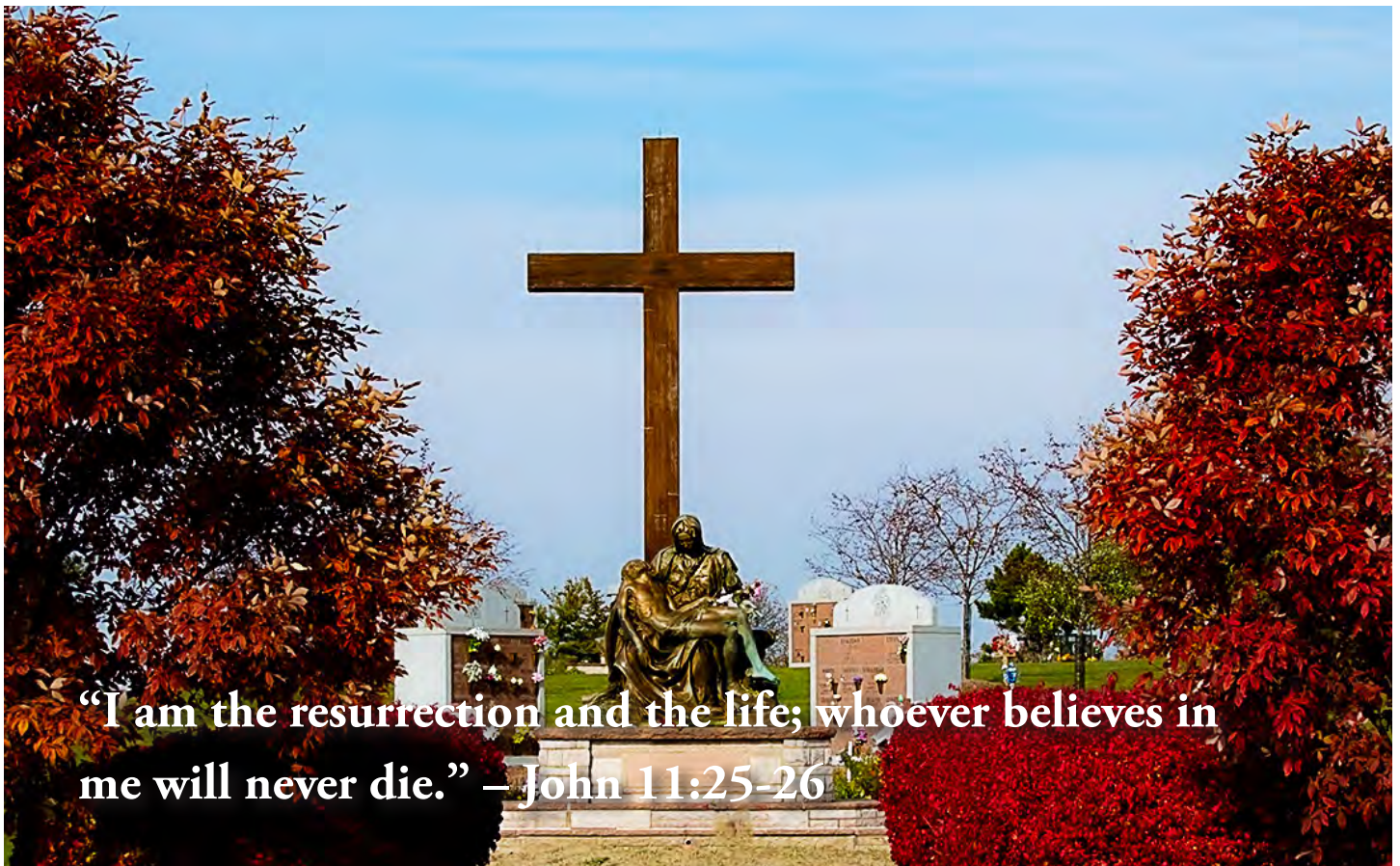


The Catholic Burial Tradition

Many people wonder what makes a Catholic cemetery different from any other cemetery. In short, Catholic cemetery grounds are consecrated. These sacred grounds are an extension of the Catholic Church. They ensure that those who are together in life are kept together in death.

Catholic cemeteries are reverent and prayerful places. They are adorned with special Christian symbols, monuments, and structures that make visitation a holy and serene experience. Choosing to be buried in a Catholic cemetery is a way of remaining surrounded by the faith and members of the Church even in death. Just like the other sacraments we receive throughout our life, such as baptism, first communion, and marriage, God is calling to be present with us at the completion of our life's journey.

Most importantly, Catholic cemeteries are reminders of the promise of the resurrection. We hear about this promise in the Gospel of John:





Why Choose the CCA?

Generational

The CCA has been serving Catholic families throughout the Diocese of Cleveland since the mid-1800s.

Sacred

Our consecrated grounds ensure that loved ones are buried in accordance with the Catholic church.

Knowledgeable

Our caring staff will help you and your family with support and guidance as you find a place to cherish memories for generations to come.

Compassionate

The Catholic Cemeteries Association is committed to ministering and assisting families before, during and after the death of a loved one.

Connected

We are proud to be part of the Diocese of Cleveland and aim to make connections within the Catholic community and beyond.

Innovative

The CCA is dedicated to constant improvement and enhancement while staying up to date with the latest technologies.



Full Body Burial

Full body burials, also known as “casket burials,” are the most traditional form of burial. Casket burials involve burying the deceased person’s entire body in the ground or in an above-ground structure. This method has been practiced for centuries and holds religious significance for the Catholic community. This burial option provides a physical resting place for loved ones and allows for traditional funeral rituals and mourning practices. There are several burial options available to you.



Graves



Community Mausoleum



Community Mausoleum



Family Mausoleum



Community Sarcophagi



Family Sarcophagi





Cremation Burial

Why We Bury Cremated Remains

Burying cremated remains imitates the burial and resurrection of Jesus Christ. The act of burial shows the same respect shown a full body burial. Burying cremated remains ensures the memory of the deceased lives on in a safe and sacred place. Finally, burial prevents the possible loss, damage, or theft of the remains.

Graves



Columbarium



Niche Bench



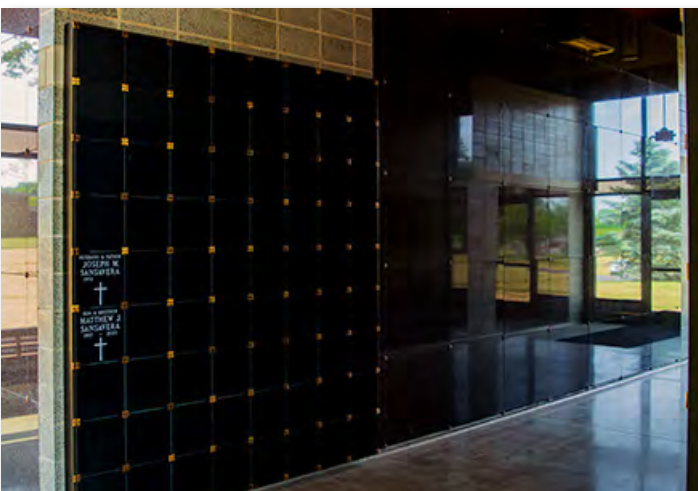
Niche Pedestal



Niche Alcove



Thin Niches



Community Mausoleum





Outer Burial Containers, Urns & Vaults

Our pressure tested outer burial containers protect the casket or urn from the weight of the earth, and preserve the appearance and safety of the gravesite. Each outer burial container has unique qualities and features. Unsealed outer burial containers are available for both cremation and full body burial. Please ask your Family Service Representative for more details.

Basilica[®]

Cremation Series



Cultured Marble Ruby Urn



Cultured Marble White Urn



Cultured Marble Jade Urn



Cultured Marble Gold Urn



Cultured Marble Black Urn



Cultured Marble Brown Urn



Cultured Marble Blue Urn



Cultured Marble Pink Urn



Cultured Marble Veteran Urn



Tall Cremation Chest



Small Cremation Chest

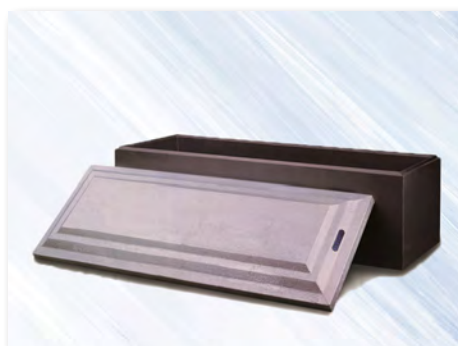
Basilica® Cement OBC /Vaults



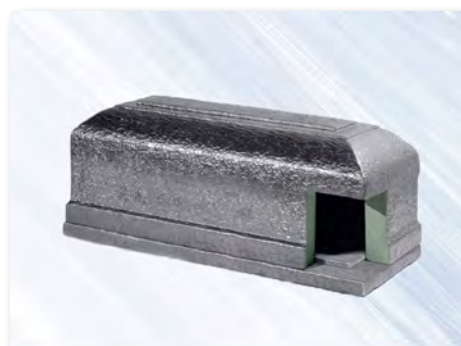
Basilica® Cathedral



Basilica® Arimathea



Basilica® Gethsemane



Basilica® Sepulcher

Basilica® Steel Vaults



Shepherd VII



Shepherd VI



Shepherd V



Shepherd IV

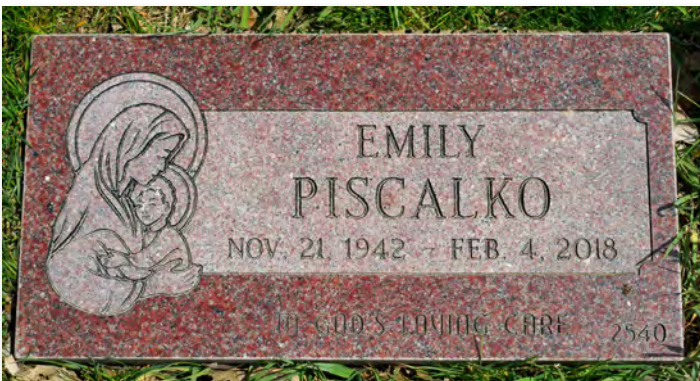


Shepherd III



Markers & Monuments

Our experienced Family Service Representatives are dedicated to working with you to help design a custom memorial that truly encapsulates the spirit of your loved one. Entrust us with your memories, and together, we will create a timeless memorial that honors their legacy with the dignity, respect, and artistry it deserves. *Restrictions on memorialization options may apply.



Flush Marker



Pillow Marker



Slant Monument



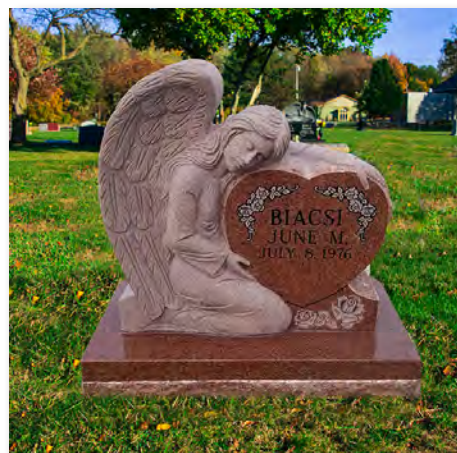
Monument



Monument



Custom Monument





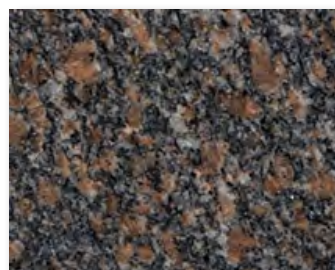
Granite Colors



Basilica® Pink



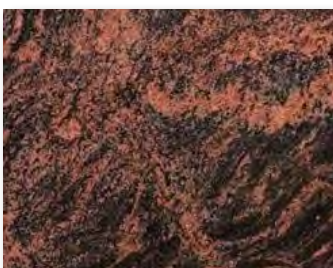
Basilica® Paradiso



Basilica® Brown



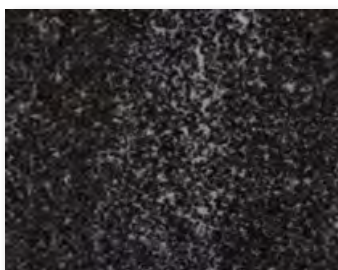
Basilica® Red



Basilica® Aurora Red



Basilica® Gray



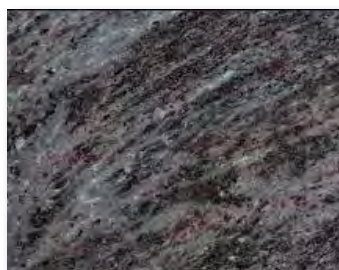
Basilica® Black Mist



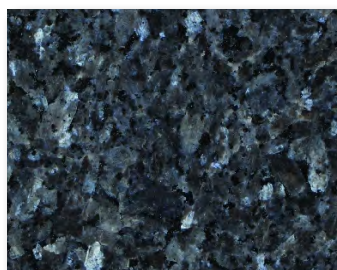
Basilica® Jet Black



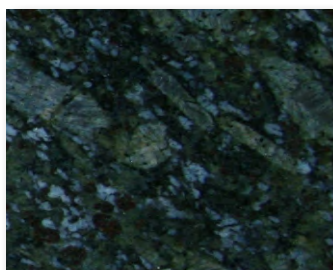
Basilica® Midnight Black



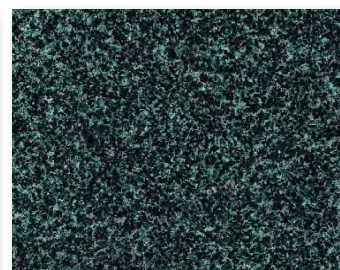
Basilica® Bahama Blue



Basilica® Blue Pearl



Basilica® Butterfly Blue



Basilica® Green



Please scan the QR code to learn more about our headstones or visit our website.



Memorialization



Crypt & Niche Emblems

Our wide variety of crypt and niche emblems allow you to express your faith, devotion and service with grace and dignity.

**Some restrictions apply.*



Crypt & Niche Portraits

Choose a treasured photograph to be reproduced in either full-color or black and white crypt or niche portrait.

**Some restrictions may apply.*



Crypt & Niche Bouquets

Seasonal artificial bouquets are available for your loved one's crypt or niche. Visit our website for more details.



Artificial Wreaths

Artificial wreaths are available for graves during the winter season (November 1 - March 15). Visit our website for more details.



Easter/Mother's Day Arrangements

Celebrate spring holidays with elegant Mother's Day and Easter arrangements from our cemeteries. Visit our website for more details.



Fresh Flowers

Fresh flowers are available during the growing season (March 16 - October 31). Visit our website for more details.

Please scan the QR code to learn more about our decorations or visit our website.





Bereavement Support Groups & Special Events

Monthly Grief Support Groups

We offer a comfortable, private, and encouraging environment where you are free to explore your grief and all you are feeling. Meetings are open discussion, surrounding a monthly topic or whatever is on your heart. Come and be in the presence of those who understand. Our monthly support group meets every 3rd Sunday of each month - 4th Sunday if the 3rd Sunday is a holiday - from 3 pm to 4 pm. Visit our website for dates and locations.

Special Events

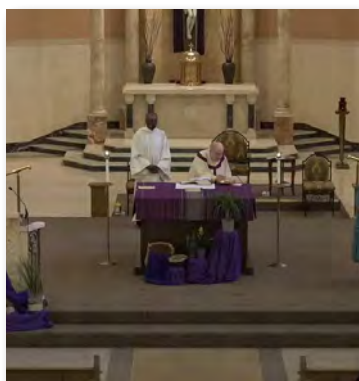
The Catholic Cemeteries Association welcomes you to join any of our ongoing or seasonal events.

The **One-Year Anniversary Mass** is celebrated annually near the feast of St. Joseph, our model and intercessor for the grace of a peaceful passage from this life to our eternal home in Heaven.

Memorial Day Mass honors those who gave their lives serving God and country.

In October, the month of the Most Holy Rosary, we pray for your loved ones with a half-mile walking Rosary at the **Walk to Remember**.

Cemetery Sunday Mass, held in November, is a spiritual way to honor family members who have passed, and provides families with a special opportunity to visit the graves of their dearly departed loved ones.



One Year Anniversary Mass



Memorial Day Mass



Walk to Remember



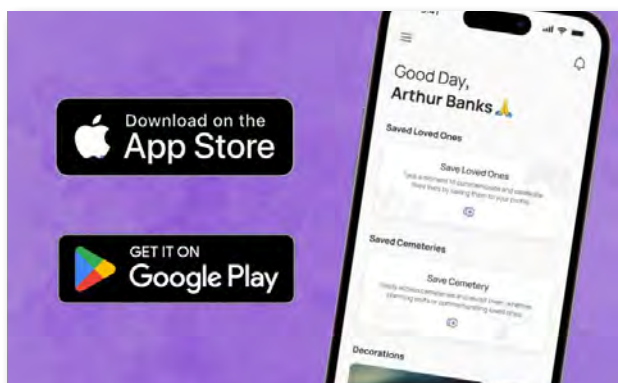
Cemetery Sunday Mass



Please scan the QR code to learn more about our support groups and events or visit our website.



Stay Connected



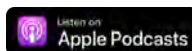
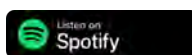
The Cemmansys App - Discover, Navigate, Remember

The Cemmansys app offers GPS navigation directly to your loved one's gravesite. You can also save their information for future visits and bookmark cemeteries for easy access. Available on both iOS and Android devices.



Our Podcast, CCAirwaves

CCAirwaves is the official podcast of the Catholic Cemeteries Association! We provide informational and inspirational segments that will help you work through your grief in a healthy way, learn more about our Catholic faith, and much more.



Look for CCAirwaves on Spotify, Apple Podcasts, or wherever you get your podcasts.



Read Our Blog!

The Catholic Cemeteries Association's mission is to meet the needs of families, individuals, and parishes surrounding the death of a loved one. To reflect our mission, we started a blog that focuses on strengthening faith, awakening hope, and remembering those we have lost.

Visit any time at clevelandcatholiccemeteries.wordpress.com.

Please scan the QR code to learn more about our app, podcast, and blog.





Place of Interment Pricing

Single Grave Prices

Some lawn level marker graves may be converted to a monument lot. Certain fees apply. Please ask for details.

Section 2 - \$2,575

Section 3 - \$1,720

Section 5 - \$1,850

Section 8 - \$1,720

Section 16 - \$2,310

Section 17 - \$1,850, \$2,310

Section 18C - **NEW** cremation grave packages are available!

Our Lady of the Lake Pavilion

Single Niche \$3,600 to \$4,800

Double Niche \$7,800 to \$10,200

Free Standing Single Niche - \$4,200

Mausoleums & Columbariums

Immaculate Heart Mausoleum

Outside Single Crypt -

\$13,800 to \$19,800

Inside Single Crypt -

\$15,600 to \$21,600

Inside Double Crypt -

\$26,400 to \$33,600

Outside Double Niche -

\$7,200 to \$12,000

Inside Single Thin Niche -

\$3,600 to \$4,800

Inside Double Niche -

\$9,000 to \$13,800

Nativity of the Blessed Virgin Mary Mausoleum

Outside Single Niche - \$2,310 to \$3,170

Outside Double Niche -

\$3,565 to \$4,690

Thin Niche - \$2,840 to \$4,300

Four Evangelists Mausoleum Addition

Outside Single Crypt - \$7,855 to \$8,120

Outside Double Crypt -

\$10,230 to \$11,220

Inside Double Crypt -

\$14,060 to \$15,600

Outside Single Niche - \$2,220 to \$2,575

Inside Single Niche - \$2,575 to \$3,565

Inside Double Niche - \$5,020 to \$7,855

Section 2 - St. Paul Columbarium

Single Niche - \$3,300

Section 2 - St. John the Baptist

Columbarium

Single Niche - \$3,300

Double Niche - \$7,130

Section 13 - St. Francis of Assisi

Columbarium

Single Niche \$3,600

Section 14 St. Joseph Columbarium

Single Niche - \$2,180

Section 15

Outside Single Crypt - \$14,190

Section 16 Assumption Columbarium

East & West

Single Niche - \$3,300

Double Niche - \$7,130

Section 30 - Our Lady Queen of

Heaven Columbarium

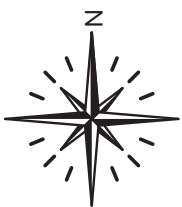
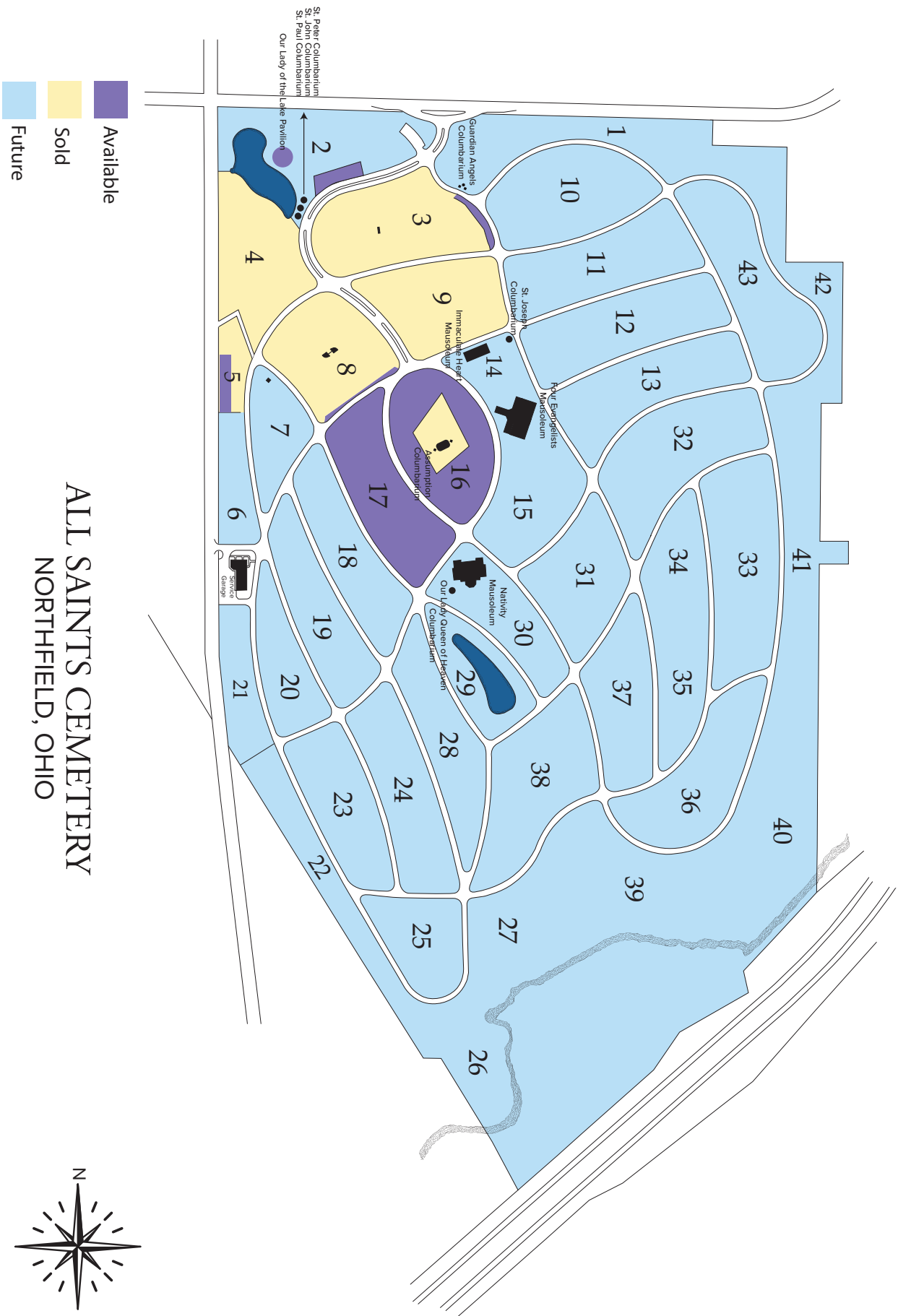
Single Niche - \$2,445

The Association will assess a 15% non-refundable charge on the sale of each place of interment and option. These funds will be placed into the Perpetual Care Trust for the sole purpose of the continuing care of the Association's cemeteries.

Additional charges may apply. Please speak to a Family Service Representative for information.

Prices Subject To Change ~ Interest Free Financing Available

Effective January 2026



All Saints Cemetery
480 W. Highland Road
Northfield
Extension 5

Holy Cross Cemetery
14609 Brookpark Road
Brook Park
Extension 3

St. Joseph Cemetery
7916 Woodland Avenue
Cleveland
Extension 2

All Souls Cemetery
10366 Chardon Road
Chardon
Extension 4

Holy Trinity Cemetery
33843 Detroit Avenue / Jaycox Rd.
Avon
Extension 8

St. Mary of the Falls Cemetery
1260 W. Bagley Road
Berea
Extension 3

Assumption of Mary Cemetery
14900 Brookpark Road
Brook Park
Extension 3

Resurrection Cemetery
6303 Center Road
Valley City
Extension 9

St. Mary Cemetery
2677 West 41st Street
Cleveland
Extension 3

Calvary Cemetery
10000 Miles Avenue
Cleveland
Extension 2

St. Anne Cemetery
State Rte 604
Rittman
Extension 7

St. Mary Cemetery
4720 E. 71st Street
Cuyahoga Hts.
Extension 2

Calvary Cemetery
555 N. Ridge Road
Lorain
Extension 6

Ss. Peter & Paul Cemetery
161 W. Clinton Street
Doylestown
Extension 7

St. Mary Cemetery
7284 Lake Avenue
Elyria
Extension 6

Elmhurst Park
32787 Detroit Road
Avon
Extension 8

St. John Cemetery
7000 Woodland Avenue
Cleveland
Extension 2

St. Paul Cemetery
1231 Chardon Road
Euclid
Extension 2

Holy Cross Cemetery
100 E. Waterloo Road
Akron
Extension 7

St. Joseph Cemetery
32789 Detroit Road
Avon
Extension 8

10000 Miles Avenue Cleveland, OH 44105 216-641-7575 www.clecem.org

