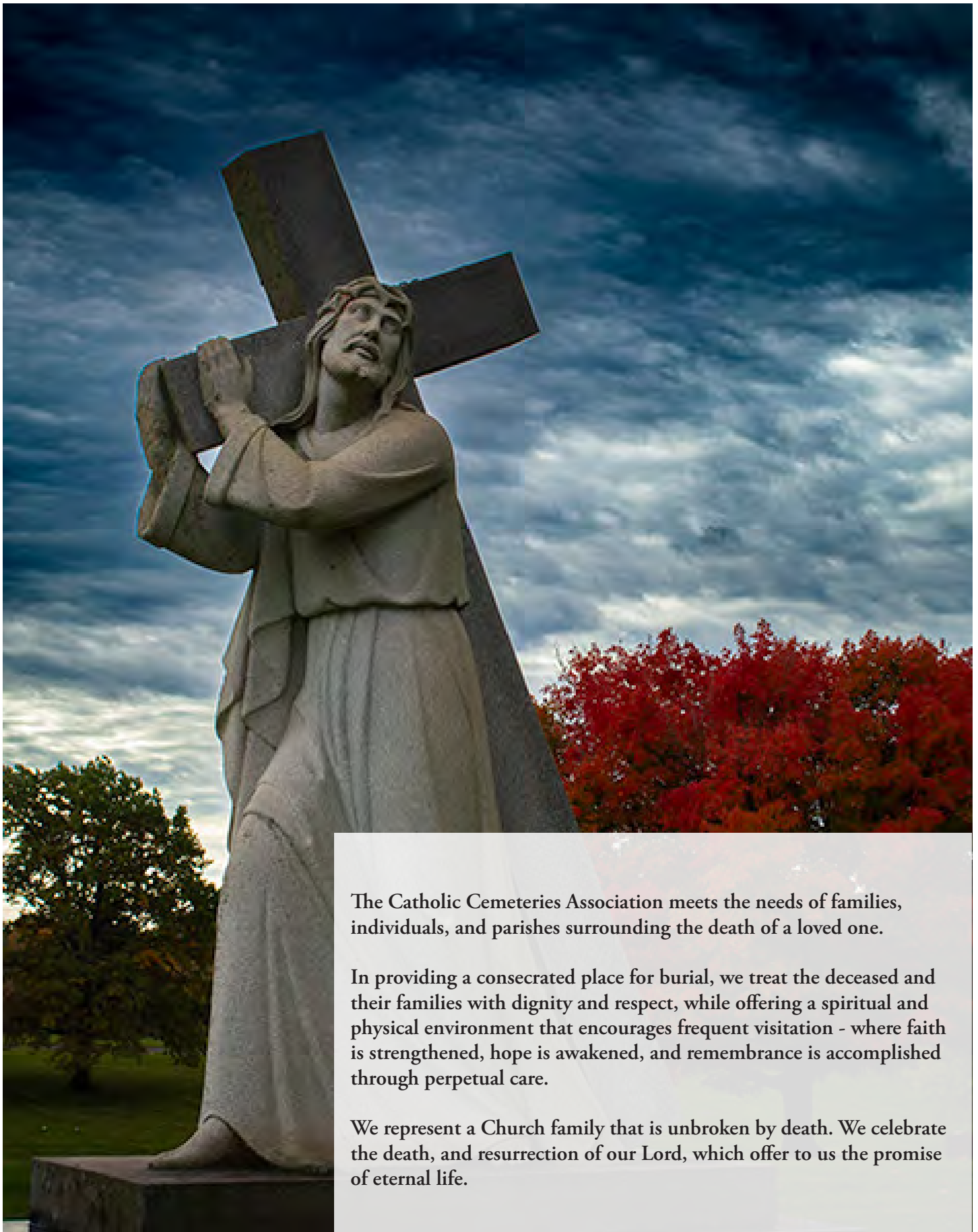


# Information Guide



**ALL SAINTS CEMETERY**  
**CATHOLIC CEMETERIES ASSOCIATION**  
*Faith, Hope, and Remembrance*



The Catholic Cemeteries Association meets the needs of families, individuals, and parishes surrounding the death of a loved one.

In providing a consecrated place for burial, we treat the deceased and their families with dignity and respect, while offering a spiritual and physical environment that encourages frequent visitation - where faith is strengthened, hope is awakened, and remembrance is accomplished through perpetual care.

We represent a Church family that is unbroken by death. We celebrate the death, and resurrection of our Lord, which offer to us the promise of eternal life.



# From the Director

## *Welcome to Catholic Cemeteries!*

Thank you for choosing the CCA. We are truly honored to care for you and your family during your time of need. Whether you're coping with a recent loss or planning for the future – we are here for you.

The CCA manages and maintains 20 cemeteries across the Diocese of Cleveland. Our properties include over 1,900 acres of land, 35 miles of roads, and 60 buildings. We work very hard to maintain our cemeteries, and are constantly improving our grounds by paving roads, planting trees, opening new burial areas, upgrading facilities, and adding streams and ponds. We are self-sustaining and the income generated from all CCA products is invested back into your Catholic cemeteries. This income ensures that each of these improvements can be made.



We make all of our decisions with you, our families, in mind and strive to make our cemeteries places of peaceful, sacred, and prayerful remembrance. The Catholic Cemeteries Association understands the responsibility placed on us to care for families and their dearly departed loved ones. While nothing can take away the pain of losing someone you love, we hope to provide families with the support and guidance they need during life's most difficult times.

We look forward to serving your family and our Catholic community for years to come.


God Bless,


Andrej N. Lah  
Director

### Stay Connected With Catholic Cemeteries

 Follow catholiccemeteriesassociation on Facebook

 Follow clecatholiccems on Instagram

 Subscribe to our channel on YouTube

 Sign up for our e-newsletter at [clecem.org](http://clecem.org)



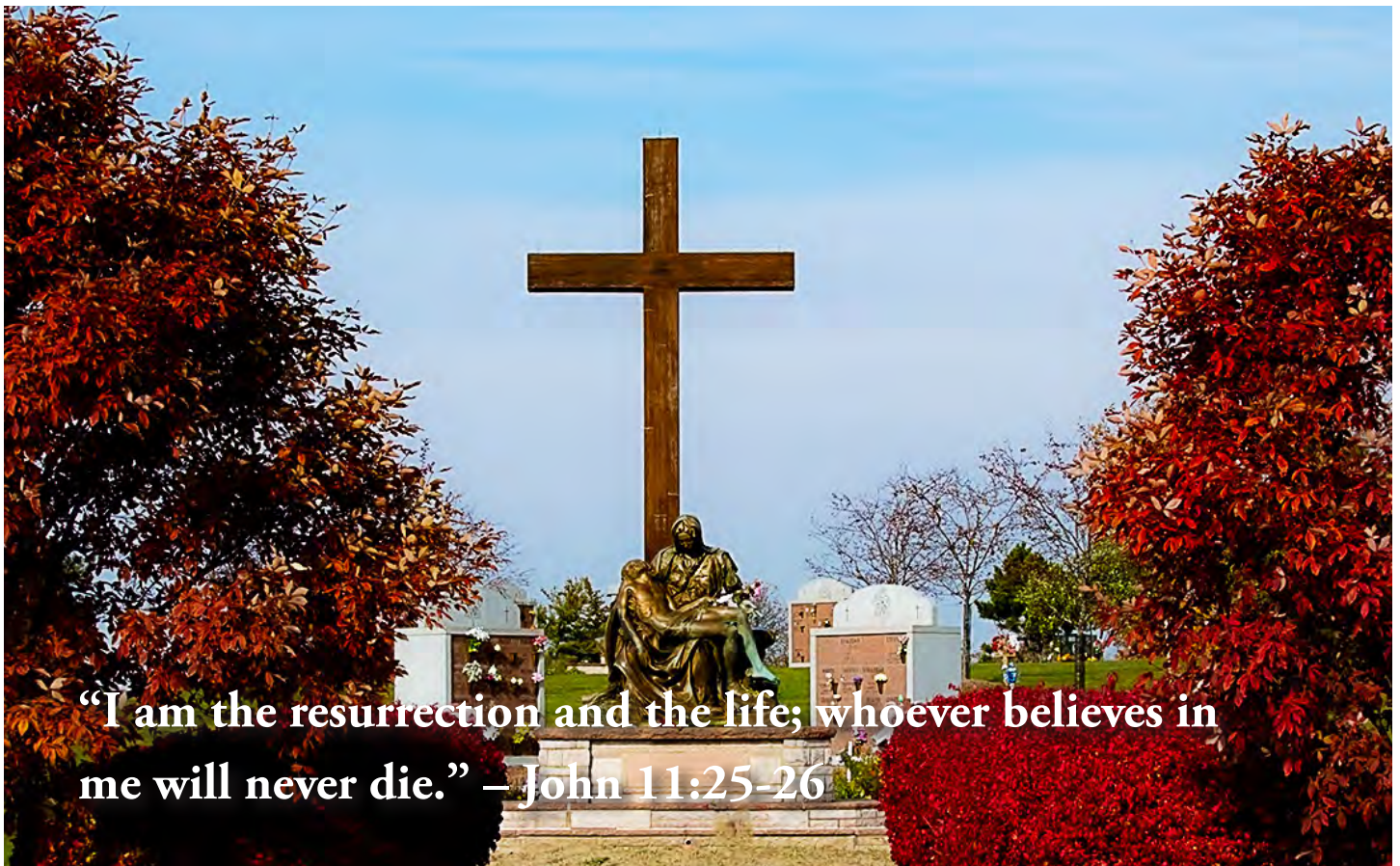


# The Catholic Burial Tradition

Many people wonder what makes a Catholic cemetery different from any other cemetery. In short, Catholic cemetery grounds are consecrated. These sacred grounds are an extension of the Catholic Church. They ensure that those who are together in life are kept together in death.

Catholic cemeteries are reverent and prayerful places. They are adorned with special Christian symbols, monuments, and structures that make visitation a holy and serene experience. Choosing to be buried in a Catholic cemetery is a way of remaining surrounded by the faith and members of the Church even in death. Just like the other sacraments we receive throughout our life, such as baptism, first communion, and marriage, God is calling to be present with us at the completion of our life's journey.

Most importantly, Catholic cemeteries are reminders of the promise of the resurrection. We hear about this promise in the Gospel of John:





# Why Chose the CCA?

## *Generational*

The CCA has been serving Catholic families throughout the Diocese of Cleveland since the mid-1800s.

## *Sacred*

Our consecrated grounds ensure that loved ones are buried in accordance with the Catholic church.

## *Knowledgeable*

Our caring staff will help you and your family with support and guidance as you find a place to cherish memories for generations to come.

## *Compassionate*

The Catholic Cemeteries Association is committed to ministering and assisting families before, during and after the death of a loved one.

## *Connected*

We are proud to be part of the Diocese of Cleveland and aim to make connections within the Catholic community and beyond.

## *Innovative*

The CCA is dedicated to constant improvement and enhancement while staying up to date with the latest technologies.





# **Full Body Burial**

Full body burials, also known as “casket burials,” are the most traditional form of burial. Casket burials involve burying the deceased person’s entire body in the ground or in an above-ground structure. This method has been practiced for centuries and holds religious significance for the Catholic community. This burial option provides a physical resting place for loved ones and allows for traditional funeral rituals and mourning practices. There are several burial options available to you.



*Graves*



*Community Mausoleum*



*Community Mausoleum*



*Family Mausoleum*



*Community Sarcophagi*



*Family Sarcophagi*





# Cremation Burial

## *Why We Bury Cremated Remains*

Burying cremated remains imitates the burial and resurrection of Jesus Christ. The act of burial shows the same respect shown a full body burial. Burying cremated remains ensures the memory of the deceased lives on in a safe and sacred place. Finally, burial prevents the possible loss, damage, or theft of the remains.



*Graves*



*Columbarium*



*Niche Bench*



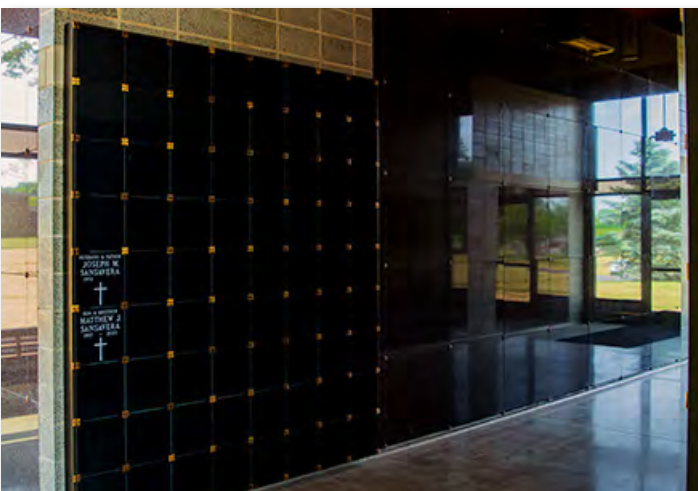
*Niche Pedestal*



*Niche Alcove*



*Thin Niches*



*Community Mausoleum*





# Outer Burial Containers, Urns & Vaults

Our pressure tested outer burial containers protect the casket or urn from the weight of the earth, and preserve the appearance and safety of the gravesite. Each outer burial container has unique qualities and features. Unsealed outer burial containers are available for both cremation and full body burial. Please ask your Family Service Representative for more details.

## Basilica® Cremation Series



*Cultured Marble Ruby Urn*



*Cultured Marble White Urn*



*Cultured Marble Jade Urn*



*Cultured Marble Gold Urn*



*Cultured Marble Black Urn*



*Cultured Marble Brown Urn*



*Cultured Marble Blue Urn*



*Cultured Marble Pink Urn*



*Cultured Marble Veteran Urn*



*Tall Cremation Chest*



*Small Cremation Chest*



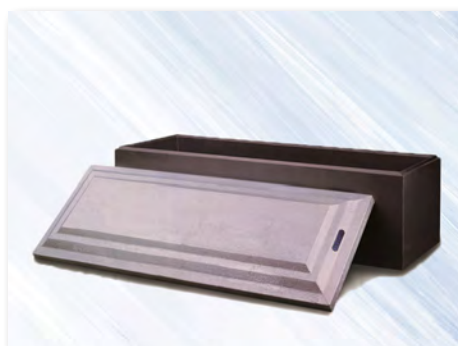
## Basilica® Cement OBC /Vaults



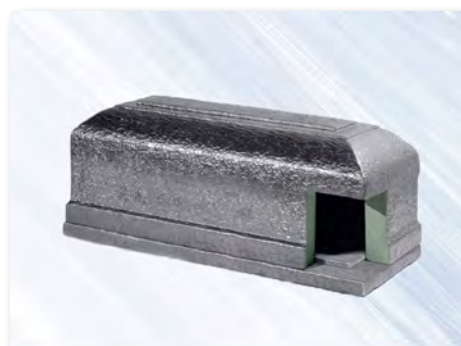
*Basilica® Cathedral*



*Basilica® Arimathea*



*Basilica® Gethsemane*



*Basilica® Sepulcher*

## Basilica® Steel Vaults



*Shepherd VII*



*Shepherd VI*



*Shepherd V*



*Shepherd IV*



*Shepherd III*





# Markers & Monuments

Our experienced Family Service Representatives are dedicated to working with you to help design a custom memorial that truly encapsulates the spirit of your loved one. Entrust us with your memories, and together, we will create a timeless memorial that honors their legacy with the dignity, respect, and artistry it deserves. \*Restrictions on memorialization options may apply.



*Flush Marker*



*Pillow Marker*



*Slant Monument*



*Monument*

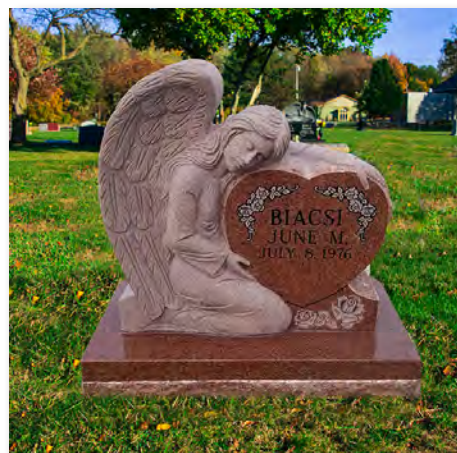


*Monument*



*Custom Monument*









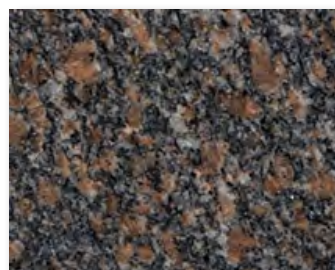
# Granite Colors



*Basilica® Pink*



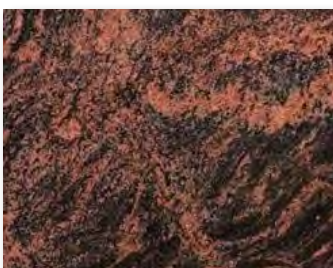
*Basilica® Paradiso*



*Basilica® Brown*



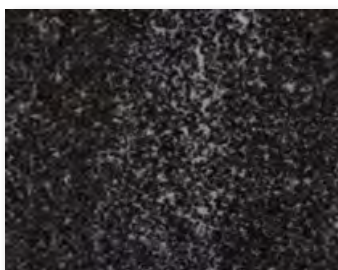
*Basilica® Red*



*Basilica® Aurora Red*



*Basilica® Gray*



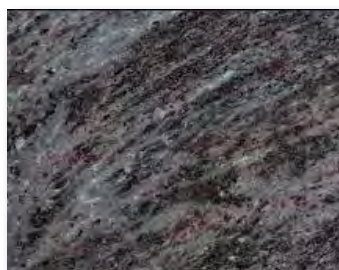
*Basilica® Black Mist*



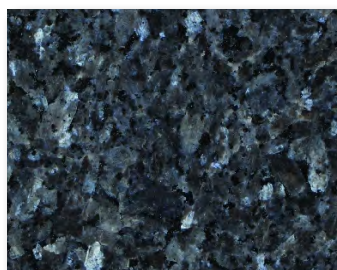
*Basilica® Jet Black*



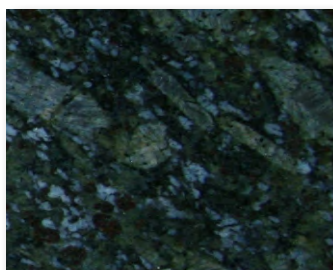
*Basilica® Midnight Black*



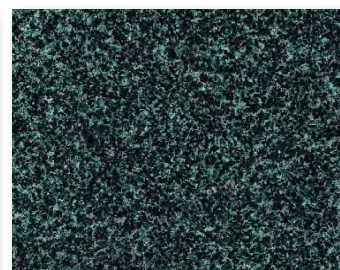
*Basilica® Bahama Blue*



*Basilica® Blue Pearl*



*Basilica® Butterfly Blue*



*Basilica® Green*



Please scan the QR code to learn more about our headstones or visit our website.





# Memorialization



## Crypt & Niche Emblems

*Our wide variety of crypt and niche emblems allow you to express your faith, devotion and service with grace and dignity.*

*\*Some restrictions apply.*



## Crypt & Niche Portraits

*Choose a treasured photograph to be reproduced in either full-color or black and white crypt or niche portrait.*

*\*Some restrictions may apply.*



## Crypt & Niche Bouquets

*Seasonal artificial bouquets are available for your loved one's crypt or niche. Visit our website for more details.*



## Artificial Wreaths

*Artificial wreaths are available for graves during the winter season (November 1 - March 15). Visit our website for more details.*



## Easter/Mother's Day Arrangements

*Celebrate spring holidays with elegant Mother's Day and Easter arrangements from our cemeteries. Visit our website for more details.*



## Fresh Flowers

*Fresh flowers are available during the growing season (March 16 - October 31). Visit our website for more details.*

Please scan the QR code to learn more about our decorations or visit our website.





# Bereavement Support Groups & Special Events

## Monthly Grief Support Groups

We offer a comfortable, private, and encouraging environment where you are free to explore your grief and all you are feeling. Meetings are open discussion, surrounding a monthly topic or whatever is on your heart. Come and be in the presence of those who understand. Our monthly support group meets every 3rd Sunday of each month - 4th Sunday if the 3rd Sunday is a holiday - from 3 pm to 4 pm. Visit our website for dates and locations.

## Special Events

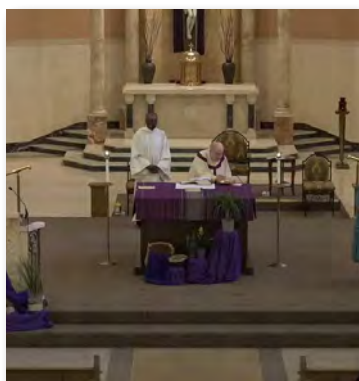
The Catholic Cemeteries Association welcomes you to join any of our ongoing or seasonal events.

The **One-Year Anniversary Mass** is celebrated annually near the feast of St. Joseph, our model and intercessor for the grace of a peaceful passage from this life to our eternal home in Heaven.

**Memorial Day Mass** honors those who gave their lives serving God and country.

In October, the month of the Most Holy Rosary, we pray for your loved ones with a half-mile walking Rosary at the **Walk to Remember**.

**Cemetery Sunday Mass**, held in November, is a spiritual way to honor family members who have passed, and provides families with a special opportunity to visit the graves of their dearly departed loved ones.



*One Year Anniversary Mass*



*Memorial Day Mass*



*Walk to Remember*



*Cemetery Sunday Mass*

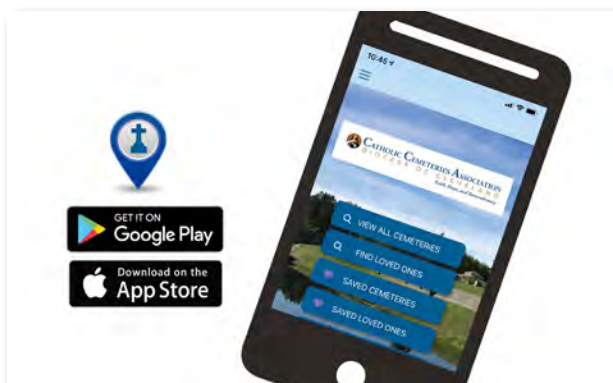


Please scan the QR code to learn more about our support groups and events or visit our website.





# Stay Connected



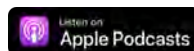
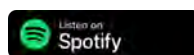
## Find Your Loved One Using The CCA App!

The CCA app provides GPS navigation to your loved one's gravesite, directions to and information about each of our cemeteries. Available for both iOS and Android devices.



## Our Podcast, CCAirwaves

CCAirwaves is the official podcast of the Catholic Cemeteries Association! We provide informational and inspirational segments that will help you work through your grief in a healthy way, learn more about our Catholic faith, and much more.



Look for CCAirwaves on Spotify, Apple Podcasts, or wherever you get your podcasts.



## Read Our Blog!

The Catholic Cemeteries Association's mission is to meet the needs of families, individuals, and parishes surrounding the death of a loved one. To reflect our mission, we started a blog that focuses on strengthening faith, awakening hope, and remembering those we have lost.

Visit any time at [clevelandcatholiccemeteries.wordpress.com](http://clevelandcatholiccemeteries.wordpress.com).

Please scan the QR code to learn more about our app, podcast, and blog.





# Place of Interment Pricing

## *Single Grave Prices*

Some lawn level marker graves may be converted to a monument lot. Certain fees apply. Please ask for details.

**Section 2** - \$2,145

**Section 3** - \$1,430

**Section 5** - \$1,540

**Section 8** - \$1,430

**Section 16** - \$1,925

**Section 17** - \$1,540, \$1,925

**Section 18C** - **NEW** cremation grave packages are available!

## *Mausoleums & Columbariums*

### **Immaculate Heart Mausoleum**

Outside Single Crypt - \$11,500 to \$16,500

Inside Single Crypt - \$13,000 to \$18,000

Inside Double Crypt - \$22,000 to \$28,000

Outside Double Niche - \$6,000 to \$10,000

Inside Single Thin Niche - \$3,000 to \$4,000

Inside Double Niche - \$7,500 to \$11,500

### **Nativity of the Blessed Virgin Mary Mausoleum**

Outside Single Niche - \$1,925 to \$2,640

Outside Double Niche - \$2,970 to \$3,905

Thin Niche - \$2,365 to \$3,575

### **Four Evangelists Mausoleum Addition**

Outside Single Crypt - \$6,545 to \$6,765

Outside Double Crypt - \$8,525 to \$9,350

Inside Double Crypt - \$11,715 to \$13,000

Outside Single Niche - \$1,850 to \$2,145

Inside Single Niche - \$2,145 to \$2,970

Inside Double Niche - \$4,180 to \$6,545

### **Section 2 - St. Paul Columbarium**

Single Niche - \$2,750

Double Niche - \$5,940

### **Section 2 - St. John the Baptist Columbarium**

Single Niche - \$2,750

Double Niche - \$5,940

### **Section 2 Our Lady of the Lake – Cremation Pavilion**

Single Niche \$3,000 to \$4,000

Double Niche \$6,500 to \$8,500

Free Standing Single Niche - \$3,500

### **Section 13 - St. Francis of Assisi Columbarium**

Single Niche \$3,000

### **Section 15 Columbarium**

Single Niche - \$1,815

### **Section 14**

Outside Single Crypt - \$11,825

### **Section 16 Assumption Columbarium East & West**

Single Niche - \$2,750

Double Niche - \$5,940

### **Section 30 - Our Lady Queen of Heaven Columbarium**

Single Niche - \$2,035

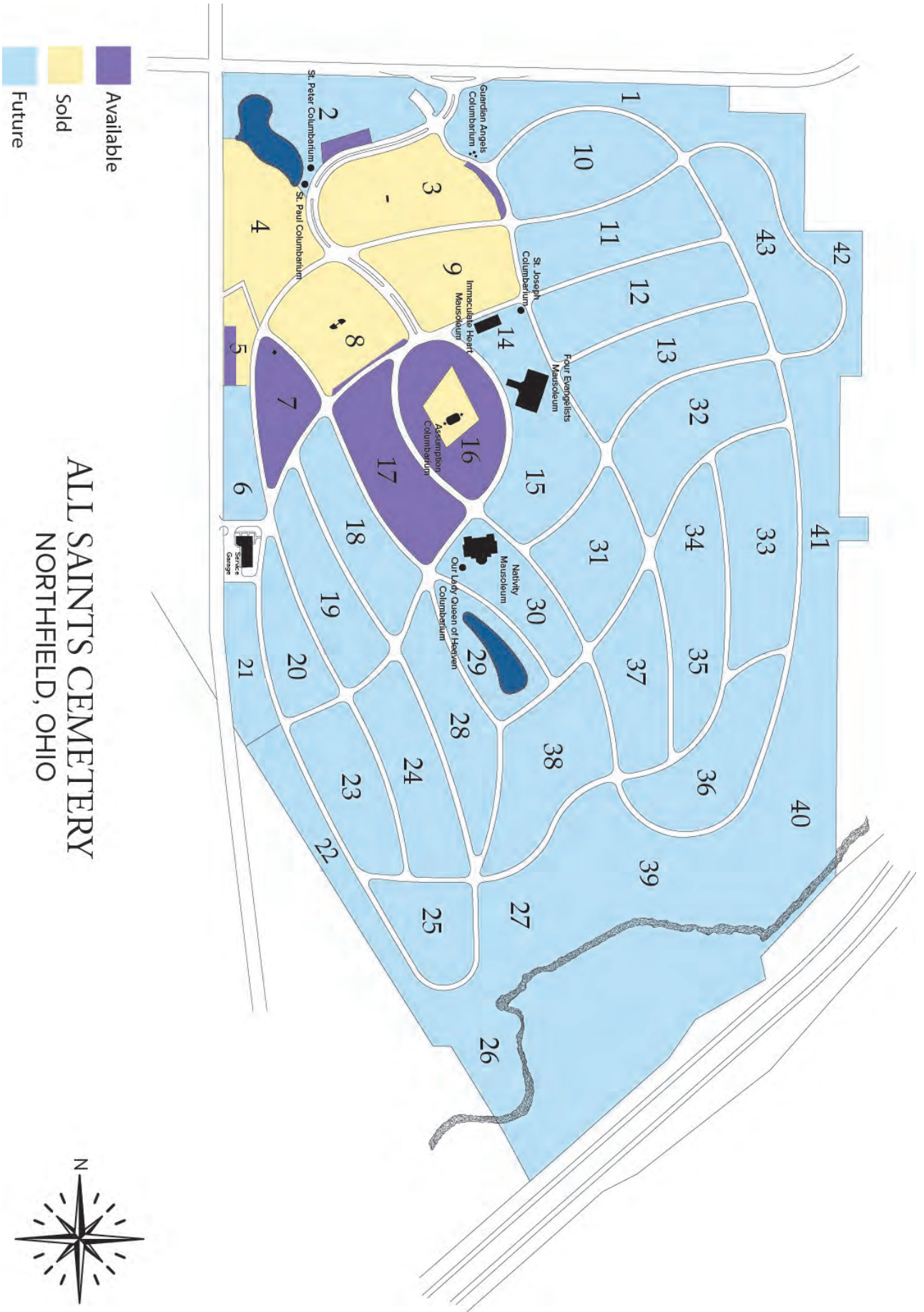
The Association will assess a 15% non-refundable charge on the sale of each place of interment and option. These funds will be placed into the Perpetual Care Trust for the sole purpose of the continuing care of the Association's cemeteries.

Additional charges may apply. Please speak to a Family Service Representative for information.

Prices Subject To Change ~ Interest Free Financing Available

Effective May 2025





# ALL SAINTS CEMETERY NORTHFIELD, OHIO



**All Saints Cemetery**  
480 W. Highland Road  
Northfield  
Extension 5

**Holy Cross Cemetery**  
14609 Brookpark Road  
Brook Park  
Extension 3

**St. Joseph Cemetery**  
7916 Woodland Avenue  
Cleveland  
Extension 2

**All Souls Cemetery**  
10366 Chardon Road  
Chardon  
Extension 4

**Holy Trinity Cemetery**  
33843 Detroit Avenue / Jaycox Rd.  
Avon  
Extension 8

**St. Mary of the Falls Cemetery**  
1260 W. Bagley Road  
Berea  
Extension 3

**Assumption of Mary Cemetery**  
14900 Brookpark Road  
Brook Park  
Extension 3

**Resurrection Cemetery**  
6303 Center Road  
Valley City  
Extension 9

**St. Mary Cemetery**  
2677 West 41st Street  
Cleveland  
Extension 3

**Calvary Cemetery**  
10000 Miles Avenue  
Cleveland  
Extension 2

**St. Anne Cemetery**  
State Rte 604  
Rittman  
Extension 7

**St. Mary Cemetery**  
4720 E. 71st Street  
Cuyahoga Hts.  
Extension 2

**Calvary Cemetery**  
555 N. Ridge Road  
Lorain  
Extension 6

**Ss. Peter & Paul Cemetery**  
161 W. Clinton Street  
Doylestown  
Extension 7

**St. Mary Cemetery**  
7284 Lake Avenue  
Elyria  
Extension 6

**Elmhurst Park**  
32787 Detroit Road  
Avon  
Extension 8

**St. John Cemetery**  
7000 Woodland Avenue  
Cleveland  
Extension 2

**St. Paul Cemetery**  
1231 Chardon Road  
Euclid  
Extension 2

**Holy Cross Cemetery**  
100 E. Waterloo Road  
Akron  
Extension 7

**St. Joseph Cemetery**  
32789 Detroit Road  
Avon  
Extension 8

**10000 Miles Avenue Cleveland, OH 44105 216-641-7575 [www.clecem.org](http://www.clecem.org)**

