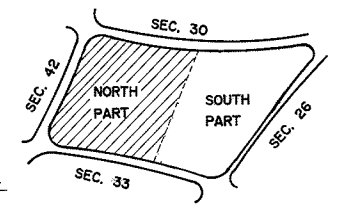


24' DRIVE

24' DRIVE

24' DRIVE



NOTE:
THE LOT NUMBER IS PLACED IN THE
UPPER RIGHT HAND CORNER OF LOTS
AS YOU FACE THE LOTS AND IS
INDICATED THUS

LOCATION OF GRAVE MARKER
SHOWN THUS

ARROW INDICATES DIRECTION
GRAVE MARKER WILL FACE

ALL LOTS ARE 2 GRAVE LOTS EXCEPT
WHERE OTHERWISE NOTED.

ALL 2 GRAVE LOTS ARE 6' x 9'
ALL 3 GRAVE LOTS ARE 9' x 9'

LOT SUMMARY	
1064	2 GRAVE LOTS
104	3 "
1188	TOTAL LOTS



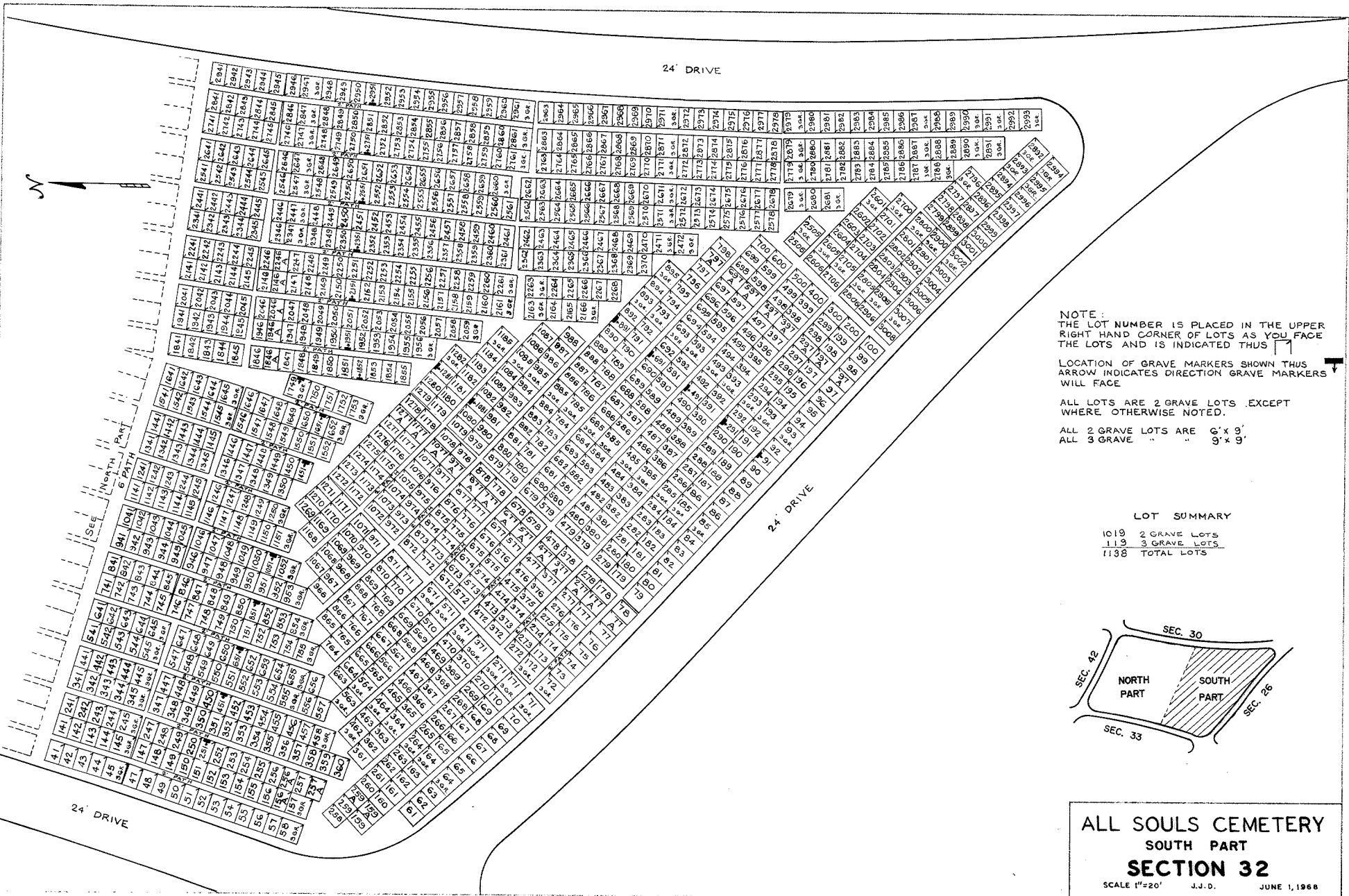
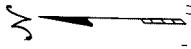
Rev. 12-1-76

ALL SOULS CEMETERY
NORTH PART
SECTION 32

SCALE 1" = 20' J.J.D. JUNE 1, 1968.

Rev. 12-1-76

24' DRIVE



NOTE:
 THE LOT NUMBER IS PLACED IN THE UPPER
 RIGHT HAND CORNER OF LOTS AS YOU FACE
 THE LOTS AND IS INDICATED THUS ↗

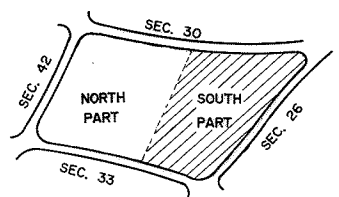
LOCATION OF GRAVE MARKERS SHOWN THUS
 ↖ ARROW INDICATES DIRECTION GRAVE MARKERS
 WILL FACE

ALL LOTS ARE 2 GRAVE LOTS EXCEPT
 WHERE OTHERWISE NOTED.

ALL 2 GRAVE LOTS ARE 6' x 9'
 ALL 3 GRAVE " " " 9' x 9'

LOT SUMMARY

1019	2 GRAVE LOTS
113	3 GRAVE LOTS
1138	TOTAL LOTS



ALL SOULS CEMETERY
SOUTH PART
SECTION 32

SCALE 1"=20' J.J.D. JUNE 1, 1968