

CALVARY CEMETERY

NORTH PART SECTION 11-35

November 1925
Rev. © 9-16-47
Rev. © 7-2-46

F. V. Karber,
Engineer for Calvary Cemetery

SEC. 34

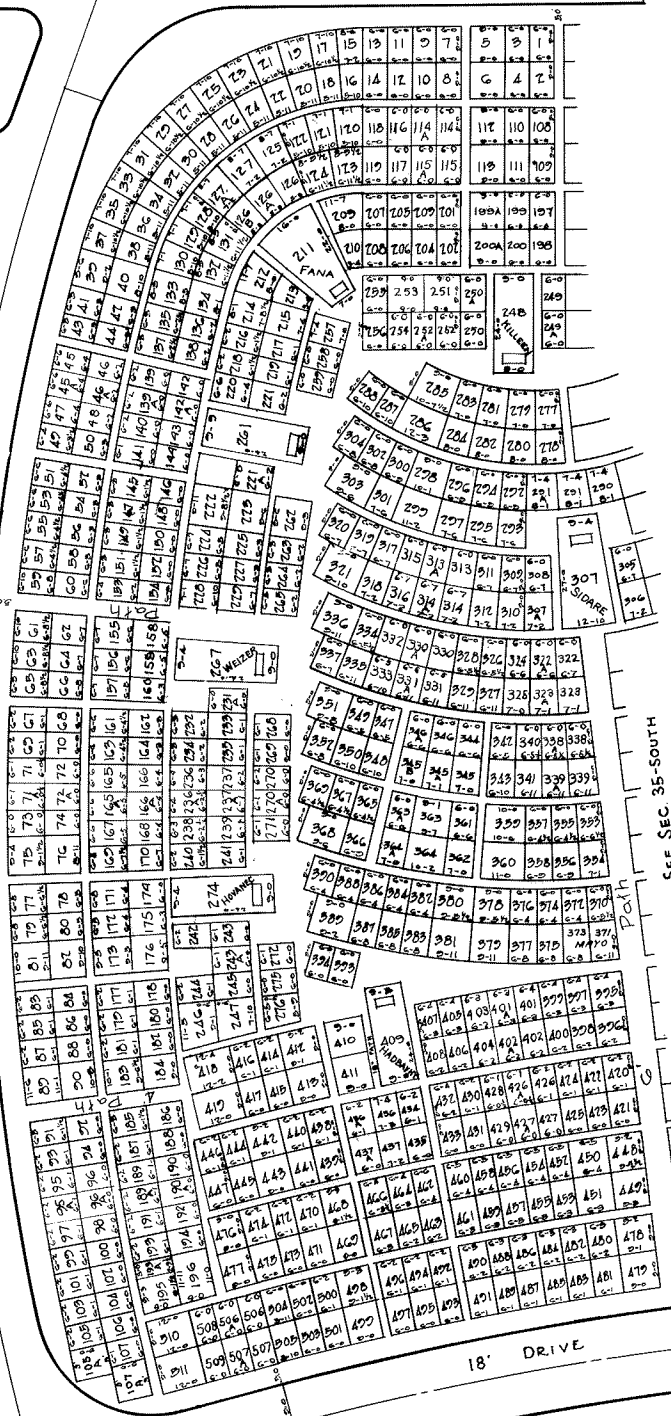
Note: Lot markers placed in upper right hand corner facing center.
SEC. 110

18' DRIVE

18' DRIVE

SEE SEC. 35-SOUTH

SEC. 30



Summary for Entire Section
 Total 2374 Grave Lots - 975 Graves - Area = 36,0597
 Total Non-Grave Lots - 265 Graves - 26517
 Total Lots - 987 Graves - 2204 Area = 68,3579

Total Saleable Area = 68,3579 Sq. Ft.
 Gross Area to Center of Drive = 102,2480 Sq. Ft. = 2,363 Ac.
 Total Saleable Area (this map) = 32,904.1

CALVARY CEMETERY
 SOUTH PART SECTION 35

December, 1935
 Scale 1" = 10'
 F.W. Karber
 Engineer for Calvary Cemetery

Note: Lot markers placed in upper right hand corner facing center.

SEE SEC. 35-NORTH

Map Container

Summary Lots	
5120	1710
7024	432
4	45
	70
Total 4805 1072	

Monument Lots	
3120	1710
16	...
10	...

Size	Area	Gr.	Size	Area	Gr.
1 1/2' x 24'	36	1719	20' x 24'	480	16
1 1/2' x 24'	36	1719	14' x 24'	336	17
1 1/2' x 24'	36	1719	15' x 28'	420	17
1 1/2' x 24'	36	1719	15' x 28'	420	16

