

SCALE 1"=20'
G.C. ASHCO
FEB. 1956

CALVARY CEMETERY

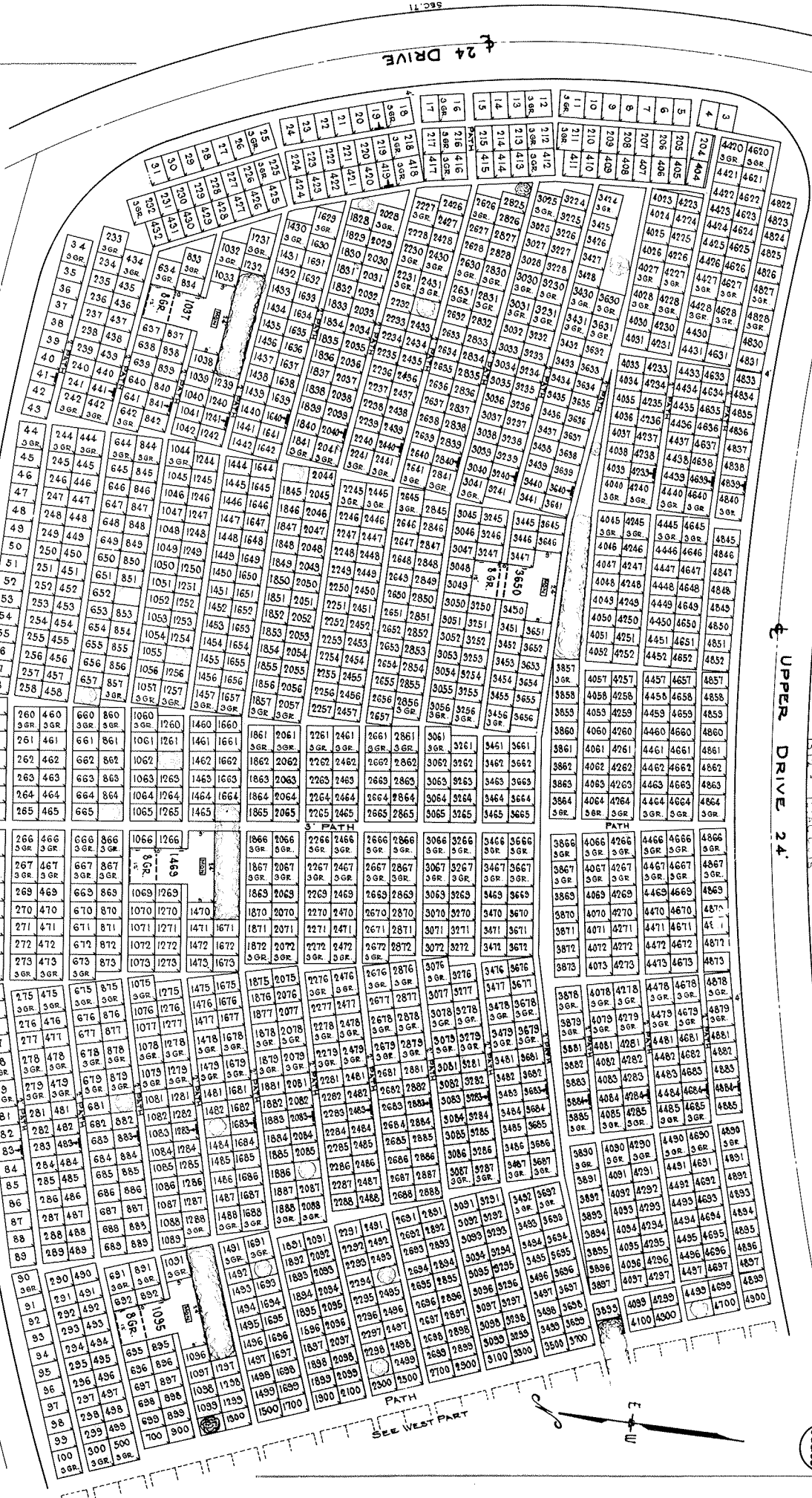
EAST PART OF SECTION 85

THE LOT NUMBER IS PLACED IN THE UPPER RIGHT HAND CORNER OF EACH AS YOU FACE THE LOTS AND IS INDICATED THUS [7]

LOCATION OF GRAVE MARKERS SHOWN THUS [MARKER]
ARROWS INDICATES DIRECTION GRAVE MARKER WILL FACE.

ALL LOTS ARE 2 GRAVE LOTS EXCEPT WHERE OTHERWISE NOTED.
ALL 2 GRAVE LOTS ARE 9' X 9'.
ALL 3 GRAVE LOTS ARE 9' X 9'.

CALVARY CEMETERY ASSOCIATION IS NOT RESPONSIBLE FOR ERRORS LEFT ON SERVICE.



UPPER DRIVE 24

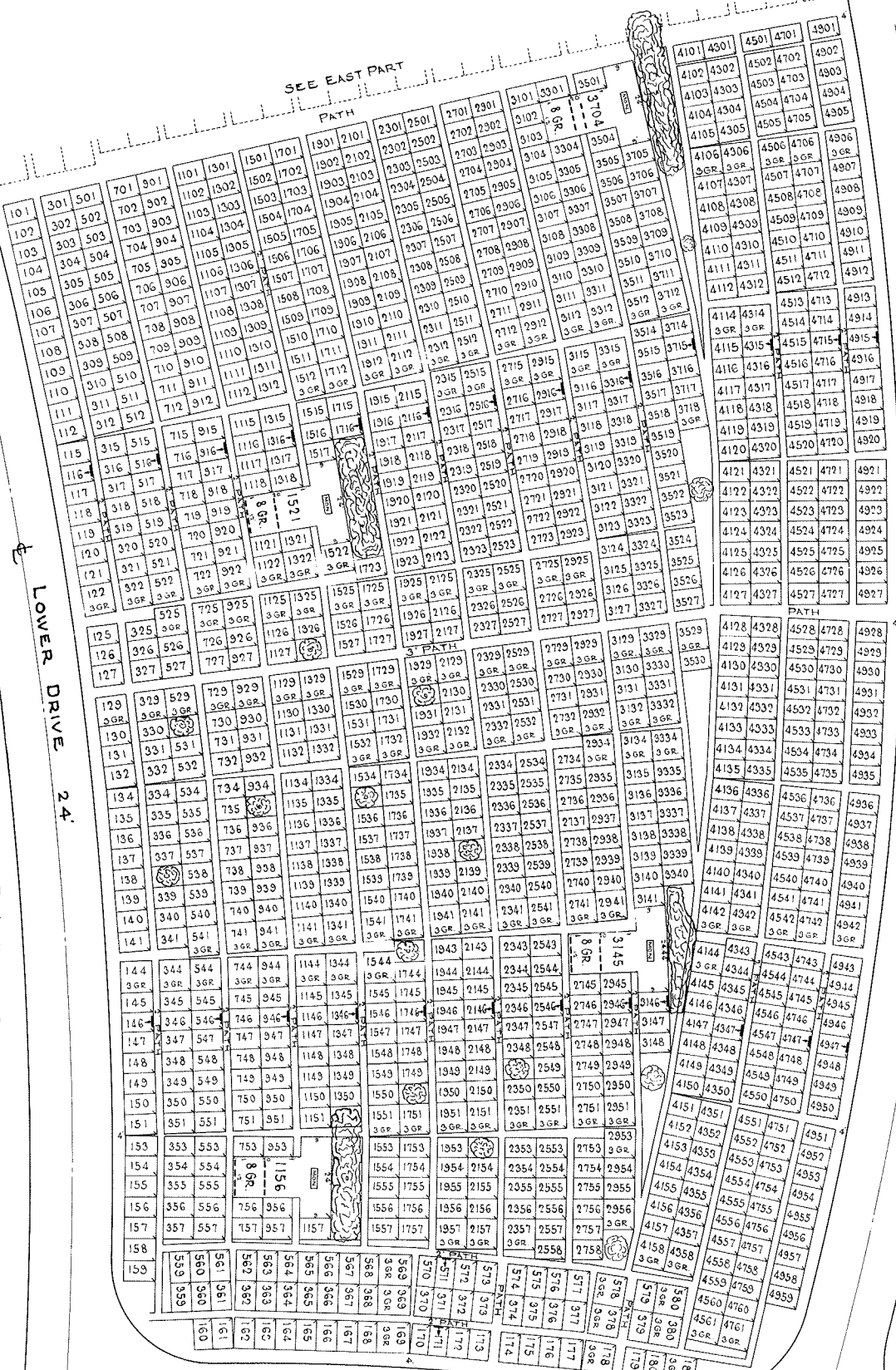
LOWER DRIVE 24

UPPER DRIVE 24

SEE WEST PART



SEE EAST PART



Sec 83

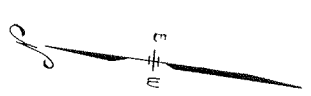
LOWER DRIVE 24'

UPPER DRIVE 24'

Sec 85

24' DRIVE

SEC 84



THE LOT NUMBERS IS PLACED IN THE UPPER RIGHT HAND CORNER OF LOTS AS YOU FACE THE LOTS AND IS INDICATED THUS [arrow pointing to upper right corner]

LOCATION OF GRAVE MARKERS SHOWN THUS [arrow pointing to a circle with a cross]

ARROW INDICATES DIRECTION GRAVE MARKER WILL FACE [arrow pointing to a circle with a cross]

ALL LOTS ARE 2 GRAVE LOTS EXCEPT WHERE OTHERWISE NOTED.

ALL 2 GRAVE LOTS ARE 6'x9'

ALL 3 GRAVE LOTS ARE 8'x9'

CALVARY CEMETERY
WEST PART OF
SECTION 85

SCALE 1"=20' G.C.M.A.D.

FEB/1956



SEC 84



(DRIVE 24')

SEC. 91

THE LOT NUMBER IS PLACED IN THE UPPER RIGHT HAND CORNER OF LOTS AS YOU FACE THE LOT AND IS INDICATED THUS ↗ LOCATION OF GRAVE MARKERS SHOWN THUS ↖ ARROW INDICATES DIRECTION GRAVE MARKERS WILL FACE ALL LOTS ARE 2 GRAVE, EXCEPT WHERE OTHERWISE NOTED ALL 2 GRAVE LOTS ARE 6'x9' ALL 3 GRAVE LOTS ARE 9'x9'

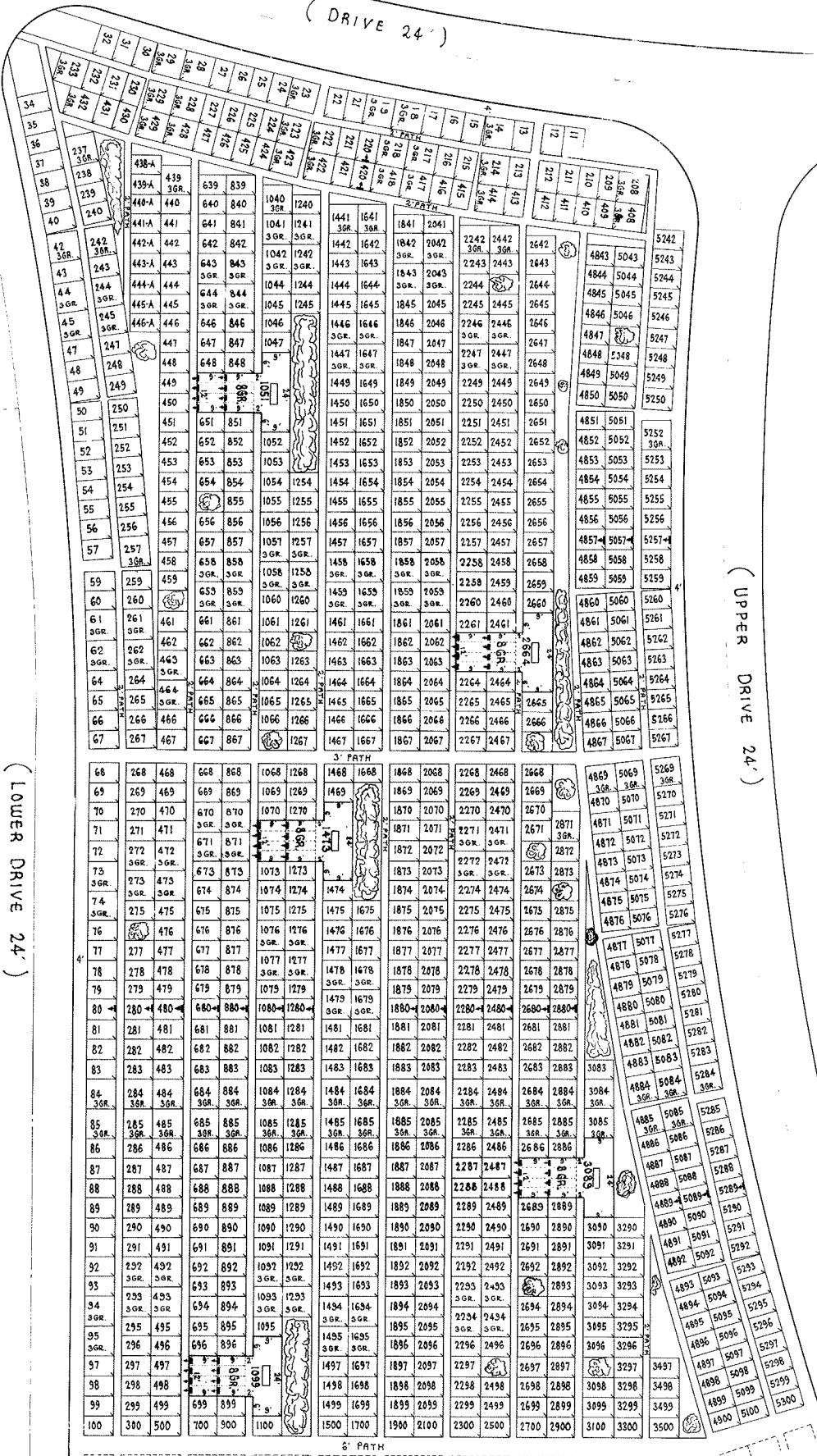
SEC. 88

CALVARY CEMETERY
WEST PART
SECTION 86
SCALE 1"=20' E.J.M. APR. 1954

(LOWER DRIVE 24')

(UPPER DRIVE 24')

SEC 85



SEE EAST PART OF SEC. 86