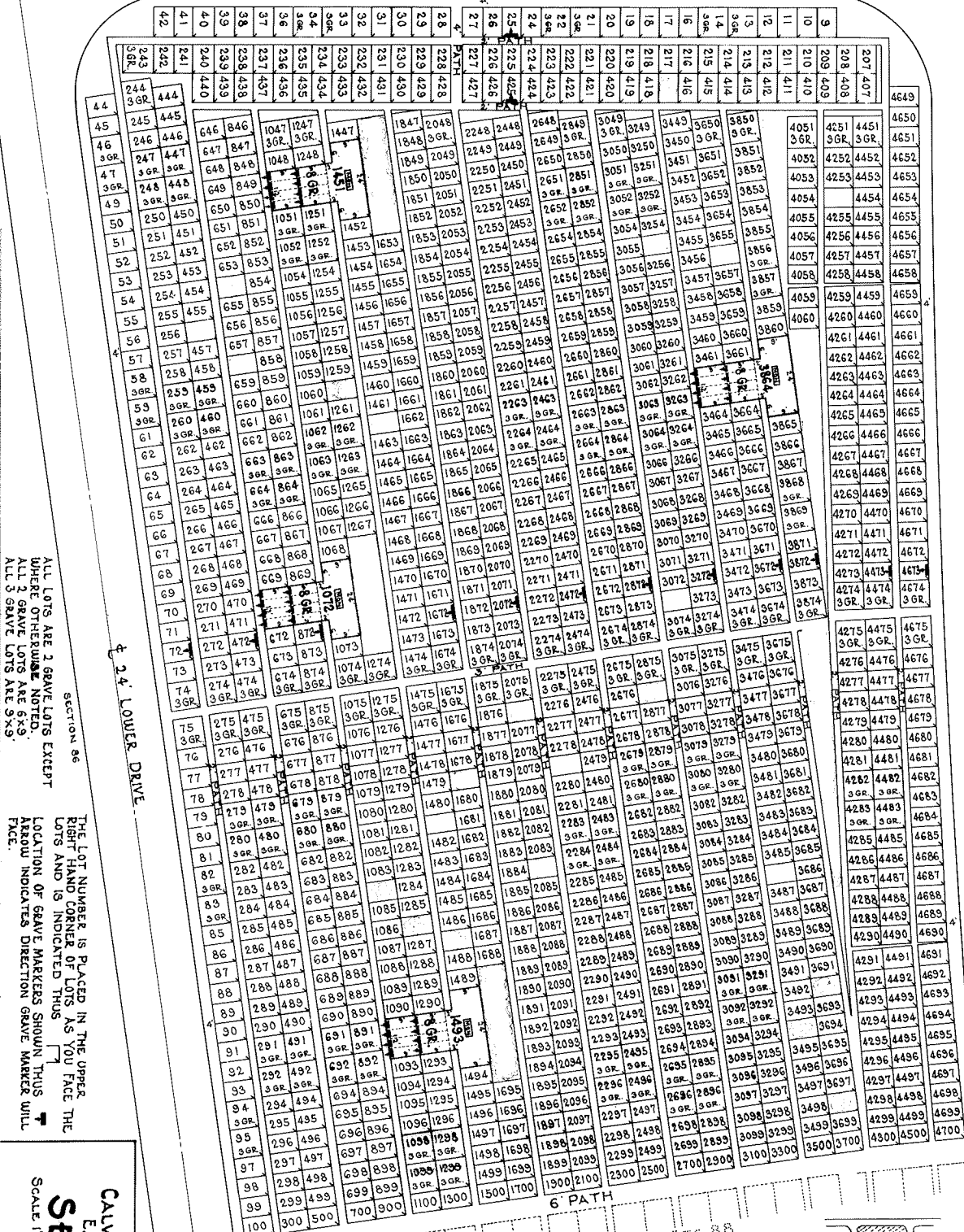


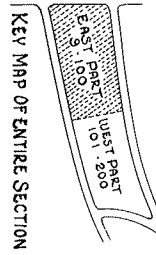
24 DRIVE



ALL LOTS ARE 2 GRAVE LOTS EXCEPT WHERE OTHERWISE NOTED. ALL 2 GRAVE LOTS ARE 6x9. ALL 3 GRAVE LOTS ARE 9x9.

THE LOT NUMBER IS PLACED IN THE UPPER RIGHT HAND CORNER OF LOTS AS YOU FACE THE LOCATION OF GRAVE MARKERS SHOWN THUS T ARROW INDICATES DIRECTION GRAVE MARKER WILL FACE.

CALVARY CEMETERY  
EAST PART OF  
**SECTION 88**  
SCALE 1:20'  
G.C.A.  
JUNE, 1954



SECTION 88

24 UPPER DRIVE

24 LOWER DRIVE

SEE WEST PART SEC. 88

KEY MAP OF ENTIRE SECTION

SEE EAST PART SEC. 88



SECTION 92

KEY MAP OF ENTIRE SECTION

EAST PART  
S. 100  
WEST PART  
N. 101-200

NOTE  
THE LOT NUMBER IS PLACED IN THE UPPER RIGHT  
HAND CORNER OF LOTS AS YOU FACE THE LOTS  
AND IS INDICATED THUS ↗

LOCATION OF GRAVE MARKERS SHOWN THUS  
ARROW INDICATES DIRECTION GRAVE MARKER  
WILL FACE. ↖

ALL LOTS ARE 2 GRAVE LOTS EXCEPT WHERE  
OTHERWISE NOTED.  
ALL 2 GRAVE LOTS ARE 6'x8'  
ALL 3 GRAVE LOTS ARE 9'x9'

CALVARY CEMETERY  
WEST PART OF  
**SECTION 88**  
SCALE 1"=20' G.C.A.  
JUNE, 1924