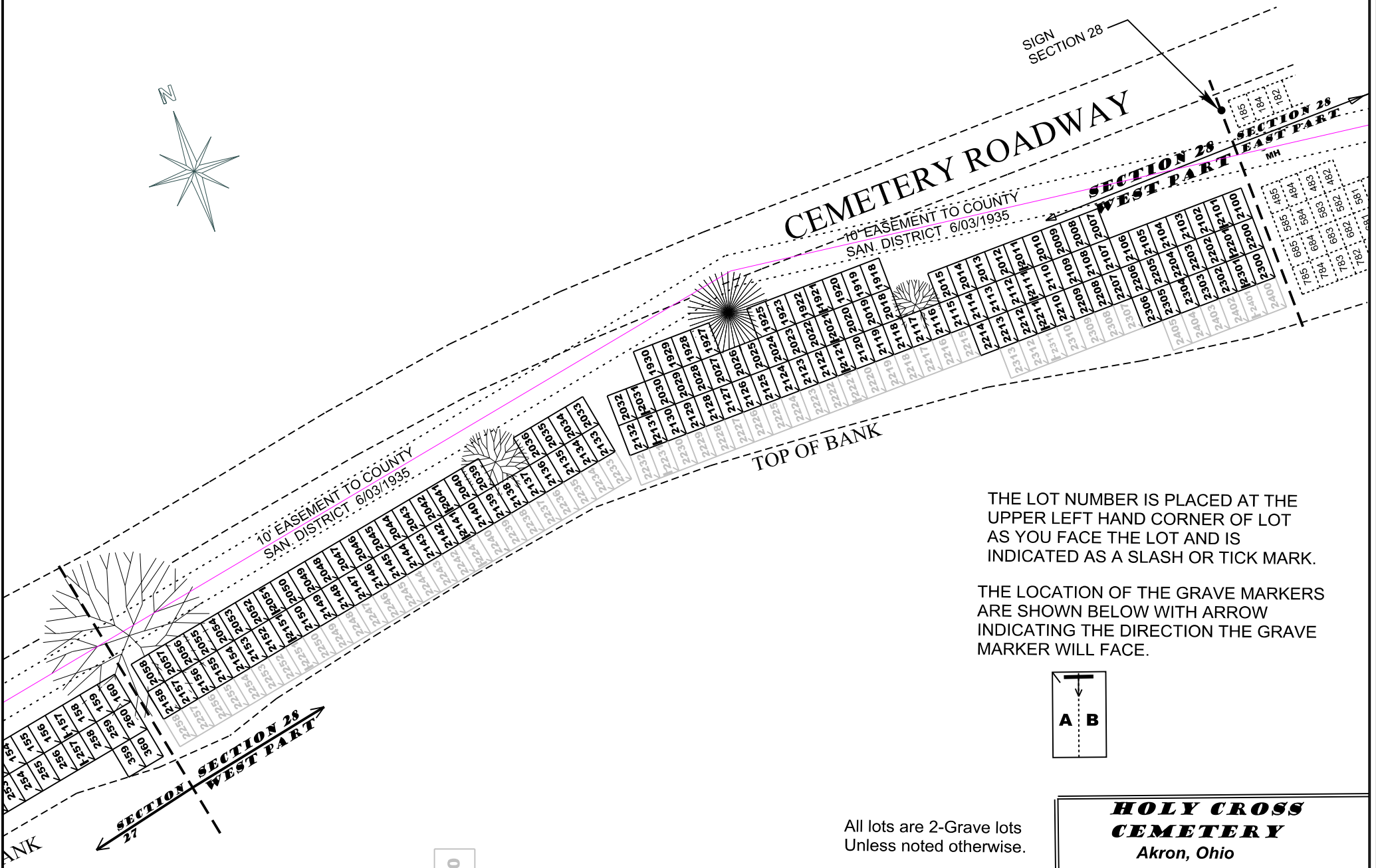


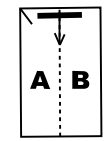
SIGN SECTION 28

# CEMETERY ROADWAY



THE LOT NUMBER IS PLACED AT THE UPPER LEFT HAND CORNER OF LOT AS YOU FACE THE LOT AND IS INDICATED AS A SLASH OR TICK MARK.

THE LOCATION OF THE GRAVE MARKERS ARE SHOWN BELOW WITH ARROW INDICATING THE DIRECTION THE GRAVE MARKER WILL FACE.



**2250** = Denotes future Grave Lots

All lots are 2-Grave lots Unless noted otherwise.

All Lots are 6'-4" x 10'-0"

**HOLY CROSS CEMETERY**  
Akron, Ohio  
**SECTION 28 (WEST)**

Scale: 1" = 40' December, 2017

J. Bischof

Revised: AUGUST 29, 2019