

SEC. 16

SEC. 16

SEC. 25

± 25' LOWER DRIVE

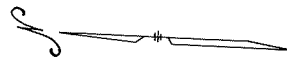
± 20' UPPER DRIVE

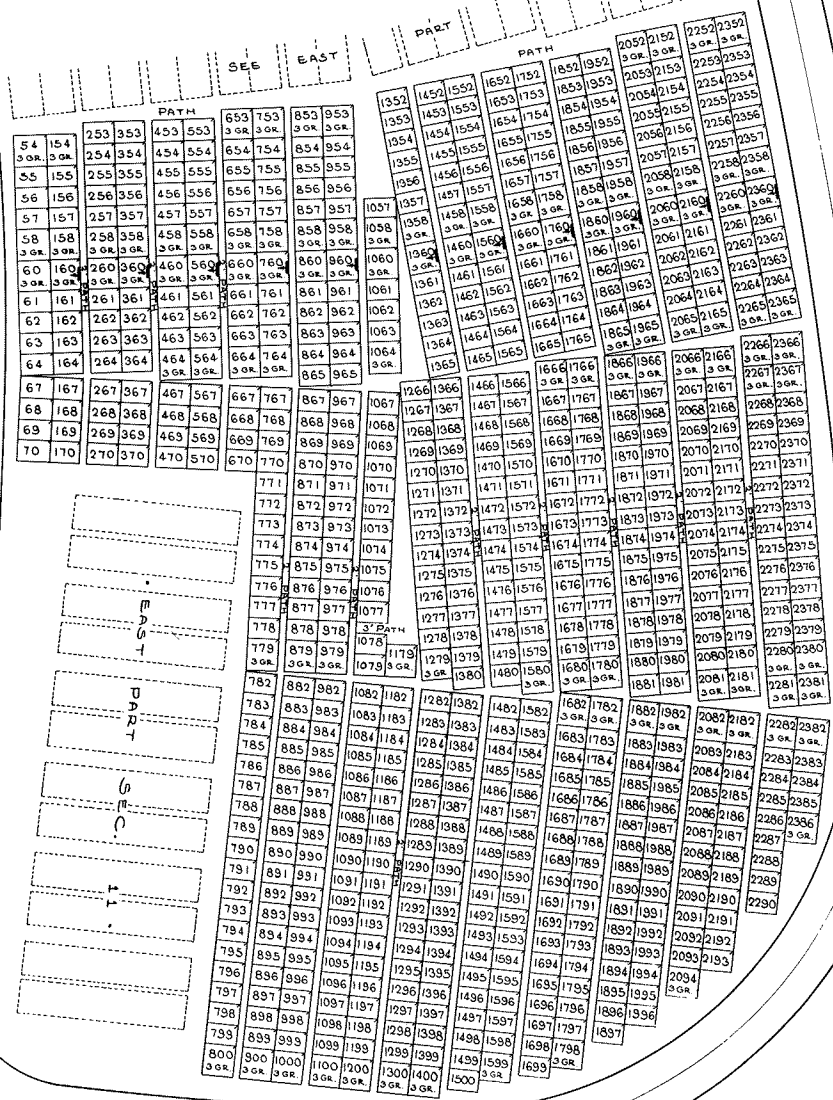
102	201	301	401	501	601	701	801	1501	1602	1703	1804									
3 103	202	302	402	502	602	702	802	1502	1603	1704	1805	1905								
4 104	203	303	403	503	603	703	803	1503	1604	1705	1806	1906								
5 105	204	304	404	504	604	704	804	1504	1605	1706	1807	1907	2007							
6 106	205	305	405	505	605	705	805	1505	1606	1707	1808	1908	2008							
7 107	206	306	406	506	606	706	806	1506	1607	1708	1809	1909	2009	2109						
8 108	207	307	407	507	607	707	807	1507	1608	1709	1810	1910	2010	2110						
9 109	208	308	408	508	608	708	808	1508	1609	1710	1811	1911	2011	2111						
10 110	209	309	409	509	609	709	809	1509	1610	1711	1812	1912	2012	2112						
12 112	212	312	412	512	612	712	812	1512	1611	1712	1813	1913	2013	2113						
13 113	213	313	413	513	613	713	813	1513	1612	1713	1814	1914	2014	2114						
14 114	214	314	414	514	614	714	814	1514	1613	1714	1815	1915	2015	2115						
15 115	215	315	415	515	615	715	815	1515	1614	1715	1816	1916	2016	2116						
16 116	216	316	416	516	616	716	816	1516	1615	1716	1817	1917	2017	2117						
17 117	217	317	417	517	617	717	817	1517	1616	1717	1818	1918	2018	2118						
18 118	218	318	418	518	618	718	818	1518	1617	1718	1819	1919	2019	2119						
19 119	219	319	419	519	619	719	819	1519	1618	1719	1820	1920	2020	2120						
20 120	220	320	420	520	620	720	820	1520	1619	1720	1821	1921	2021	2121						
21 121	221	321	421	521	621	721	821	1521	1620	1721	1822	1922	2022	2122						
22 122	222	322	422	522	622	722	822	1522	1621	1722	1823	1923	2023	2123						
23 123	223	323	423	523	623	723	823	1523	1622	1723	1824	1924	2024	2124						
24 124	224	324	424	524	624	724	824	1524	1623	1724	1825	1925	2025	2125						
25 125	225	325	425	525	625	725	825	1525	1624	1725	1826	1926	2026	2126						
26 126	226	326	426	526	626	726	826	1526	1625	1726	1827	1927	2027	2127						
27 127	227	327	427	527	627	727	827	1527	1626	1727	1828	1928	2028	2128						
28 128	228	328	428	528	628	728	828	1528	1627	1728	1829	1929	2029	2129						
29 129	229	329	429	529	629	729	829	1529	1628	1729	1830	1930	2030	2130						
30 130	230	330	430	530	630	730	830	1530	1629	1730	1831	1931	2031	2131						
31 131	231	331	431	531	631	731	831	1531	1630	1731	1832	1932	2032	2132						
32 132	232	332	432	532	632	732	832	1532	1631	1732	1833	1933	2033	2133						
33 133	233	333	433	533	633	733	833	1533	1632	1733	1834	1934	2034	2134						
34 134	234	334	434	534	634	734	834	1534	1633	1734	1835	1935	2035	2135						
35 135	235	335	435	535	635	735	835	1535	1634	1735	1836	1936	2036	2136						
36 136	236	336	436	536	636	736	836	1536	1635	1736	1837	1937	2037	2137						
37 137	237	337	437	537	637	737	837	1537	1636	1737	1838	1938	2038	2138						
38 138	238	338	438	538	638	738	838	1538	1637	1738	1839	1939	2039	2139						
39 139	239	339	439	539	639	739	839	1539	1638	1739	1840	1940	2040	2140						
40 140	240	340	440	540	640	740	840	1540	1639	1740	1841	1941	2041	2141						
41 141	241	341	441	541	641	741	841	1541	1640	1741	1842	1942	2042	2142						
42 142	242	342	442	542	642	742	842	1542	1641	1742	1843	1943	2043	2143						
44 144	244	344	444	544	644	744	844	1544	1642	1743	1844	1944	2044	2144						
45 145	245	345	445	545	645	745	845	1545	1643	1744	1845	1945	2045	2145						
46 146	246	346	446	546	646	746	846	1546	1644	1745	1846	1946	2046	2146						
47 147	247	347	447	547	647	747	847	1547	1645	1746	1847	1947	2047	2147						
48 148	248	348	448	548	648	748	848	1548	1646	1747	1848	1948	2048	2148						
49 149	249	349	449	549	649	749	849	1549	1647	1748	1849	1949	2049	2149						
50 150	250	350	450	550	650	750	850	1550	1648	1749	1850	1950	2050	2150						
51 151	251	351	451	551	651	751	851	1551	1649	1750	1851	1951	2051	2151						

PATH
SEE WEST PART.

NOTE:
LOCATION OF GRAVE MARKERS
ARROW INDICATES DIRECTION GRAVE
MARKERS WILL FACE.
ALL LOTS ARE 2 GRAVE LOTS UNLESS
OTHERWISE NOTED.
**ALL 3 GRAVE LOTS ARE 6'x9'.
ALL 2 GRAVE LOTS ARE 6'x6'.
THE LOT NUMBER IS PLACED IN THE
UPPER LEFT HAND CORNER OF THE
LOT AND THE DIRECTION OF THE GRAVE
MARKER IS INDICATED BY THIS
ARROW.**
*** LOT SUMMARY *
791 - 3 OR. LOTS
839 - 3 OR. LOTS
881 - TOTAL LOTS**

HOLY CROSS CEMETERY
ARLON, OHIO
EAST PART
SECTION 17
SCALE "1"="20'
G.C.A.
JUNE, 1893





NOTE:
 LOCATION OF GRAVE MARKERS
 SHOWN IN THIS PLAN
 ARROWS INDICATE DIRECTION GRAVE
 MARKERS WILL FACE.
 ALL LOTS ARE 3 GRAVE LOTS UNLESS
 OTHERWISE NOTED.
 ALL 3 GRAVE LOTS ARE 6'x9'.
 ALL 2 GRAVE LOTS ARE 6'x9'.
 THE LOT NUMBERS IS PLACED IN THE
 UPPER QUARTER CORNER OF THE
 LOTS AS YOU FACE THE LOTS AND IS
 INDICATED THUS

LOT SUMMARY:
 694 - 3 GR. LOTS
 106 - 2 GR. LOTS
 100 - TOTAL LOTS

HOLY CROSS CEMETERY
 WEST PART
 SECTION 17

SCALE 1"=20' G.C.A. JUNE, 1963