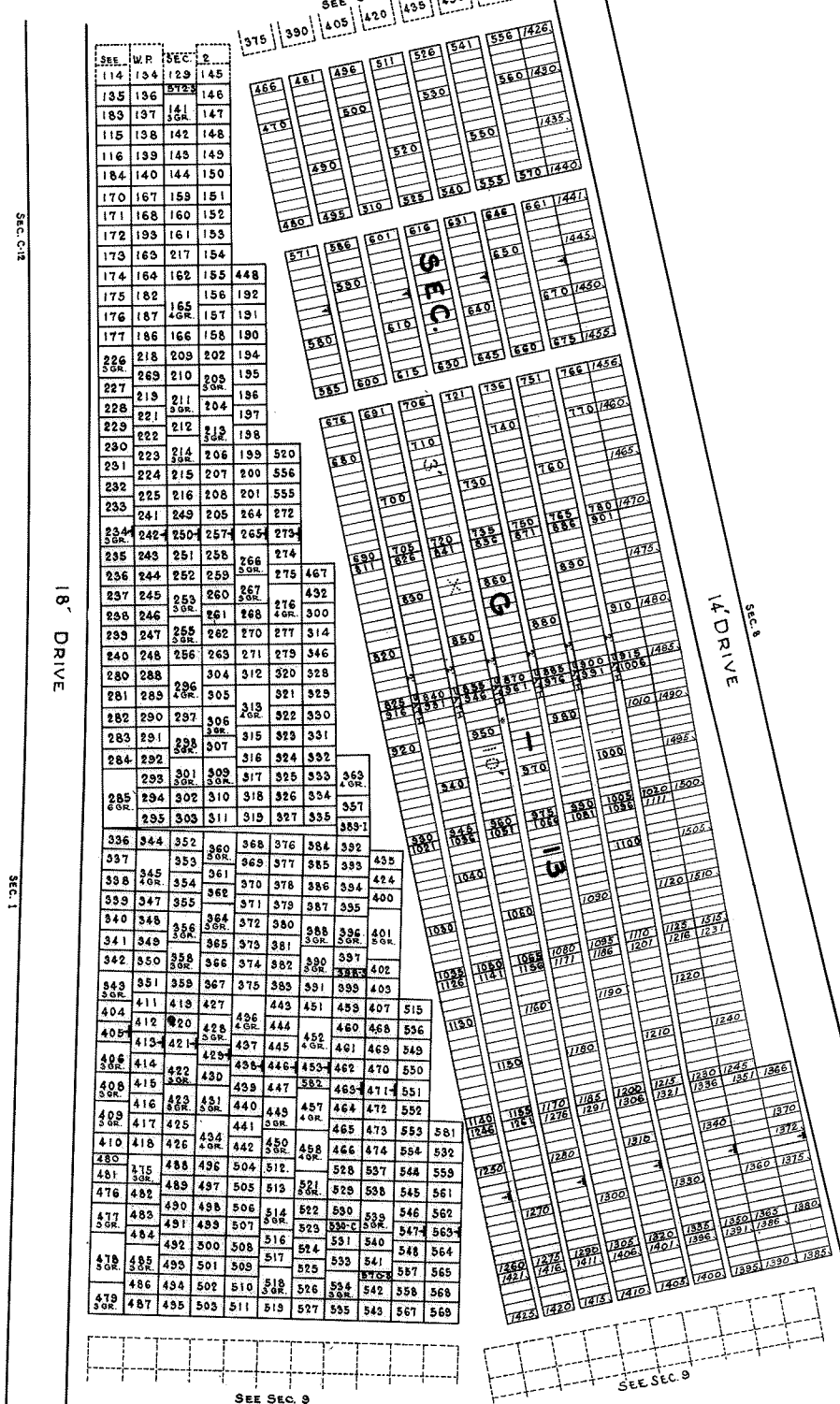


SEE G-13 (WEST PART)  
435 450 465

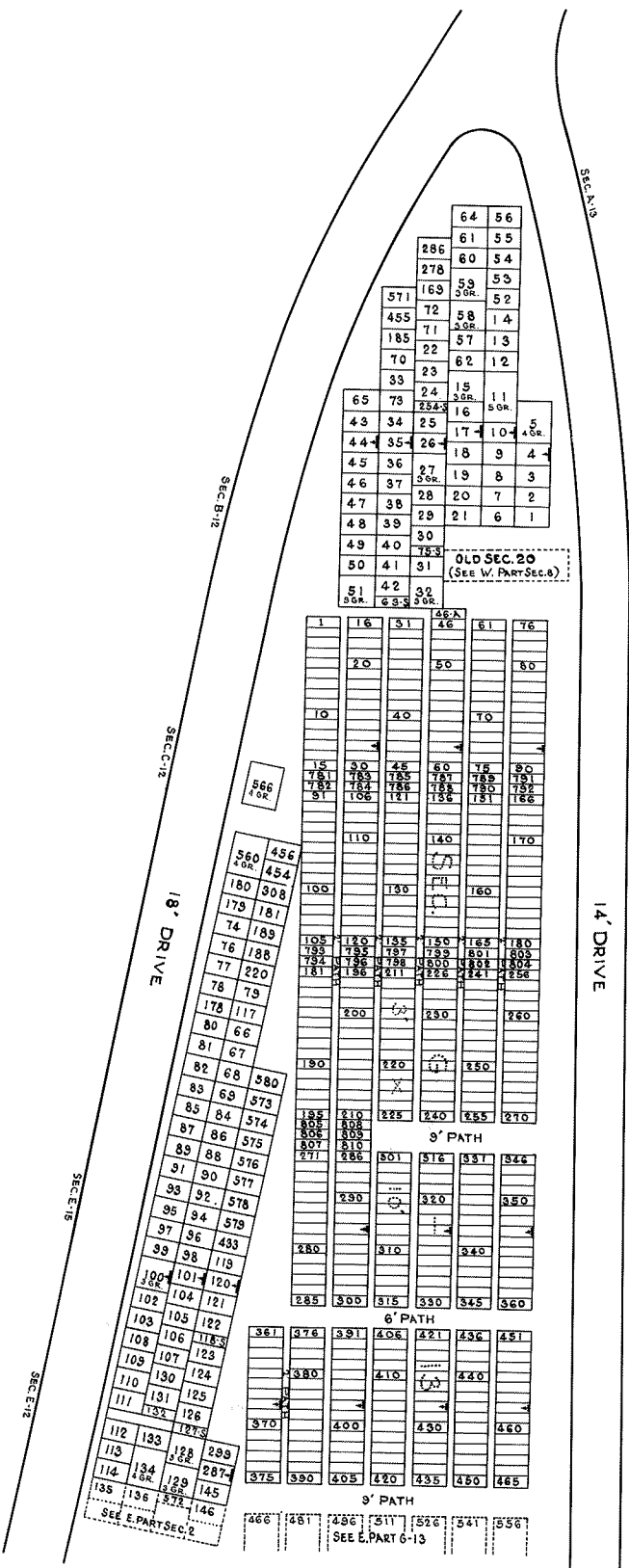
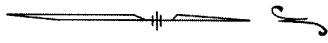


NOTE:  
GRAVE MARKERS ARE SHOWN IN THIS PLAT.  
UPPER RIGHT HAND CORNER OF GRAVES SHOWN THUS.

LOCATION OF GRAVE MARKERS SHOWN THUS  
ARROW INDICATES DIRECTION GRAVE MARKERS WILL FACE.  
ALL LOTS ARE 2 GRAVE LOTS EXCEPT WHERE OTHERWISE NOTED.  
ALL SINGLE GR. ARE 3'x10' (S) (SEC. C-1/3)  
ALL 2 GR. LOTS ARE 6'x10'  
ALL 3 GR. LOTS ARE 9'x10'  
ALL 4 GR. LOTS ARE 12'x10'  
ALL 5 GR. LOTS ARE 15'x10'  
ALL 6 GR. LOTS ARE 18'x10'

REBANK FROM OLD SEC. MAP.  
ADDITIONAL SEC. G-13  
HOLY CROSS CEMETERY  
AKRON, OHIO  
EAST PART  
SECTION 2.  
SCALE 1"=60'  
REV. 11-27-55  
REV. 9-10-57  
MAY-1955

E PART  
SEC 2



LOCATION OF GRAVE MARKERS SHOWN THUS  
 ARROW INDICATES DIRECTION GRAVE MARKERS  
 WILL FACE.

ALL LOTS ARE 2 GRAVE LOTS EXCEPT WHERE  
 OTHERWISE NOTED

ALL SINGLE GR. ARE 3'x10' (S)  
 ALL 2 GR. LOTS ARE 6'x10'  
 ALL 3 GR. LOTS ARE 9'x10'  
 ALL 5 GR. LOTS ARE 15'x10'

ADDITIONAL SEC. } G-13

RE-DRAWN FROM OLD SECTION MAP.

**HOLY CROSS CEMETERY**  
 AKRON, OHIO

**W. PART SEC. 2**

SCALE 1"=20'  
 G.C.A.S.M.D.  
 MAR. 1956

