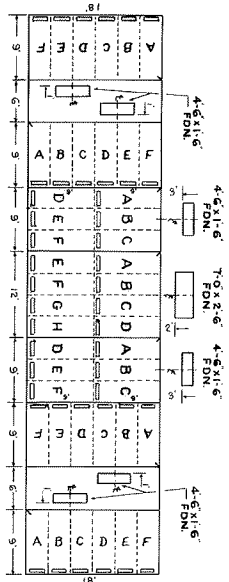


NOTE:
 THE LOT NUMBER IS PLACED IN THE UPPER LEFT HAND CORNER OF THE LOT AS YOU FACE THE LOT AND IS INDICATED THIS WAY

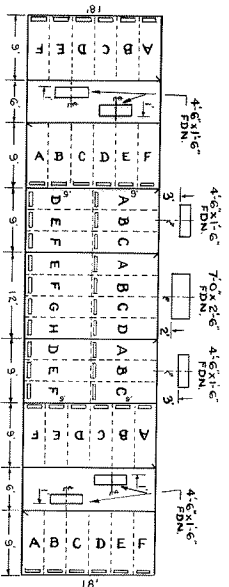
GRAVE MARKER LOCATION SHOWN THIS WAY → ARROW INDICATES DIRECTION GRAVE MARKER WILL FACE.
 ALL LOTS ARE 2 GR. LOTS UNLESS OTHERWISE NOTED.
 ALL 2 GR. LOTS ARE 9' x 9'
 ALL 3 GR. LOTS ARE 9' x 9'
 21' - 2 GR. LOTS
 16 - 3 GR. LOTS
 24 - 6 GR. MON. LOTS
 3 - 6 GR. MON. LOTS
 2 - MAUSOLEUM LOTS

TYPICAL MONUMENT LOTS
 GRAVE MARKER LOCATION
 MONUMENT LOCATION

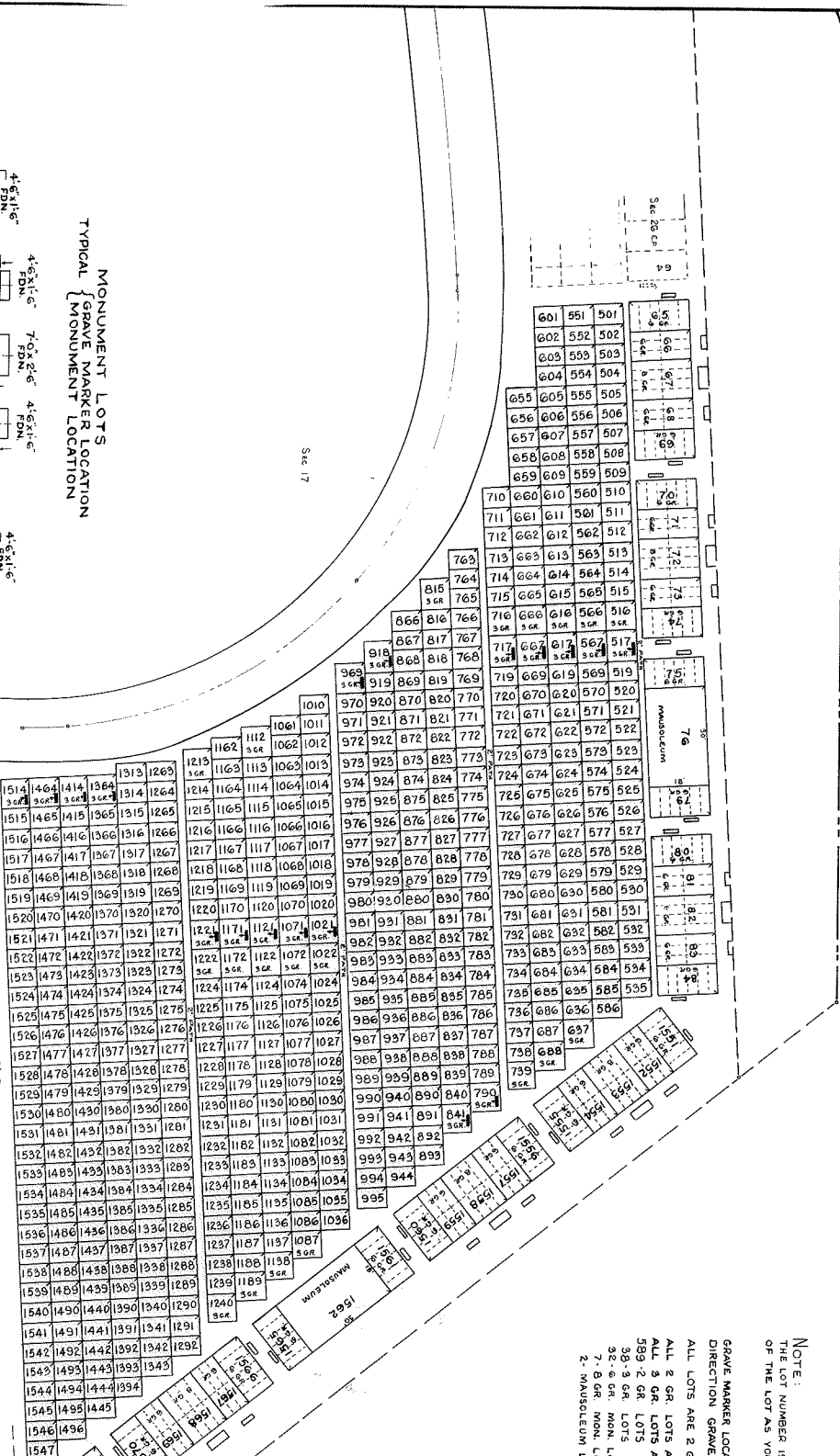


REV 20 S. 5. 12
 REV 10 March 3, 1972

HOLY CROSS CEMETERY
 ARRON, OHIO
 EAST PART
 SECTION 26
 SCALE 1" = 50'
 FEB 26, 1971



TYPICAL MONUMENT LOTS
GRAVE MARKER LOCATION



NOTE:
THE LOT NUMBER IS PLACED IN THE UPPER LEFT HAND CORNER OF THE LOT AS YOU FACE THE LOT AND IS INDICATED THIS WAY

GRAVE MARKER LOCATION SHOWN THIS WAY → ARROW INDICATES DIRECTION GRAVE MARKER WILL FACE.

ALL LOTS ARE 2 GR. LOTS UNLESS OTHERWISE NOTED.

ALL 3 GR LOTS ARE 6'x9'

ALL 2 GR LOTS ARE 6'x9'

589-2 GR LOTS

3x-3 GR LOTS

3x-3 GR. MON. LOTS

7-6 GR. MON. LOTS

2- MANUSOLEUM LOTS

SCALE 1" = 3'-12"
DRAWN BY: [Signature]

HOLY CROSS CEMETERY
ANDON, OHIO
WEST PART
SECTION 26
SCALE 1" = 3'-00"
FEB 26, 1971