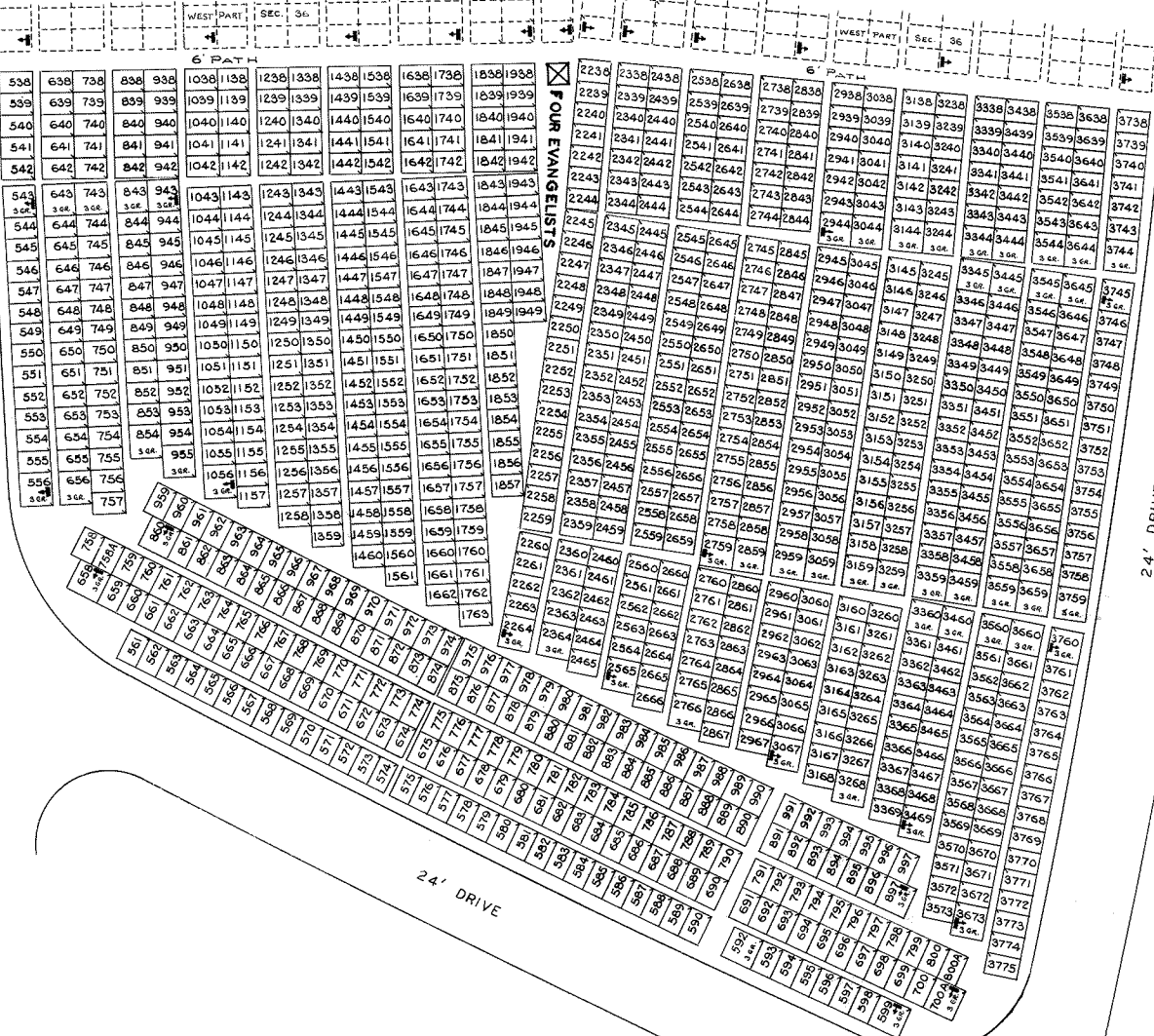


24' DRIVE

24' DRIVE



NOTE:
 THE LOT NUMBER IS PLACED IN THE UPPER
 RIGHT HAND CORNER OF LOTS AS YOU FACE
 THE LOT AND IS INDICATED THUS

LOCATION OF GR. MARKER SHOWN THUS
 ARROW INDICATES DIRECTION GRAVE
 MARKERS WILL FACE.

ALL LOTS ARE 2 GRAVE LOTS EXCEPT
 WHERE OTHERWISE NOTED.

ALL 2 GR. LOTS ARE 6' X 9'
 ALL 3 GR. LOTS ARE 9' X 9'

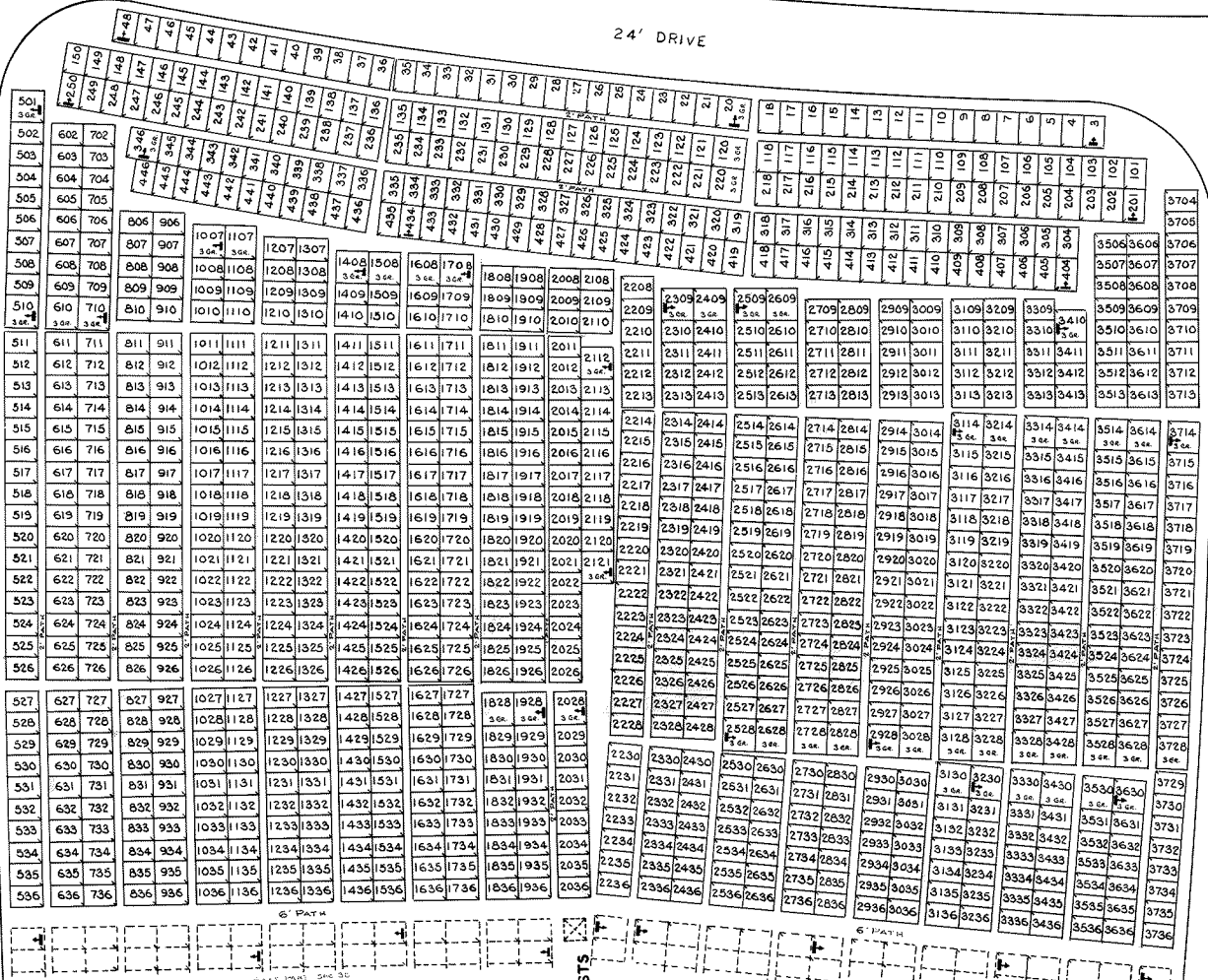
LOT SUMMARY
 949 2 GR. LOTS
 54 3 GR. LOTS
 1003 TOTAL LOTS

HOLY CROSS CEMETERY
 CLEVELAND, OHIO
 EAST PART
 SECTION 36
 SCALE: 1" = 20' T.H. JULY 17, 1976

24' DRIVE

24' DRIVE

24' DRIVE



NOTE
 THE LOT NUMBER IS PLACED IN THE UPPER
 RIGHT HAND CORNER OF LOTS AS YOU FACE
 THE LOT AND IS INDICATED THUS

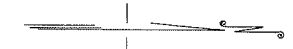
LOCATION OF GR. MARKER SHOWN THUS
 ARROW INDICATES DIRECTION GRAVE
 MARKERS WILL FACE.

ALL LOTS ARE 2 GRAVE LOTS EXCEPT
 WHERE OTHERWISE NOTED.

ALL 2 GR. LOTS ARE 6' X 9'
 ALL 3 GR. LOTS ARE 9' X 9'

LOT SUMMARY
 1124 2 GR. LOTS
 50 3 GR. LOTS
 1174 TOTAL LOTS

Sec. 35



HOLY CROSS CEMETERY
 CLEVELAND, OHIO
 WEST PART
 SECTION 36

SCALE: 1" = 20' T.H. JULY 17, 1976

FOUR
EVANGELISTS

6' PATH
WEST PART - SEC. 36

6' PATH
EAST PART - SEC. 36

Sec. 39