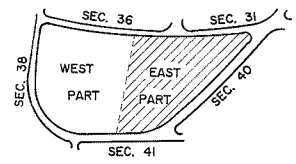


NOTE:
 THE LOT NUMBER IS PLACED IN THE UPPER RIGHT
 HAND CORNER OF LOT AS YOU FACE THE LOT
 AND IS INDICATED THUS

LOCATION OF GR. MARKERS SHOWN THUS
 ARROW INDICATES DIRECTION GR. MARKERS FACE.

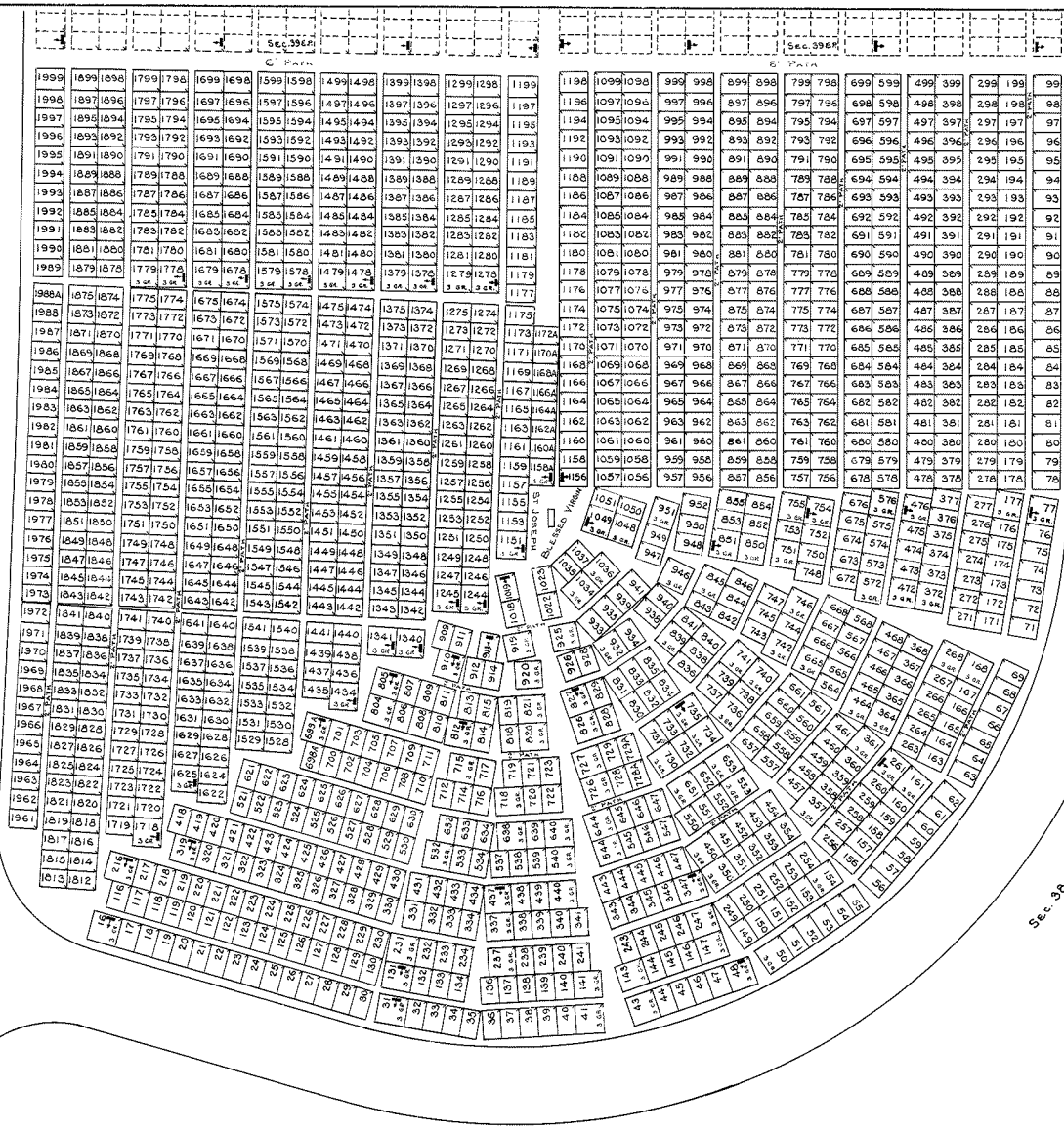
ALL LOTS ARE 2 GR. LOTS EXCEPT AS NOTED.
 ALL 2 GRAVE LOTS ARE 6' X 9'
 ALL 3 GRAVE LOTS ARE 9' X 9'

LOT SUMMARY:
 1727 2 GR. LOTS
 62 3 GR. LOTS
 1789 TOTAL LOTS



HOLY CROSS CEMETERY
 CLEVELAND, OHIO
 EAST PART
 SECTION 39
 SCALE: 1" = 20' T.H. APRIL 7, 1977

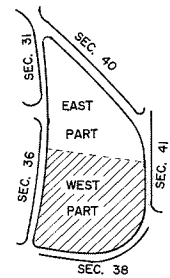
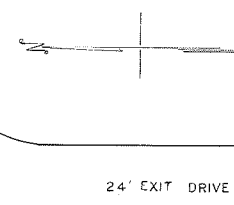
Sec. 36



NOTE:
 THE LOT NUMBER IS PLACED IN THE UPPER RIGHT
 HAND CORNER OF LOT AS YOU FACE THE LOT
 AND IS INDICATED THUS

LOCATION OF GR. MARKERS SHOWN THUS
 ARROW INDICATES DIRECTION GR. MARKERS FACE.
 ALL LOTS ARE 2 GR. LOTS EXCEPT AS NOTED.
 ALL 2 GRAVE LOTS ARE 6' X 9'
 ALL 3 GRAVE LOTS ARE 9' X 9'

LOT SUMMARY:
 1279 2 GR. LOTS
 106 3 GR. LOTS
 1365 TOTAL LOTS



HOLY CROSS CEMETERY
 CLEVELAND, OHIO
 WEST PART
 SECTION 39

SCALE 1" = 20' T.H. JAN. 3, 1977