

NOTE:
THE LOT NUMBER IS PLACED IN THE UPPER
RIGHT HAND CORNER OF LOTS AS YOU FACE
THE LOT AND IS INDICATED THUS

LOCATION OF GR. MARKER SHOWN THUS
ARROW INDICATES DIRECTION GRAVE
MARKERS WILL FACE.

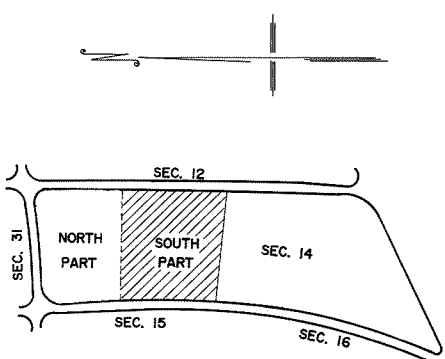
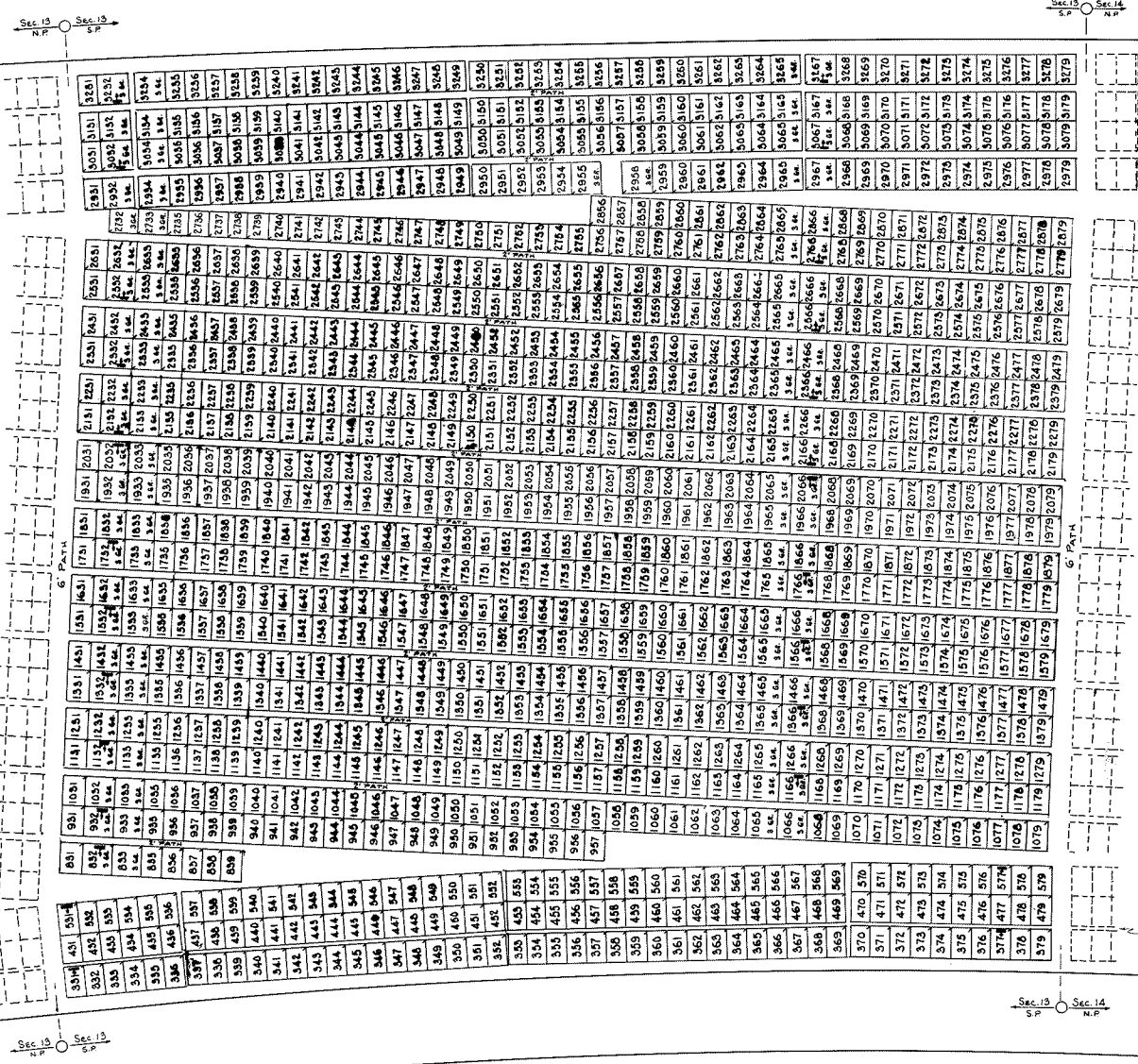
ALL LOTS ARE 2 GRAVE LOTS EXCEPT
WHERE OTHERWISE NOTED.

ALL 2 GR. LOTS ARE 6' X 9'
ALL 3 GR. LOTS ARE 9' X 9'

LOT SUMMARY
804 2 GR. LOTS
22 3 GR. LOTS
826 TOTAL LOTS

ALL SOULS CEMETERY
NORTH PART
SECTION 13

SCALE: 1" = 20' T.H. JULY 30, 1975



NOTE: THE LOT NUMBER IS PLACED IN THE UPPER RIGHT HAND CORNER OF LOTS AS YOU FACE THE LOT AND IS INDICATED THUS

LOCATION OF GR. MARKER SHOWN THUS
 ↑
 ARROW INDICATES DIRECTION GRAVE MARKERS WILL FACE.

ALL LOTS ARE 2 GRAVE LOTS EXCEPT WHERE OTHERWISE NOTED.

ALL 2 GR. LOTS ARE 6' X 9'
 ALL 3 GR. LOTS ARE 9' X 9'

LOT SUMMARY
 1142 2 GR. LOTS
 92 3 GR. LOTS
 1234 TOTAL LOTS

ALL SOULS CEMETERY
 SOUTH PART
 SECTION 13

SCALE: 1" = 20' T.H. JULY 30, 1975