

NOTE:
 THE LOT NUMBER IS PLACED IN THE UPPER RIGHT HAND CORNER OF LOTS AS YOU FACE THE LOTS AND IS INDICATED
 LOCATION OF GRAVE MARKERS SHOWN BY ARROW INDICATES DIRECTION GRAVE MARKERS WILL FACE.

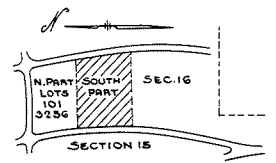
ALL LOTS ARE 2 GRAVE LOTS EXCEPT WHERE OTHERWISE NOTED.

ALL 2 GRAVE LOTS ARE 6'x3'
 ALL 3 GRAVE LOTS ARE 5'x3'

LOT SUMMARY
 1161 2 GRAVE LOTS
 170 3 GRAVE LOTS
 1331 TOTAL LOTS

ALL SOULS CEMETERY
 SOUTH PART
SECTION 15

SCALE 1" = 20'
 REV. 2-1969 G. C. A. MAY, 1958



NOTE:
 THE LOT NUMBER IS PLACED IN THE UPPER
 RIGHT HAND CORNER OF LOTS AS YOU FACE
 THE LOTS AND IS INDICATED THUS [Symbol]

LOCATION OF GRAVE MARKERS SHOWN THUS [Symbol]
 ARROW INDICATES DIRECTION GRAVE MARKERS
 WILL FACE.

ALL LOTS ARE 2 GRAVE LOTS EXCEPT WHERE
 OTHERWISE NOTED.

ALL 2 GRAVE LOTS ARE 6'x5'
 ALL 3 GRAVE LOTS ARE 9'x5'

LOT SUMMARY
 883 2 GRAVE LOTS
 163 3 GRAVE LOTS
 1046 TOTAL LOTS

ALL SOULS CEMETERY
 NORTH PART
SECTION 15
 SCALE 1" = 20' G.C.A. MAY, 1958