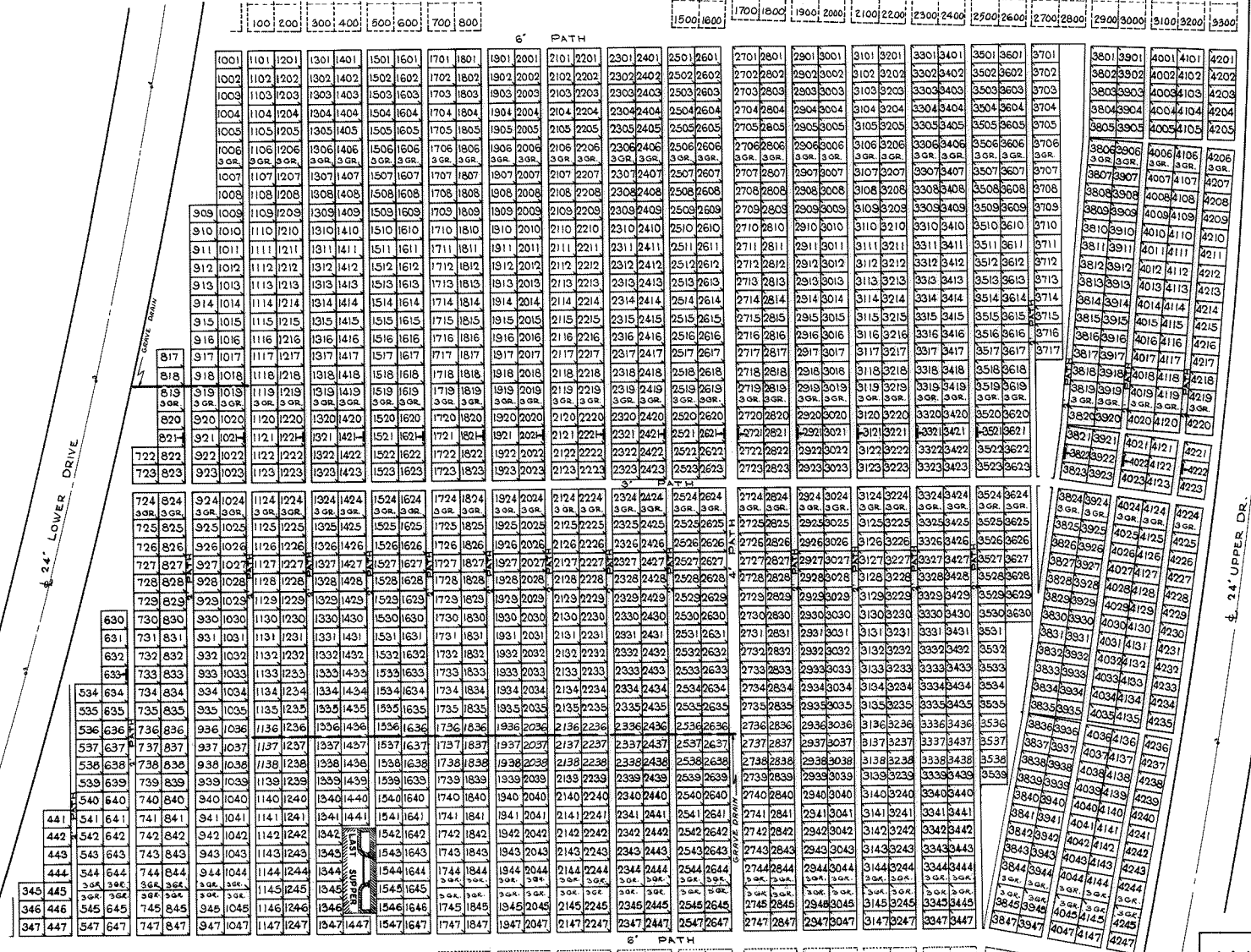


SEE SOUTH PART SEC. 15



NOTE:
THE LOT NUMBER IS PLACED IN THE UPPER RIGHT HAND CORNER OF THE LOTS AS YOU FACE THE LOTS AND IS INDICATED THUS. ↗

LOCATION OF GRAVE MARKERS SHOWN THUS ↑
ARROW INDICATES DIRECTION GRAVE MARKERS WILL FACE.

ALL LOTS ARE 2 GRAVE LOTS EXCEPT WHERE OTHERWISE NOTED.

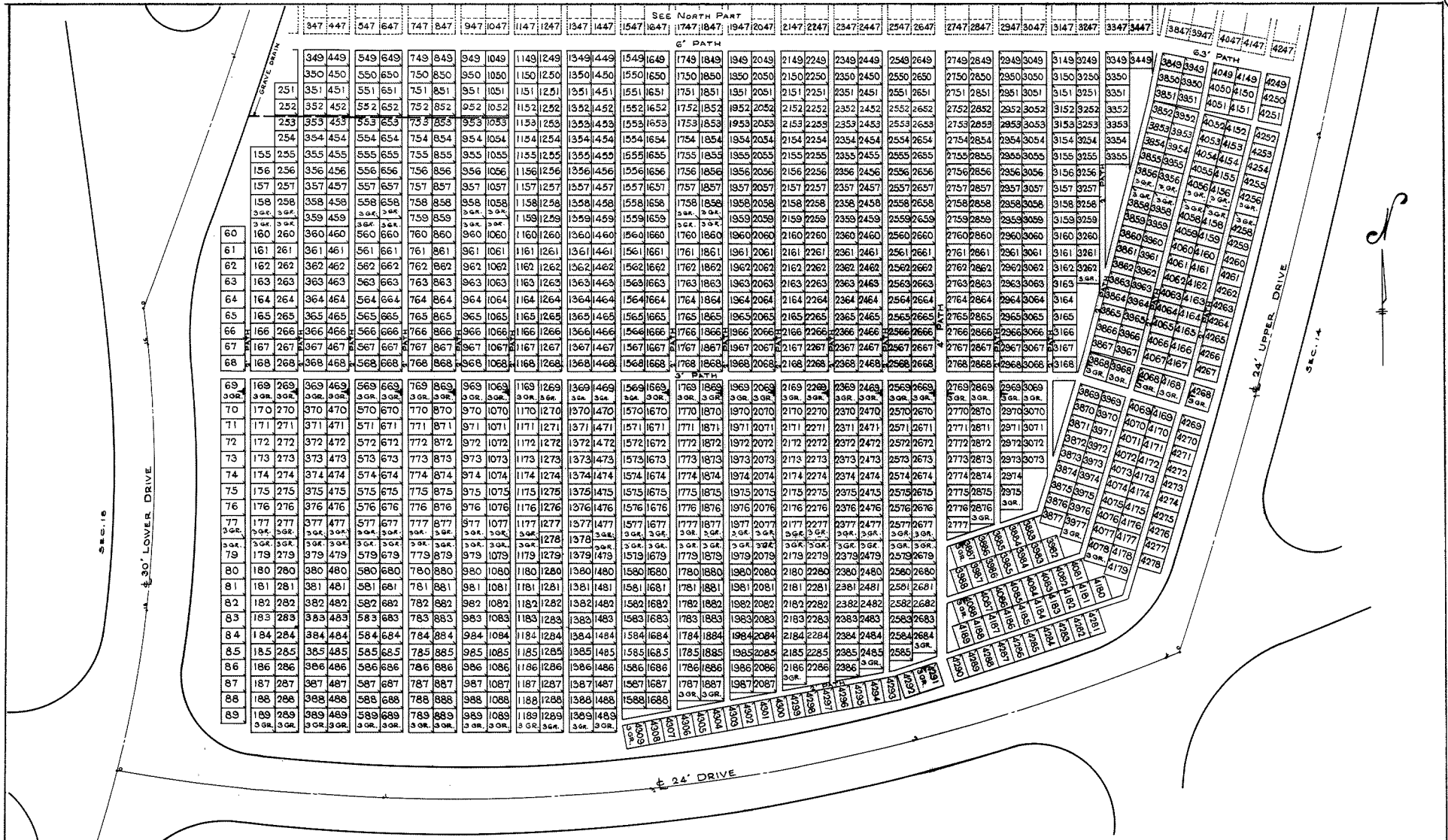
ALL 2 GRAVE LOTS ARE 6'x9'
ALL 3 GRAVE LOTS ARE 9'x9'

LOT SUMMARY
1444 2 GRAVE LOTS
125 3 GRAVE LOTS
1559 TOTAL LOTS

ALL SOULS CEMETERY
NORTH PART
SECTION 16

SCALE 1" = 20' G.C.A. JUNE, 1962

REV. 12-27-68



NOTE
 THE LOT NUMBER IS PLACED IN THE
 UPPER RIGHT HAND CORNER OF THE LOTS
 AS YOU FACE THE LOTS AND IS INDICATED
 THUS []

LOCATION OF GRAVE MARKERS SHOWN THUS ▼

ARROW INDICATES DIRECTION GRAVE
 MARKERS WILL FACE.

ALL LOTS ARE 2 GRAVE LOTS EXCEPT
 WHERE OTHERWISE NOTED.

ALL 2 GRAVE LOTS ARE 6'x9'
 ALL 3 GRAVE LOTS ARE 9'x9'

LOT SUMMARY

1239	2 GRAVE LOTS
138	3 GRAVE LOTS
1377	TOTAL LOTS

ALL SOULS CEMETERY
SOUTH PART
SECTION 16

SCALE 1"=20' G.C.A. JUNE, 1982