

NOTE: THE LOT NUMBERS ARE PLACED IN THE UPPER RIGHT HAND CORNER OF THE LOTS AS YOU FACE THE LOTS AND ARE INDICATED THUS

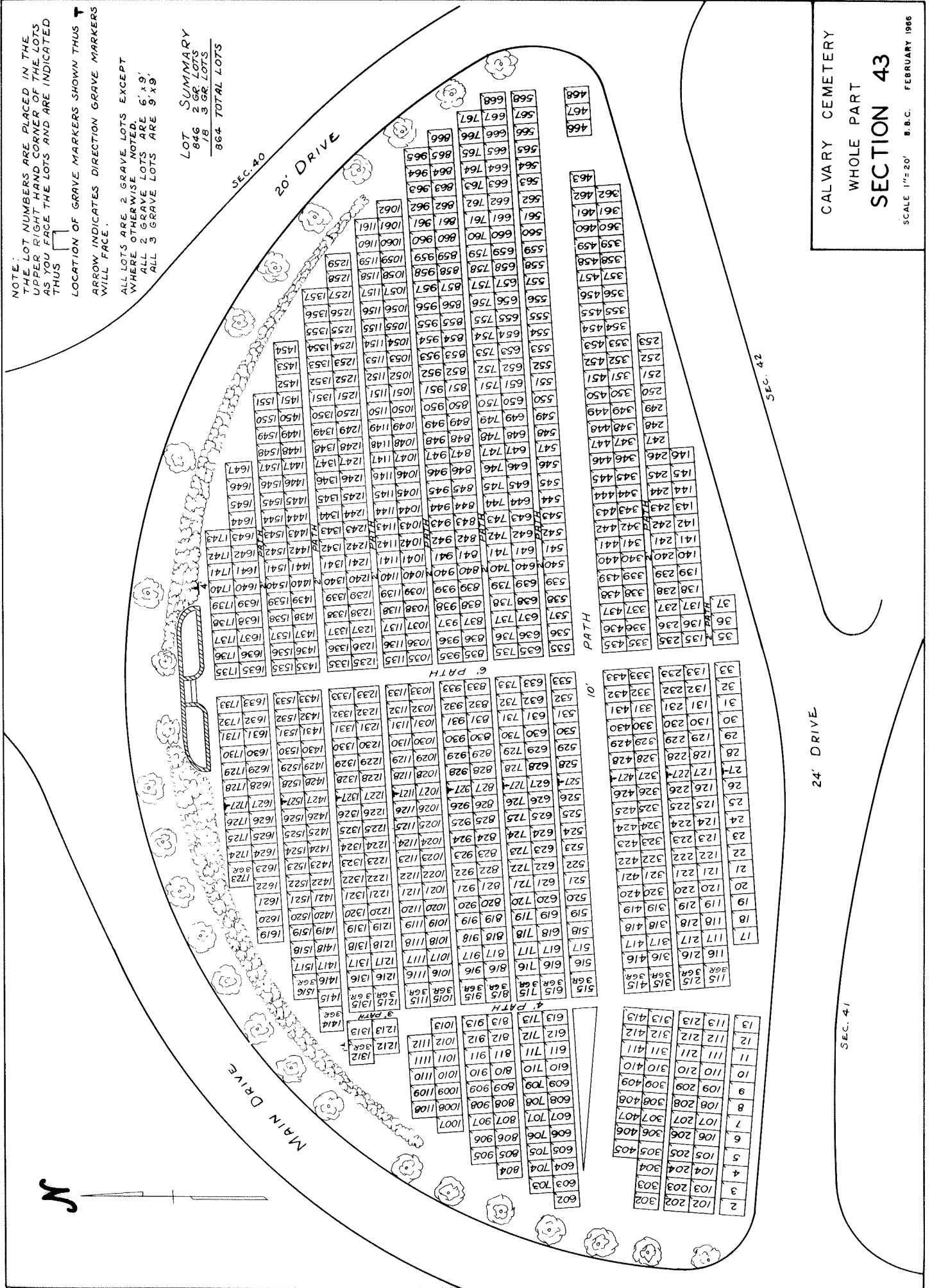
LOCATION OF GRAVE MARKERS SHOWN THUS T  
ARROW INDICATES DIRECTION GRAVE MARKERS WILL FACE.

ALL LOTS ARE 2 GRAVE LOTS EXCEPT WHERE OTHERWISE NOTED.  
ALL 2 GRAVE LOTS ARE 6' x 9'  
ALL 3 GRAVE LOTS ARE 9' x 9'

LOT SUMMARY  
846 2 GR. LOTS  
18 3 GR. LOTS  
864 TOTAL LOTS

CALVARY CEMETERY  
WHOLE PART  
SECTION 43

SCALE 1"=20' B.B.C. FEBRUARY 1966



SEC. 40

20' DRIVE

MAIN DRIVE

SEC. 42

24' DRIVE

SEC. 41

6' PATH

10' PATH

PATH

