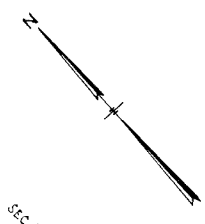


Sec 84



THE LOT NUMBERS IS PLACED IN THE UPPER RIGHT HAND CORNER OF EACH LOT AND THE FACE THE LOTS AND IS INDICATED THUS [arrow symbol]

LOCATION OF GRAVE MARKERS SHOWN THUS [arrow symbol]

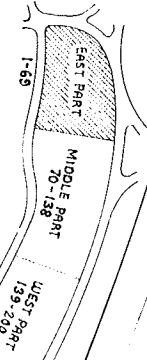
ARROW INDICATES DIRECTION GRAVE MARKERS WILL FACE.

ALL LOTS ARE 2 GRAVE LOTS EXCEPT WHERE OTHERWISE NOTED

ALL 2 GRAVE LOTS ARE 6'x9'

ALL 3 GRAVE LOTS ARE 5'x9'

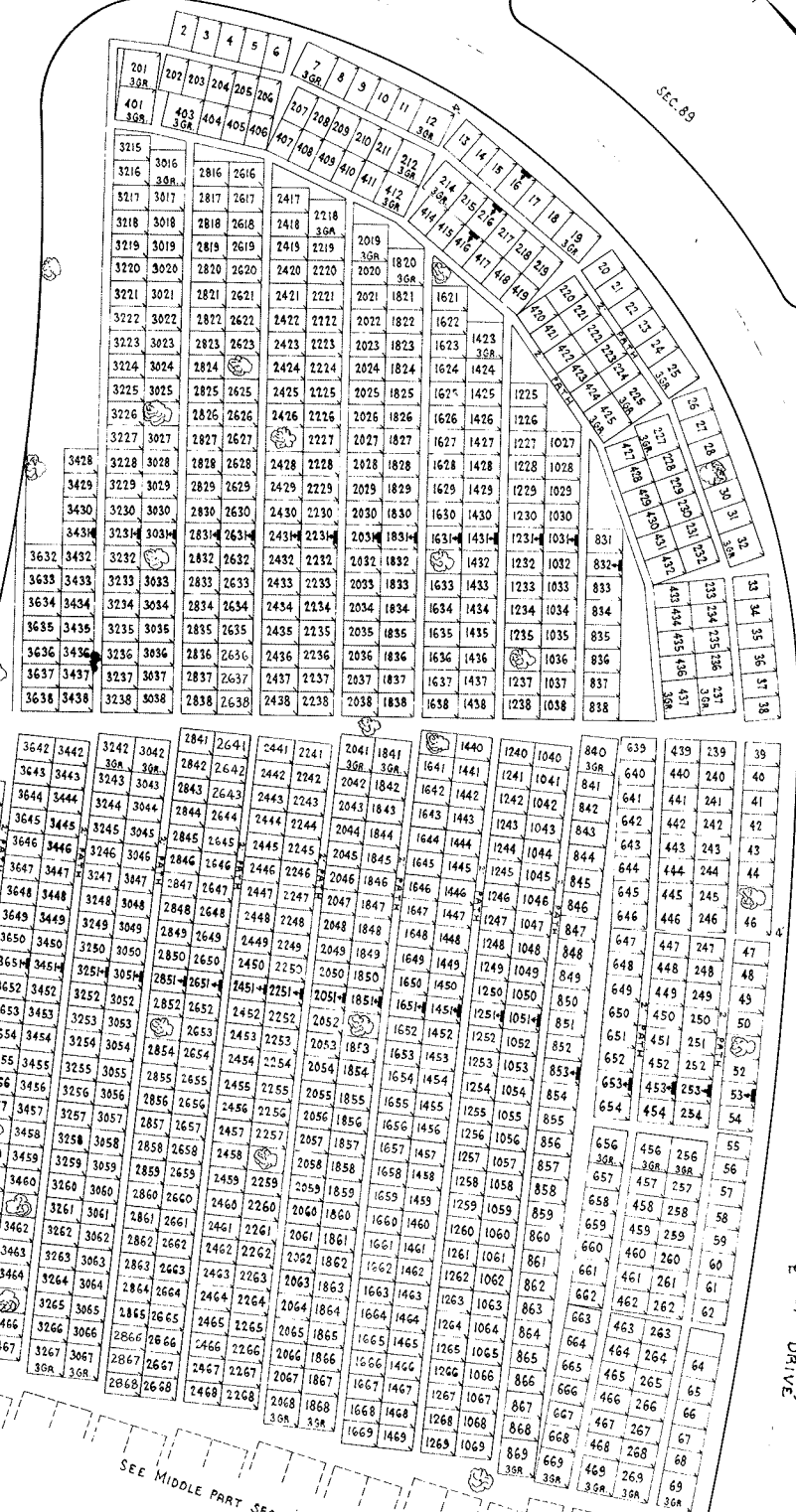
KEY MAP OF ENTIRE SECTION



CALVARY CEMETERY
EAST PART OF
SECTION 90
SCALE 1"=20'
E.J.M.
MAY 25, 1953

903 - 2GR.
40 - 3GR.
943 TOTAL LOTS

SEE MIDDLE PART SEC 90

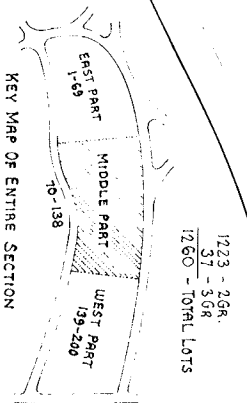


90
EAST PART

SEE EAST PART SEE 90

SEC. 100

SEC. 111



1223 - 26R
37 - 30R
1260 - 101RL LOTS

24' DRIVE
(LOWER)

24' DRIVE
(UPPER)

THE LOT NUMBER IS PLACED IN THE UPPER RIGHT HAND CORNER OF LOTS AS YOU FACE THE LOTS AND IS INDICATED THUS [arrow pointing right]

LOCATION OF GRAVE MARKERS SHOWN THUS [arrow pointing right]

ARROW INDICATES DIRECTION GRAVE MARKERS WILL FACE

ALL LOTS ARE 2 GRAVE LOTS EXCEPT WHERE OTHERWISE NOTED

ALL 2 GRAVE LOTS ARE 6'x9'

ALL 3 GRAVE LOTS ARE 9'x9'

SEC. 81

SEC. 90

CALVARY CEMETERY
MIDDLE PART OF
SECTION 90
SCALE 1"=20'
E.J.M.
MAY 25, 1953

SEE WEST PART SEC 90

