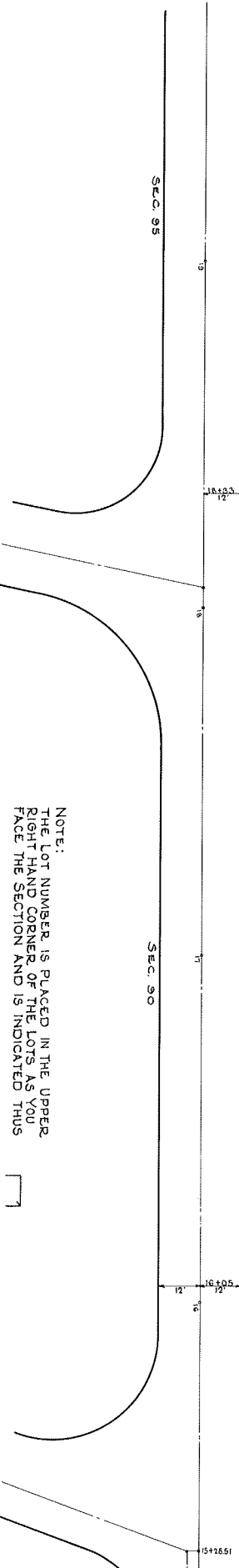


NICKEL PLATE RAILROAD

CALVARY CEMETERY PROPERTY LINE

624	623	622	621	620	619	618	617	616	615	614	613	612	611	610	609	608	607	606
524	523	522	521	520	519	518	517	516	515	514	513	512	511	510	509	508	507	506
424	423	422	421	420	419	418	417	416	415	414	413	412	411	410	409	408	407	406
324	323	322	321	320	319	318	317	316	315	314	313	312	311	310	309	308	307	306
224	223	222	221	220	219	218	217	216	215	214	213	212	211	210	209	208	207	206
124	123	122	121	120	119	118	117	116	115	114	113	112	111	110	109	108	107	106
24	23	22	21	20	19	18	17	16	15	14	13	12	11	10	9	8	7	6

RESERVED FOR FUTURE ROAD



NOTE:  
 THE LOT NUMBER IS PLACED IN THE UPPER  
 RIGHT HAND CORNER OF THE LOTS AS YOU  
 FACE THE SECTION AND IS INDICATED THUS  
 LOCATION OF GRAVE MARKERS SHOWN THUS  
 ARROW INDICATES DIRECTION GRAVE MARKERS  
 WILL FACE.

NOTE:  
 ALL LOTS ARE SOLD AS NOT CONSECRATED  
 SINGLE GRAVES ONLY,  
 ALL LOTS ARE 4 GRAVE LOTS, 12'x9'

CALVARY CEMETERY  
 CLEVELAND, OHIO  
 WEST-PART  
**SECTION 99**  
 G.C.A.  
 SCALE 1"=30'  
 DEC. 1955