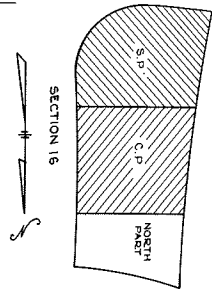


Survey Mar. 2000 N
11600 E

CENTRAL PART SEC. 16



Lot 1 to 539
Lot 4002 to 4053
Lot 4260A to 4284

THE LOT NUMBER IS FOUND IN THE UPPER
RIGHT HAND CORNER OF LOTS AS YOU FACE THE
SECTION AND ARE INDICATED THUS []

LOCATION OF GRAVE MARKERS SHOWN THUS []
ARROW INDICATES DIRECTION GRAVE MARKERS
WILL FACE.

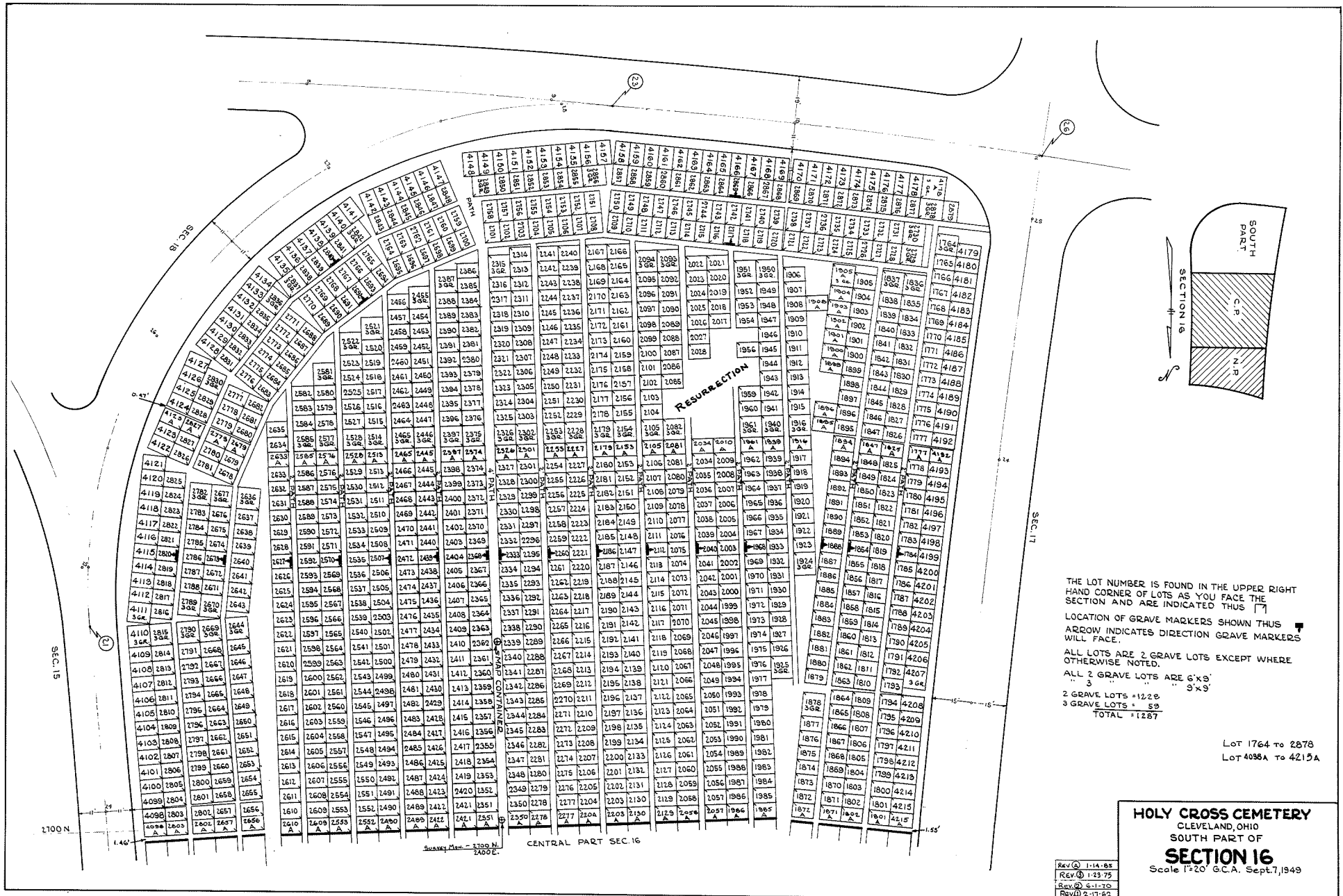
ALL LOTS ARE 2 GRAVE LOTS EXCEPT WHERE
OTHERWISE NOTED.

ALL 2 GRAVE LOTS ARE 6'x9'
3 GRAVE LOTS ARE 5'x9'

2 GRAVE LOTS = 598
3 GRAVE LOTS = 40
TOTAL = 638

HOLY CROSS CEMETERY
CLEVELAND, OHIO
NORTH PART OF
SECTION 16
Scale 1"=20' G.C.A. Sept. 14, 1949

REV. 1-14-49
REV. 2-3-75
REV. 2-17-62



THE LOT NUMBER IS FOUND IN THE UPPER RIGHT HAND CORNER OF LOTS AS YOU FACE THE SECTION AND ARE INDICATED THUS []

LOCATION OF GRAVE MARKERS SHOWN THIS WAY
ARROW INDICATES DIRECTION GRAVE MARKERS WILL FACE.

ALL LOTS ARE 2 GRAVE LOTS EXCEPT WHERE OTHERWISE NOTED.

ALL 2 GRAVE LOTS ARE 6'X8'
3 GRAVE LOTS ARE 5'X9'

TOTAL = 1287

Lot 1764 to 2878
Lot 4038A to 4215A

HOLY CROSS CEMETERY
CLEVELAND, OHIO
SOUTH PART OF
SECTION 16
Scale 1"=20' G.C.A., Sept. 7, 1949

Rev. 1-14-85
Rev. 1-23-75
Rev. 5-11-70
Rev. 2-17-62