

NOTE:  
THE LOT NUMBER IS PLACED IN THE UPPER  
RIGHT HAND CORNER OF LOTS AS YOU FACE  
THE LOT AND IS INDICATED THUS

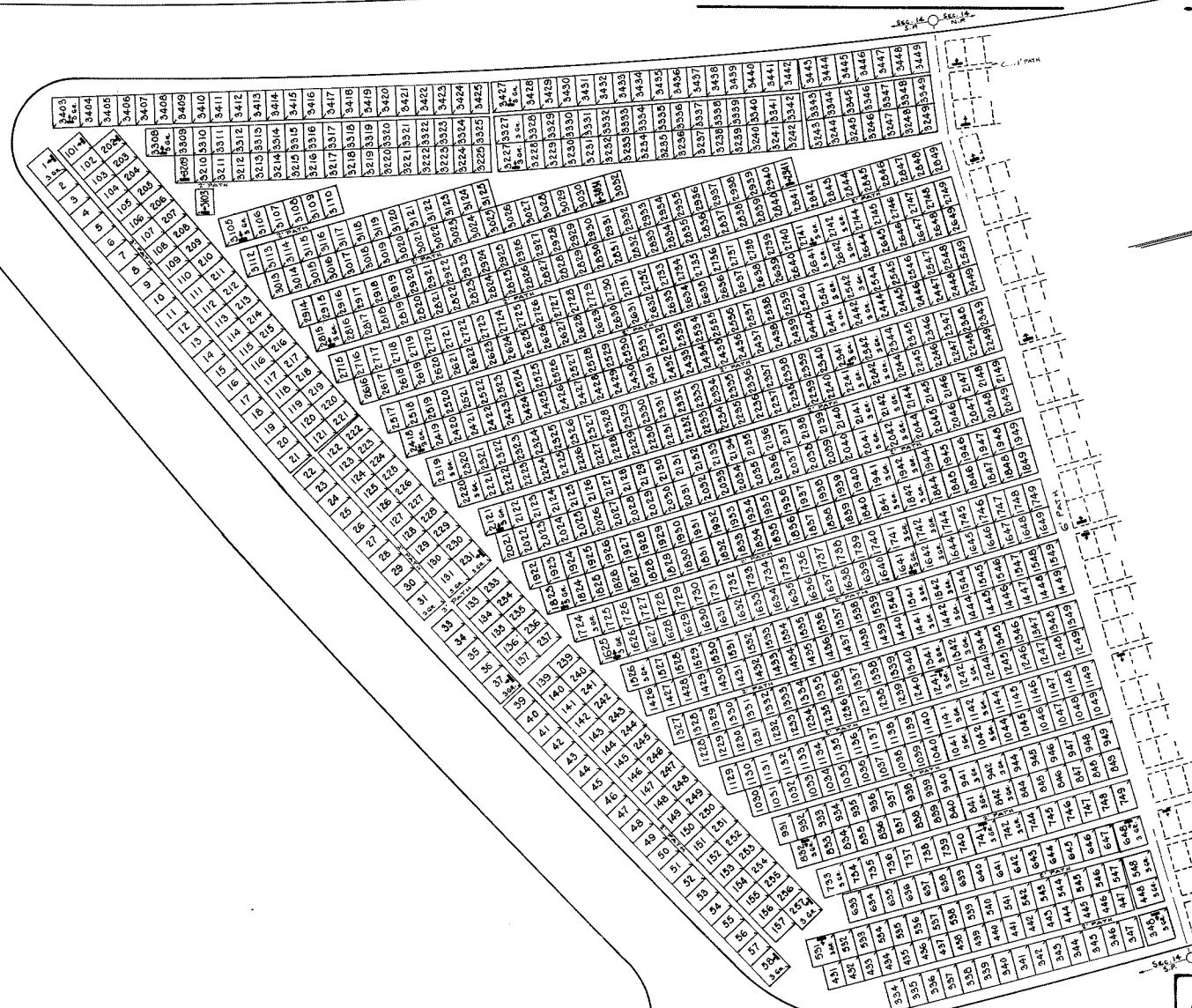
LOCATION OF GR. MARKER SHOWN THUS  
ARROW INDICATES DIRECTION GRAVE  
MARKERS WILL FACE.

ALL LOTS ARE 2 GRAVE LOTS EXCEPT  
WHERE OTHERWISE NOTED.

ALL 2 GR. LOTS ARE 6' X 9'  
ALL 3 GR. LOTS ARE 9' X 9'

LOT SUMMARY  
1240 2 GR. LOTS  
54 3 GR. LOTS  
1294 TOTAL LOTS

ALL SOULS CEMETERY  
NORTH PART  
SECTION 14  
SCALE: 1" = 20'  
T.H. JULY 30, 1975



NOTE:  
THE LOT NUMBER IS PLACED IN THE UPPER  
RIGHT HAND CORNER OF LOTS AS YOU FACE  
THE LOT AND IS INDICATED THUS

LOCATION OF GR. MARKER SHOWN THUS  
ARROW INDICATES DIRECTION GRAVE  
MARKERS WILL FACE.

ALL LOTS ARE 2 GRAVE LOTS EXCEPT  
WHERE OTHERWISE NOTED.

ALL 2 GR. LOTS ARE 6' X 9'  
ALL 3 GR. LOTS ARE 9' X 9'

LOT SUMMARY  
924 2 GR. LOTS  
68 3 GR. LOTS  
992 TOTAL LOTS

ALL SOULS CEMETERY  
SOUTH PART  
SECTION 14  
SCALE: 1" = 20' T.H. JULY 30, 1975