

NOTE:
 THE LOT NUMBER IS PLACED IN THE UPPER RIGHT HAND CORNER OF LOTS AS YOU FACE THE LOTS AND IS INDICATED
 LOCATION OF GRAVE MARKERS SHOWN T
 ARROW INDICATES DIRECTION GRAVE MARKERS WILL FACE.

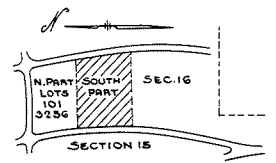
ALL LOTS ARE 2 GRAVE LOTS EXCEPT WHERE OTHERWISE NOTED.

ALL 2 GRAVE LOTS ARE 6'x3'
 ALL 3 GRAVE LOTS ARE 5'x3'

LOT SUMMARY
 1161 2 GRAVE LOTS
 170 3 GRAVE LOTS
 1331 TOTAL LOTS

ALL SOULS CEMETERY
 SOUTH PART
SECTION 15

SCALE 1" = 20'
 REV. 2-1969 G. C. A. MAY, 1958



NOTE:
 THE LOT NUMBER IS PLACED IN THE UPPER
 RIGHT HAND CORNER OF LOTS AS YOU FACE
 THE LOTS AND IS INDICATED THUS []

LOCATION OF GRAVE MARKERS SHOWN THUS []
 ARROW INDICATES DIRECTION GRAVE MARKERS
 WILL FACE.

ALL LOTS ARE 2 GRAVE LOTS EXCEPT WHERE
 OTHERWISE NOTED.

ALL 2 GRAVE LOTS ARE 6'x5'
 ALL 3 GRAVE LOTS ARE 9'x5'

LOT SUMMARY
 883 2 GRAVE LOTS
 163 3 GRAVE LOTS
 1046 TOTAL LOTS

ALL SOULS CEMETERY
 NORTH PART
SECTION 15
 SCALE 1" = 20' G.C.A. MAY, 1958