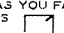


NOTE:  
 THE LOT NUMBER IS PLACED IN THE UPPER  
 RIGHT HAND CORNER OF LOTS AS YOU FACE  
 THE LOT AND IS INDICATED THUS 

MONUMENT LOTS ARE DENOTED BY A NUMBER  
 FOLLOWED BY A LETTER. ALL OTHER LOTS ARE  
 REGULAR LOTS.

ALL LOTS ARE 2 GRAVE LOTS EXCEPT  
 WHERE OTHERWISE NOTED.  
 ALL 2 GRAVE LOTS ARE 6' X 9'  
 ALL 3 GRAVE LOTS ARE 9' X 9'

LOT SUMMARY:  
 66 2 GRAVE LOTS (FLUSH MARKERS)  
 6 3 GRAVE LOTS (FLUSH MARKERS)  
 36 2 GRAVE MONUMENT LOTS  
 10 3 GRAVE MONUMENT LOTS  
 118 TOTAL LOTS

THE FOLLOWING LIST OF LOTS WILL HAVE  
 MONUMENT SIZES AS LISTED.  
 1409A - 1413A 6 FOOT  
 1420A - 1424A 6 FOOT  
 1209A - 1213A 6 FOOT  
 1220A - 1224A 6 FOOT  
 1009A - 1011A 6 FOOT  
 1022A - 1024A 6 FOOT  
 809A - 813A 6 FOOT  
 820A - 824A 6 FOOT  
 509A - 513A 4 FOOT  
 520A - 524A 4 FOOT

### HOLY CROSS CEMETERY

CLEVELAND, OHIO

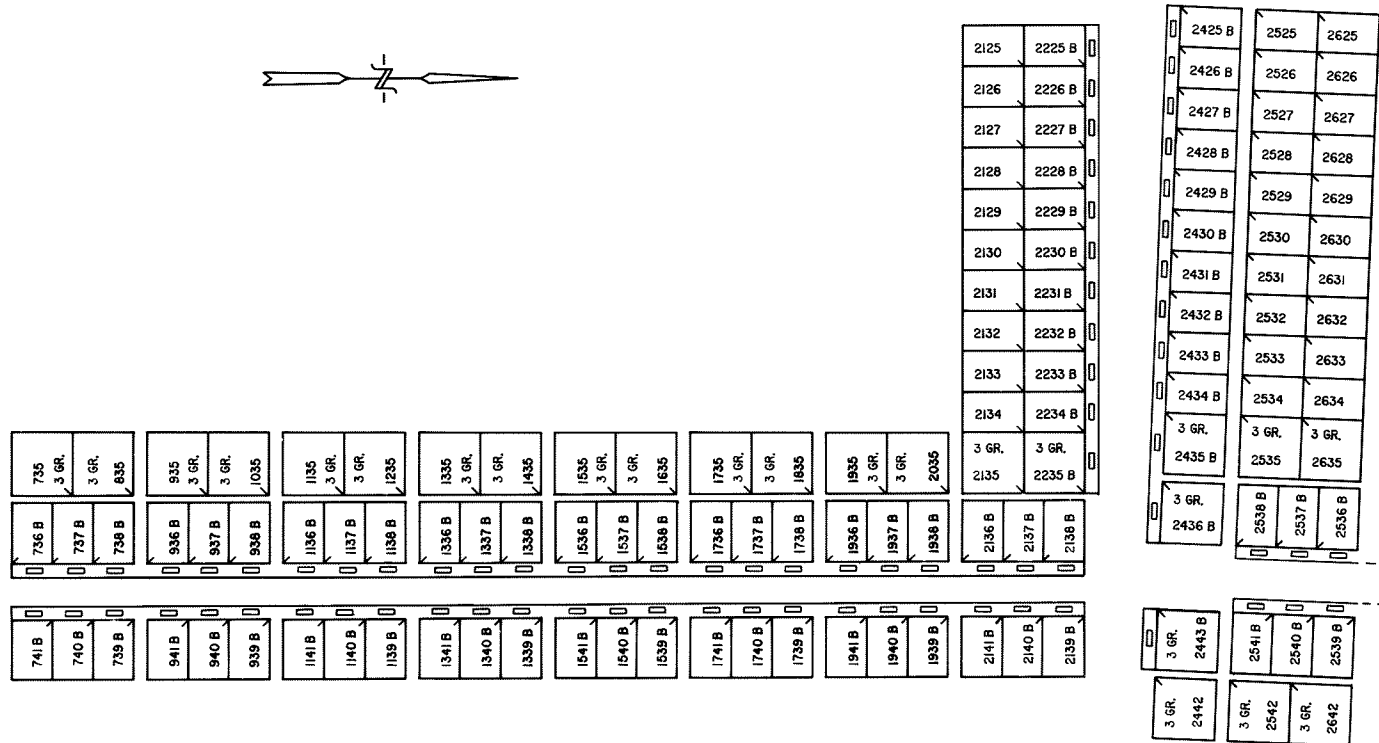
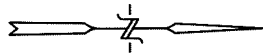
WEST PART

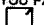
SECTION 30

SCALE: 1" = 10'

J.G.

DATE: MAY 24, 1993



NOTE:  
 THE LOT NUMBER IS PLACED IN THE UPPER  
 RIGHT HAND CORNER OF LOTS AS YOU FACE  
 THE LOT AND IS INDICATED THUS   
 MONUMENT LOTS ARE DENOTED BY A NUMBER  
 FOLLOWED BY A LETTER. ALL OTHER LOTS ARE  
 REGULAR LOTS.

ALL LOTS ARE 2 GRAVE LOTS EXCEPT  
 WHERE OTHERWISE NOTED.  
 ALL 2 GRAVE LOTS ARE 6' X 9'  
 ALL 3 GRAVE LOTS ARE 9' X 9'

LOT SUMMARY:  
 30 2 GRAVE LOTS (FLUSH MARKERS)  
 20 3 GRAVE LOTS (FLUSH MARKERS)  
 68 2 GRAVE MONUMENT LOTS  
 7 3 GRAVE MONUMENT LOTS  
 138 TOTAL LOTS

THE FOLLOWING LIST OF LOTS WILL HAVE  
 MONUMENT SIZES AS LISTED.  
 64" - 72" MONUMENTS  
 2136B - 2141B; 2235B - 2235B  
 2433B - 2436B; 2443B  
 2536B - 2541B

54" - 60" MONUMENTS  
 1736B - 1741B; 1936B - 1941B  
 2230B - 2232B; 2430B - 2432B

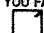
44" - 50" MONUMENTS  
 1136B - 1141B; 1336B - 1341B  
 1530B - 1541B; 2228B - 2229B  
 2428B - 2429B

36" - 42" MONUMENTS  
 736B - 741B; 936B - 941B  
 2225B - 2227B; 2425B - 2427B

**HOLY CROSS CEMETERY**  
 CLEVELAND, OHIO  
**WEST PART**  
**SECTION 30**

SCALE: 1" = 10'      I.G.      DATE: OCT. 29, 1993

3674	3673	3672	3671	3670	3669	3668	3667	3666	3665	3664	3663	3662	3661	3660	3659	3658	3657	3656	3655	3654	3653	3652	3651	3650	3649	3648	3647	3646	3645	3644	3643	
3574 C	3573 C	3572 C	3571 C	3570 C	3569 C	3568 C	3567 C	3566 C	3565 C	3564 C	3563 C	3562	3561	3560	3559	3558	3557	3556	3555	3554 C	3553 C	3552 C	3551 C	3550 C	3549 C	3548 C	3547 C	3546 C	3545 C	3544 C	3543 C	
SHRUB BED																	3458	3457	3456	3455	3454	3453	3452	3451	3450	3449	3448	3447	3446	3445	3444	3443
3274	3273	3272	3271	3270	3269	3268	3267	3266	3265	3264	3263	3262	3261	3260	3259	3258	3257	3256	3255	3254 C	3253 C	3252 C	3251 C	3250 C	3249 C	3248 C	3247 C	3246 C	3245 C	3244 C	3243 C	
3174 C	3173 C	3172 C	3171 C	3170 C	3169 C	3168 C	3167 C	3166 C	3165 C	3164 C	3163 C	3162	3161	3160	3159	3158	3157	3156	3155	3154 C	3153 C	3152 C	3151 C	3150 C	3149 C	3148 C	3147 C	3146 C	3145 C	3144 C	3143 C	
SHRUB BED																	3058	3057	3056	3055	3054	3053	3052	3051	3050	3049	3048	3047	3046	3045	3044	3043
2974	2973	2972	2971	2970	2969	2968	2967	2966	2965	2964	2963	2962	2961	2960	2959	2958	2957	2956	2955	2954	2953	2952	2951	2950	2949	2948	2947	2946	2945	2944	2943	
SHRUB BED																	2858	2857	2856	2855	2854	2853	2852	2851	2850	2849	2848	2847	2846	2845	2844	2843
2874	2873	2872	2871	2870	2869	2868	2867	2866	2865	2864	2863	2862	2861	2860	2859	2858	2857	2856	2855	2854	2853	2852	2851	2850	2849	2848	2847	2846	2845	2844	2843	
2774	2773	2772	2771	2770	2769	2768	2767	2766	2765	2764	2763	2762	2761	2760	2759	2758	2757	2756	2755	2754	2753	2752	2751	2750	2749	2748	2747	2746	2745	2744	2743	
2674	2673	2672	2671	2670	2669	2668	2667	2666	2665	2664	2663	2662	2661	2660	2659	2658	2657	2656	2655	2654	2653	2652	2651	2650	2649	2648	2647	2646	2645	2644	2643	
2574	2573	2572	2571	2570	2569	2568	2567	2566	2565	2564	2563	2562	2561	2560	2559	2558	2557	2556	2555	2554	2553	2552	2551	2550	2549	2548	2547	2546	2545	2544	2543	
2474	2473	2472	2471	2470	2469	2468	2467	2466	2465	2464	2463	2462	2461	2460	2459	2458	2457	2456	2455	2454	2453	2452	2451	2450	2449	2448	2447	2446	2445	2444	2443	
2260	2268	2257																														

NOTE:  
 THE LOT NUMBER IS PLACED IN THE UPPER  
 RIGHT HAND CORNER OF LOTS AS YOU FACE  
 THE LOT AND IS INDICATED THUS 

MONUMENT LOTS ARE DENOTED BY A NUMBER  
 FOLLOWED BY A LETTER. ALL OTHER LOTS ARE  
 REGULAR LOTS.

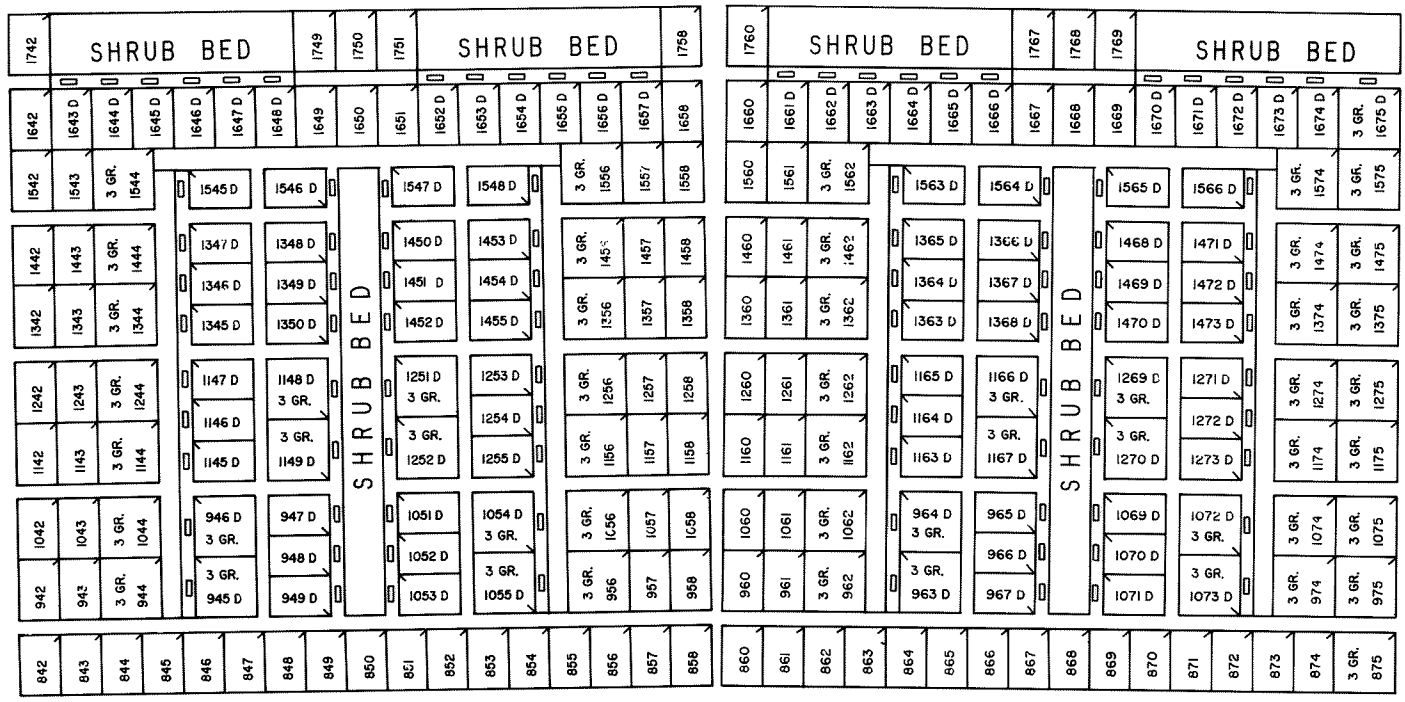
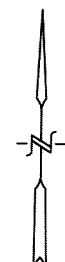
ALL LOTS ARE 2 GRAVE LOTS EXCEPT  
 WHERE OTHERWISE NOTED.  
 ALL 2 GRAVE LOTS ARE 6' X 8'  
 ALL 3 GRAVE LOTS ARE 9' X 9'

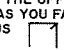
LOT SUMMARY:  
 48 2 GRAVE LOTS (FLUSH MARKERS)  
 9 3 GRAVE LOTS (FLUSH MARKERS)  
 302 2 GRAVE MONUMENT LOTS  
 0 3 GRAVE MONUMENT LOTS  
 359 TOTAL LOTS

THE FOLLOWING LIST OF LOTS WILL HAVE  
 MONUMENT SIZES AS LISTED.  
 44" - 50" MONUMENTS  
 3143C - 3154C, 3163C - 3174C  
 36" - 42" MONUMENTS  
 3563C - 3574C, 3543C - 3554C

**HOLY CROSS CEMETERY**  
 CLEVELAND, OHIO  
 CENTRAL PART  
 SECTION 30

SCALE: 1" = 10'      J.G.      DATE: MAY 24, 1993



NOTE:  
 THE LOT NUMBER IS PLACED IN THE UPPER  
 RIGHT HAND CORNER OF LOTS AS YOU FACE  
 THE LOT AND IS INDICATED THUS 

MONUMENT LOTS ARE DENOTED BY A NUMBER  
 FOLLOWED BY A LETTER. ALL OTHER LOTS ARE  
 REGULAR LOTS.

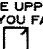
ALL LOTS ARE 2 GRAVE LOTS EXCEPT  
 WHERE OTHERWISE NOTED.  
 ALL 2 GRAVE LOTS ARE 6' X 9'  
 ALL 3 GRAVE LOTS ARE 9' X 9'

LOT SUMMARY:  
 92 2 GRAVE LOTS (FLUSH MARKERS)  
 36 3 GRAVE LOTS (FLUSH MARKERS)  
 79 2 GRAVE MONUMENT LOTS  
 17 3 GRAVE MONUMENT LOTS  
 224 TOTAL LOTS

THE FOLLOWING LIST OF LOTS WILL HAVE  
 MONUMENT SIZES AS LISTED.  
 54" - 60" MONUMENTS  
 1643D - 1648D; 1652D - 1657D  
 1661D - 1666D; 1670D - 1675D

36" - 42" MONUMENTS	44" - 50" MONUMENTS
945D - 946D; 963D - 964D	947D - 949D; 965D - 967D
1055D - 1054D; 1072D - 1073D	1051D - 1053D; 1069D - 1071D
1145D - 1147D; 1163D - 1165D	1148D - 1149D; 1168D - 1167D
1253D - 1255D; 1271D - 1273D	1251D - 1252D; 1269D - 1270D
1345D - 1347D; 1363D - 1365D	1348D - 1350D; 1366D - 1368D
1453D - 1455D; 1471D - 1473D	1450D - 1452D; 1468D - 1470D
1545D - 1548D; 1563D - 1566D	1546D - 1547D; 1564D - 1565D

**HOLY CROSS CEMETERY**  
 CLEVELAND, OHIO  
 CENTRAL PART  
 SECTION 30  
 SCALE: 1" = 10' J.G. DATE: OCT. 27, 1993

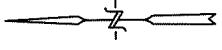
NOTE:  
 THE LOT NUMBER IS PLACED IN THE UPPER  
 RIGHT HAND CORNER OF LOTS, AS YOU FACE  
 THE LOT AND IS INDICATED THUS 

MONUMENT LOTS ARE DENOTED BY A NUMBER  
 FOLLOWED BY A LETTER. ALL OTHER LOTS ARE  
 REGULAR LOTS.

ALL LOTS ARE 2 GRAVE LOTS EXCEPT  
 WHERE OTHERWISE NOTED.  
 ALL 2 GRAVE LOTS ARE 6' X 9'  
 ALL 3 GRAVE LOTS ARE 9' X 9'

LOT SUMMARY:  
 37 2 GRAVE LOTS (FLUSH MARKERS)  
 37 3 GRAVE LOTS (FLUSH MARKERS)  
 51 2 GRAVE MONUMENT LOTS  
 7 3 GRAVE MONUMENT LOTS  
 132 TOTAL LOTS

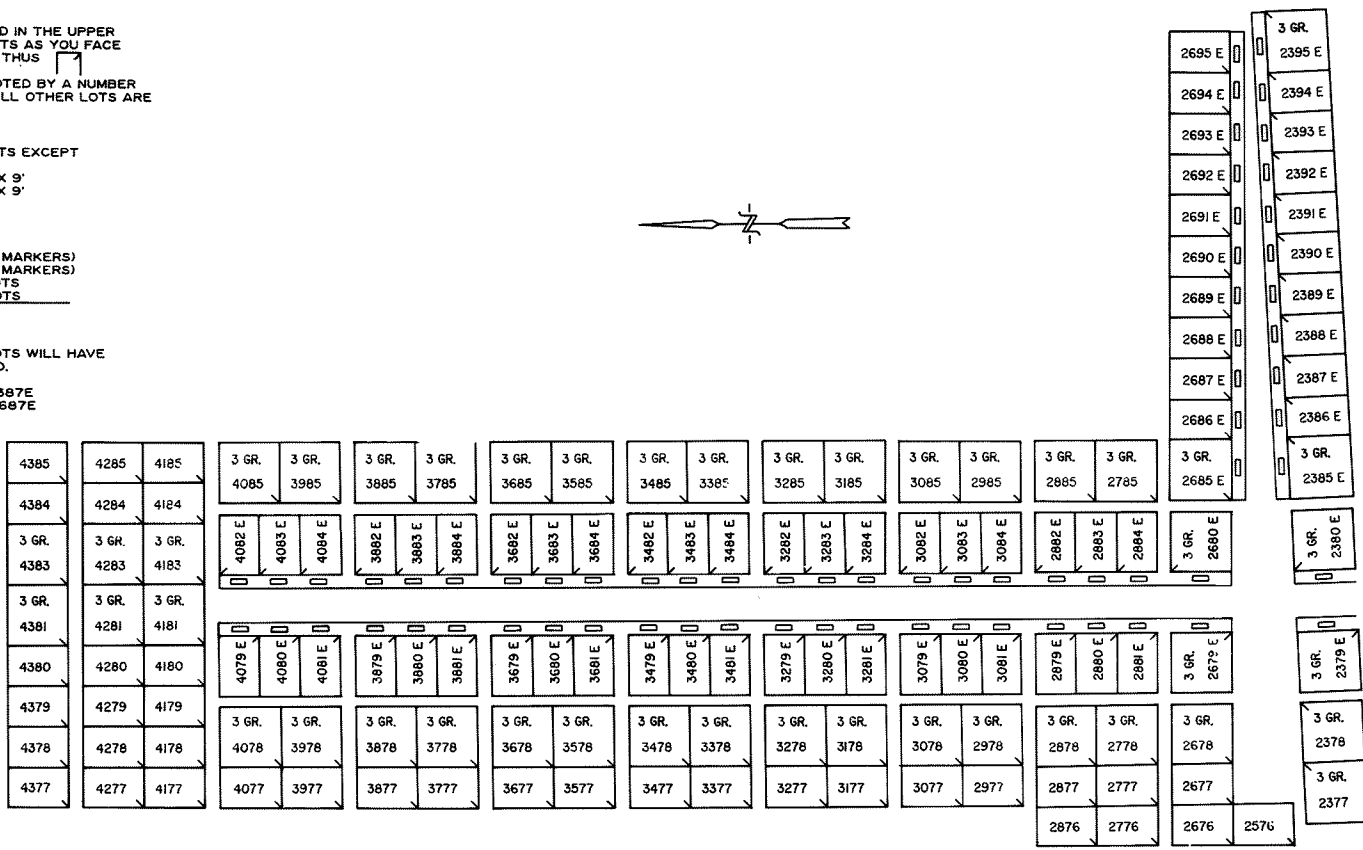
THE FOLLOWING LIST OF LOTS WILL HAVE  
 MONUMENT SIZES AS LISTED.  
 64" - 72" MONUMENTS  
 2379E - 2380E; 2385E - 2387E  
 2679E - 2680E; 2685E - 2687E



54" - 60" MONUMENTS  
 2388E - 2390E; 2688E - 2690E  
 2879E - 2884E; 3079E - 3084E


44" - 50" MONUMENTS  
 3279E - 3284E; 3479E - 3484E  
 3679E - 3684E

36" - 42" MONUMENTS  
 3879E - 3884E; 4079E - 4084E



**HOLY CROSS CEMETERY**  
 CLEVELAND, OHIO  
 EAST PART  
 SECTION 30

SCALE: 1" = 10'      J.G.      DATE: OCT. 29, 1993

NOTE:  
THE LOT NUMBER IS PLACED IN THE UPPER  
RIGHT HAND CORNER OF LOTS AS YOU FACE  
THE LOT AND IS INDICATED THUS 

MONUMENT LOTS ARE DENOTED BY A NUMBER  
FOLLOWED BY A LETTER. ALL OTHER LOTS ARE  
REGULAR LOTS.

ALL LOTS ARE 2 GRAVE LOTS EXCEPT  
WHERE OTHERWISE NOTED.  
ALL 2 GRAVE LOTS ARE 6' X 9'  
ALL 3 GRAVE LOTS ARE 9' X 9'

LOT SUMMARY:  
31 2 GRAVE LOTS (FLUSH MARKERS)  
55 3 GRAVE LOTS (FLUSH MARKERS)  
73 2 GRAVE MONUMENT LOTS  
7 3 GRAVE MONUMENT LOTS  
**166 TOTAL LOTS**

THE FOLLOWING LIST OF LOTS WILL HAVE  
MONUMENT SIZES AS LISTED.

**64" - 72" MONUMENTS**

1979E - 1984E; 2179E - 2184E  
2379E - 2380E; 2389E - 2392E  
2679E - 2680E; 2689E - 2692E

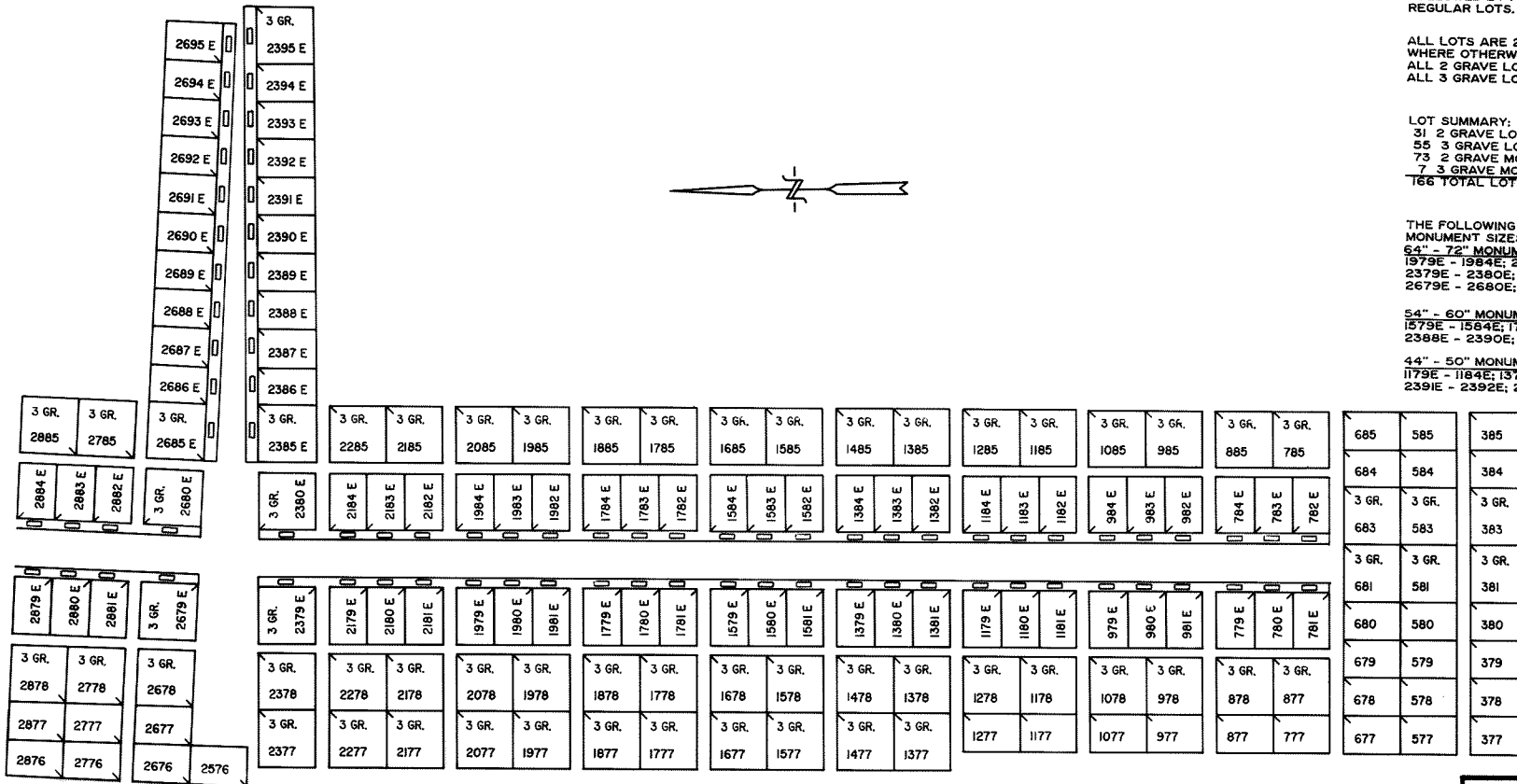
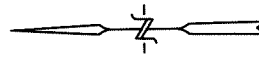
**54" - 60" MONUMENTS**

1579E - 1584E; 1779E - 1784E  
2388E - 2390E; 2688E - 2690E

**44" - 50" MONUMENTS**

1179E - 1184E; 1379E - 1384E  
2391E - 2392E; 2691E - 2692E

**36" - 42" MONUMENTS**  
779E - 784E; 979E - 984E  
2393E - 2395E; 2693E - 2695E



**HOLY CROSS CEMETERY**

CLEVELAND, OHIO

**EAST PART  
SECTION 30**

SCALE: 1" = 10' J.G. DATE: OCT. 29, 1993

DWG. 30- E