

THE LOT NUMBER IS FOUND IN THE UPPER RIGHT HAND CORNER OF LOTS AS YOU FACE THE SECTION AND IS INDICATED THUS 177

LOCATION OF GRAVE MARKERS SHOWN THUS ARROW INDICATES DIRECTION GRAVE MARKERS WILL FACE.

ALL LOTS ARE 2 GRAVE LOTS EXCEPT WHERE OTHERWISE NOTED.

ALL 2 GRAVE LOTS ARE 6'x9'

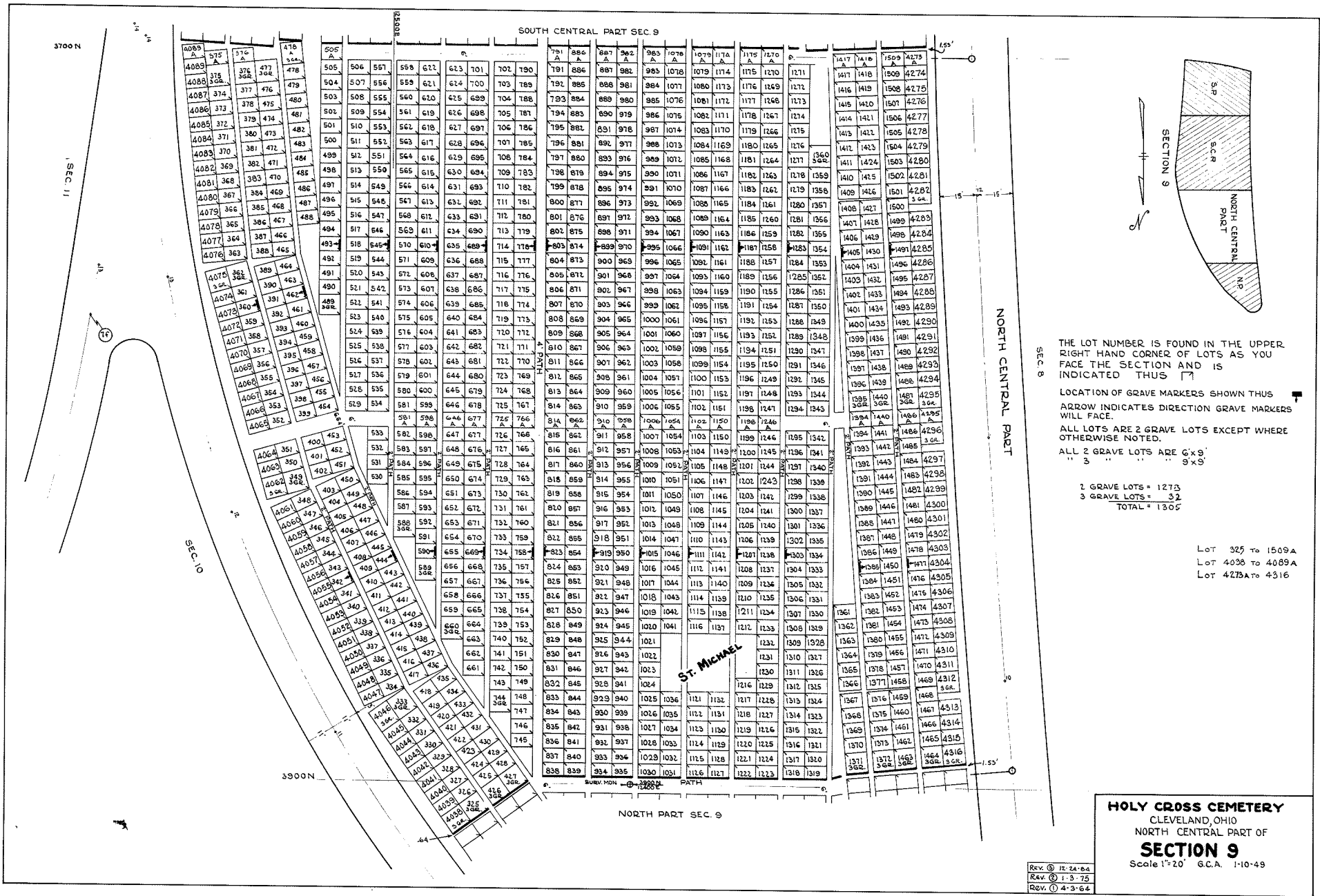
3 GRAVE LOTS ARE 9'x9'

2 GRAVE LOTS = 348  
 3 GRAVE LOTS = 30  
 TOTAL = 378

Lot 1 to 324A  
 Lot 3999 to 4037A  
 Lot 4316A to 4346

**HOLY CROSS CEMETERY**  
 CLEVELAND, OHIO  
 NORTH PART OF  
**SECTION 9**  
 Scale 1"=20' G.C.A. 1-7-49

REV. ① 12-24-88  
 REV. ② 1-3-75  
 REV. ③ 4-3-64



THE LOT NUMBER IS FOUND IN THE UPPER  
RIGHT HAND CORNER OF LOTS AS YOU  
FACE THE SECTION AND IS  
INDICATED THUS [Symbol]

LOCATION OF GRAVE MARKERS SHOWN THUS [Symbol]  
ARROW INDICATES DIRECTION GRAVE MARKERS  
WILL FACE.

ALL LOTS ARE 2 GRAVE LOTS EXCEPT WHERE  
OTHERWISE NOTED.

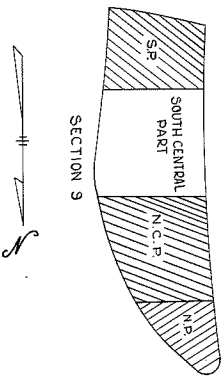
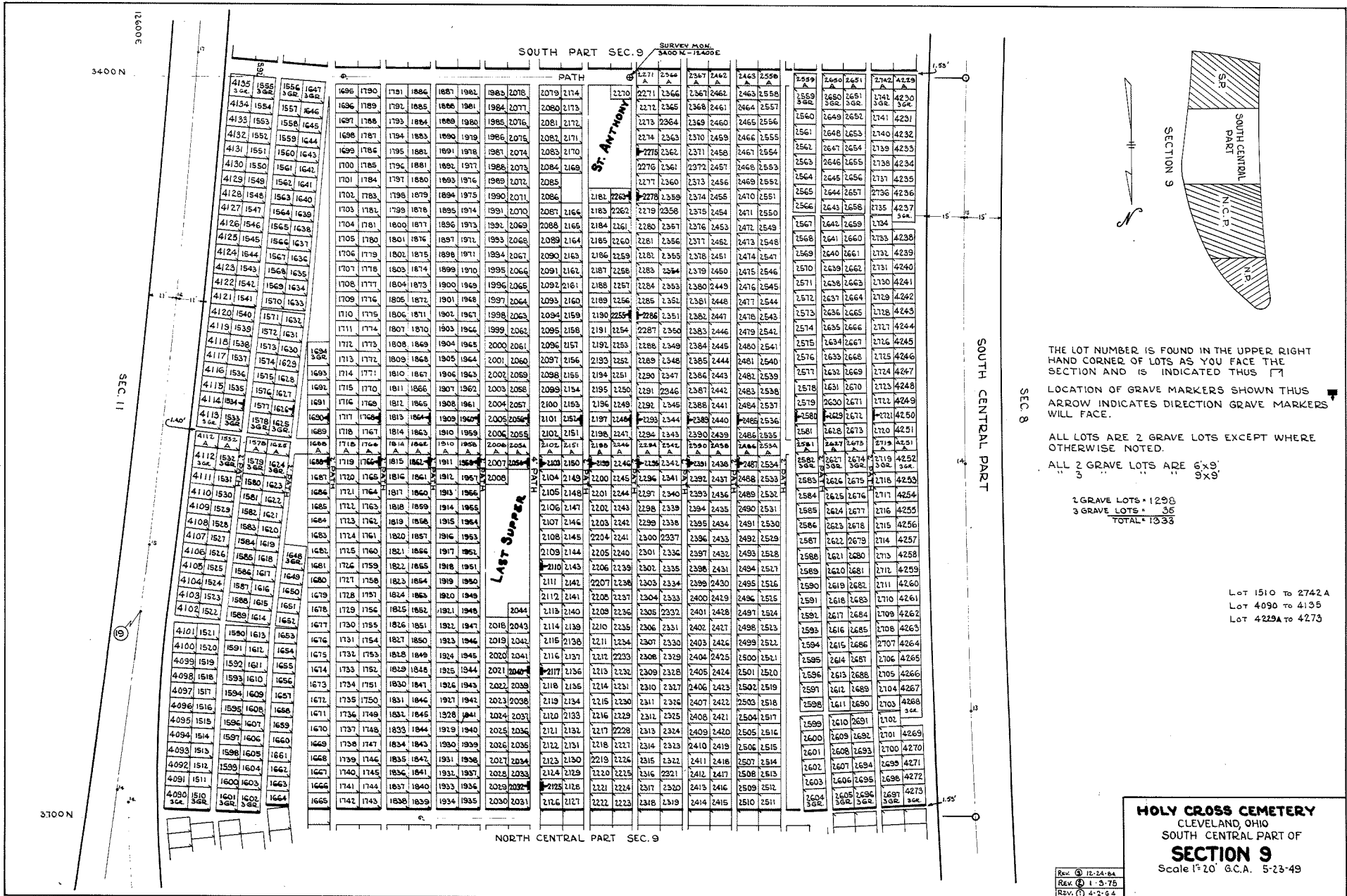
ALL 2 GRAVE LOTS ARE 6' X 9'  
3 GRAVE LOTS ARE 3' X 9'

2 GRAVE LOTS = 1273  
3 GRAVE LOTS = 32  
TOTAL = 1305

Lot 325 to 1509 A  
Lot 4028 to 4089 A  
Lot 4273A to 4316

**HOLY CROSS CEMETERY**  
CLEVELAND, OHIO  
NORTH CENTRAL PART OF  
**SECTION 9**  
Scale 1"=20' G.C.A. 1-10-49

REV. ① 12-24-64  
REV. ② 1-3-75  
REV. ③ 4-3-64



THE LOT NUMBER IS FOUND IN THE UPPER RIGHT HAND CORNER OF LOTS AS YOU FACE THE SECTION AND IS INDICATED THUS 171

LOCATION OF GRAVE MARKERS SHOWN THUS ARROW INDICATES DIRECTION GRAVE MARKERS WILL FACE.

ALL LOTS ARE 2 GRAVE LOTS EXCEPT WHERE OTHERWISE NOTED.

ALL 2 GRAVE LOTS ARE 6'x9' 9'x9'

2 GRAVE LOTS = 1296  
 3 GRAVE LOTS = 36  
 TOTAL = 1332

LOT 1510 TO 2742 A  
 LOT 4090 TO 4135  
 LOT 4229A TO 4273

**HOLY CROSS CEMETERY**  
 CLEVELAND, OHIO  
 SOUTH CENTRAL PART OF  
**SECTION 9**  
 Scale 1" = 20' G.C.A. 5-23-49

Rev. 12-24-84  
 Rev. 1-3-75  
 Rev. 2-2-64

